

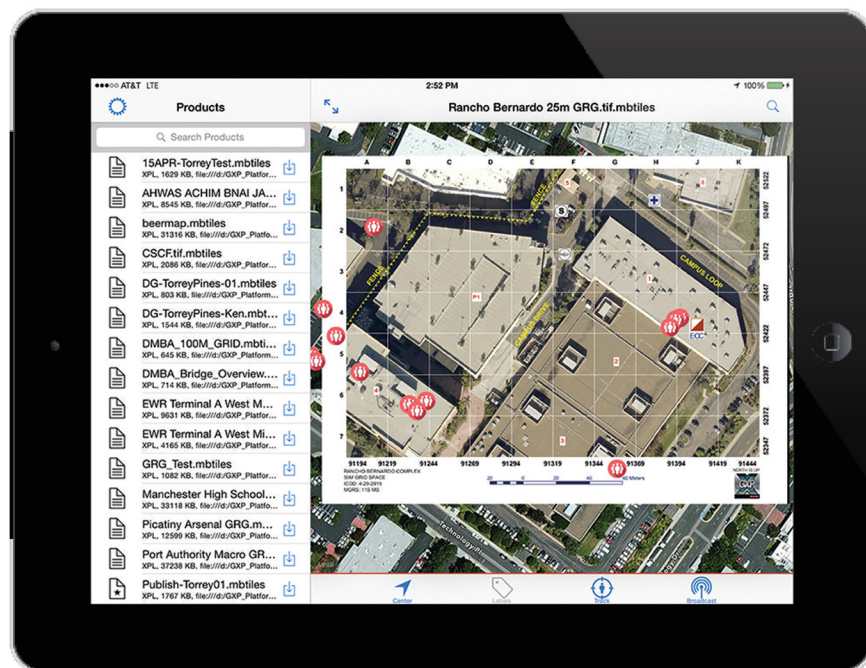
GXP ONSCENE

**TACTICAL, REAL-TIME COMMAND
AND CONTROL TO FIRST RESPONDERS
IN THE FIELD.**



QUICKLY CREATE AND DISSEMINATE A COMMON OPERATING PICTURE.

The GXP OnScene mobile application allows incident command and responders in the field to work from a common operating picture for maximum efficiency and shared geospatial awareness at the scene of an event or crisis.



Leveraging the power of the GXP Platform and the advanced image exploitation capabilities of SOCET GXP®, GXP OnScene displays a tactical, customizable Grid Reference Graphic (GRG) overlay on top of up-to-date, personalized maps for ease-of-communication and enhanced interoperability. The location of personnel is displayed on the map using device GPS, providing responders with situational awareness and allowing the command center to coordinate and direct personnel in real-time.

GXP OnScene also works directly with SOCET GXP to create reports and products with integrated geospatial reference for use during investigations and for post-incident reports. Products can be stored in the GXP Xplorer® catalog and shared or used for further analysis.

WITH GXP ONSCENE YOU CAN:

Plan and prepare for an event or crisis

Report from or recreate a scene

Create a unified command post where multiple agencies collaborate and share responsibility of the incident

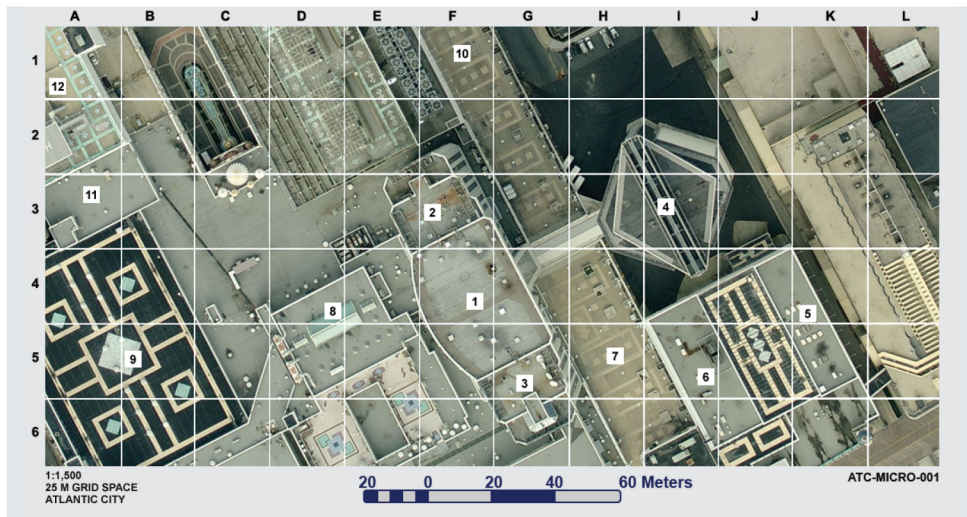
Enable communication between ground personnel and aerial support to report back to the unified command post

Provide direction for personnel on scene

Locate personnel as situations evolve

Coordinate mobile responders via GRG

Share maps and location data in real-time



LEAVE NO STONE UNTURNED GRID REFERENCE GRAPHIC

Create a common operating picture that allows responders to systematically cover a large geographic area and clearly communicate actions on the ground back to the command center. Use the SOCET GXP Grid Reference Graphic (GRG) tool to overlay a grid on aerial imagery and quickly snapshot the GRG to a distributable report. Using this shared situational awareness ensures search and rescue operation teams have the information they need to confirm that no area goes unsearched.

In this GRG report, numbered markers indicate sites and structures that fall within the search area. These markers can be used to coordinate relief efforts among several responders or units.



SEE THE BIG PICTURE CHANGE DETECTION

Identify and assess damages caused by flooding, landslides, earthquakes, and fire. The advanced image processing algorithms within SOCET GXP make detecting change in an area fast and easy. Import and overlay before and after imagery to automatically detect areas of change. Highlight, measure, and store areas of interest (AOI) to save time when repeatedly performing analysis on the same area.

SOCET GXP makes comparing changes in old vs. new imagery simple. In this report on a gas explosion, the extent of the damage can easily be assessed through a side-by-side comparison of the imagery.

Imagery credits: (1) Copyright EagleView Technologies, Inc. Used with permission. (2, 3) Based on data available from the U.S. Geological Survey.



TO LEARN HOW GXP® PRODUCTS CAN MINIMIZE THE COST AND ENHANCE THE EFFECTIVENESS OF YOUR MISSION, CONTACT:

Americas

Tel 800 316 9643 or 703 668 4385
Fax 703 668 4381
gxpsales@baesystems.com

Asia, Australia, and Pacific Rim

Tel +61 2 6160 4044
Fax +61 2 6160 4001
gxpsales.asia@baesystems.com

Europe, Middle East, and Africa

Tel +44 1223 370023
Fax +44 1223 370040
gxpsales.emea@baesystems.com

India

Tel +91 11 4341 2345
Fax +91 11 4341 2373
gxpsales.india@baesystems.com

© 2015 BAE Systems Inc. All rights reserved. All trademarks used are the property of their respective owners. This document gives only a general description of the product(s) or service(s) offered by BAE Systems and, except where expressly provided otherwise, shall not form part of any contract. From time to time, changes may be made in the products or conditions of supply. Approved for public release as of 10/20/2015.