



# GXP OnScene

Tactical, real-time command and control to first responders in the field

As a component of GXP OpsView™, the GXP OnScene mobile application allows incident command and responders in the field to work from a common operating picture for maximum efficiency and shared geospatial awareness at the scene of an event or crisis.

Leveraging the power of the GXP Platform™ and the advanced image exploitation capabilities of SO CET GXP®, GXP OnScene displays a tactical, customizable Collaborative Response Graphic (CRG) overlay on top of up-to-date, personalized maps for ease-of-communication and enhanced interoperability. The location of personnel is displayed on the map using device GPS, providing responders with situation awareness and allowing the command center to coordinate and direct personnel in real-time.

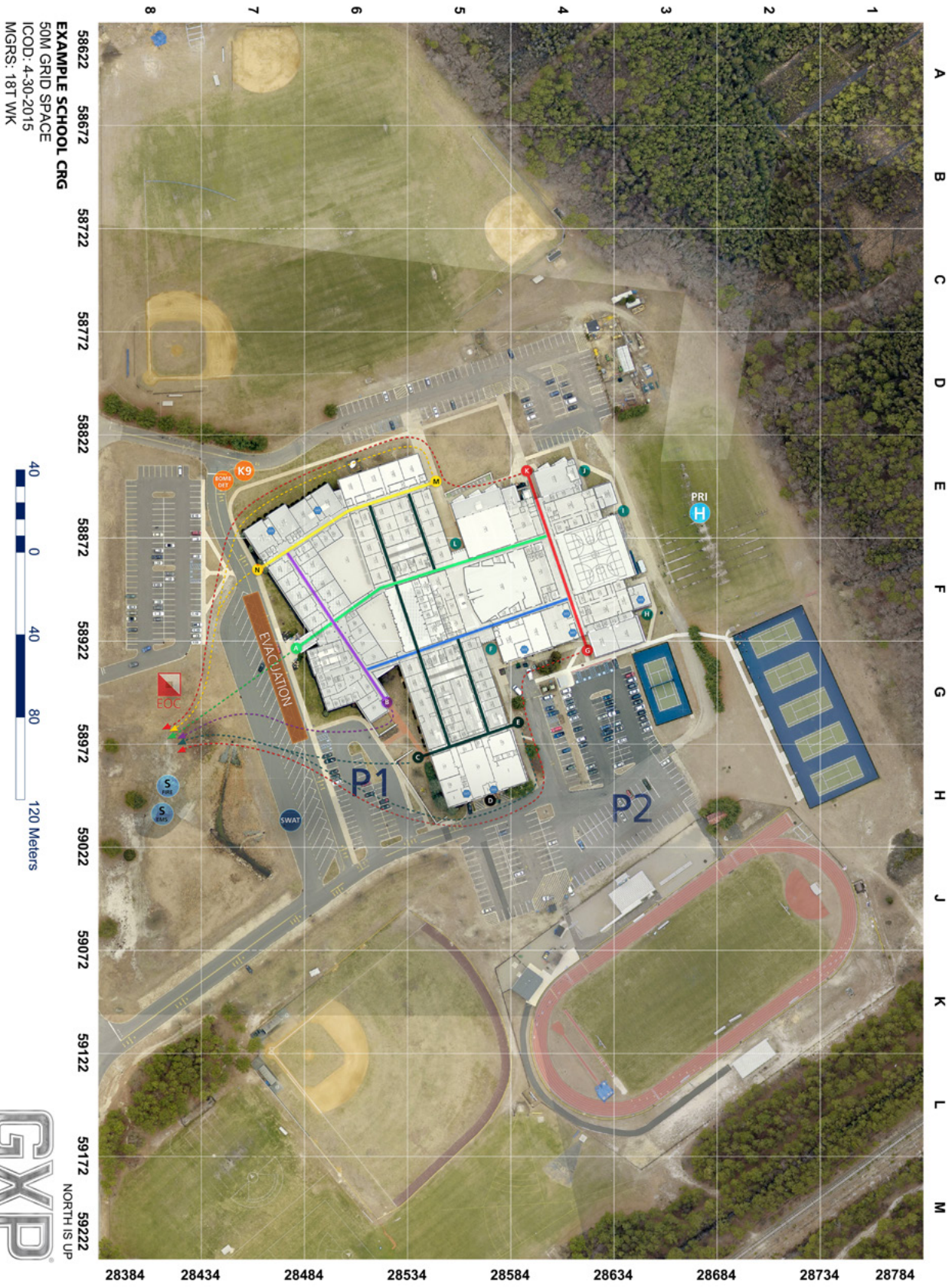
GXP OnScene also works directly with SO CET GXP to create reports and products with integrated geospatial reference for use during investigations and for post-incident reports. Products can be stored in the GXP Xplorer® catalog and shared or used for further analysis.



- » Plan and prepare for an event or crisis
- » Report from or recreate a scene
- » Create a unified command post where multiple agencies collaborate and share responsibility of the incident
- » Enable communication between ground personnel and aerial support to report back to the unified command post
- » Provide direction for personnel on scene
- » Locate personnel as situations evolve
- » Coordinate mobile responders via CRG
- » Share maps and location data in real-time

**GXP** Geospatial solutions to ensure **a safer world.**





Americas  
 Tel 800 316 9643  
 gxpsales@baesystems.com

Asia  
 Tel +603 2191 3000  
 gxpsales.asia@baesystems.com

Australia and New Zealand  
 Tel +61 2 6160 4000  
 gxpsales.apac@baesystems.com

Europe, Middle East, and Africa  
 Tel +44 1223 370 022  
 gxpsales.emea@baesystems.com