

GXP Xplorer® Disconnected

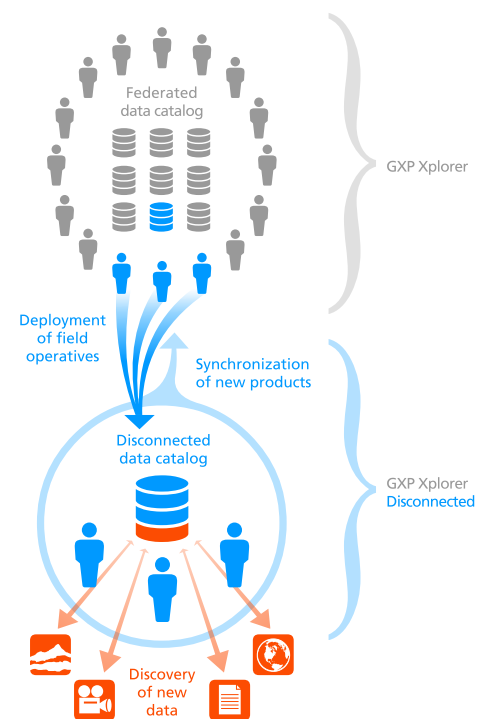
Enabling rapid deployment and discovery of mission-critical geospatial data in the field

Powered by the GXP Xplorer® Platform

Introducing GXP Xplorer® Disconnected, the most advanced solution for managing and utilizing intelligence data on deployable systems. Ideal for remote workgroups, GXP Xplorer Disconnected generates a catalog of both geospatial and non-geospatial data so you know exactly what imagery and information is available when operating in a compromised environment.

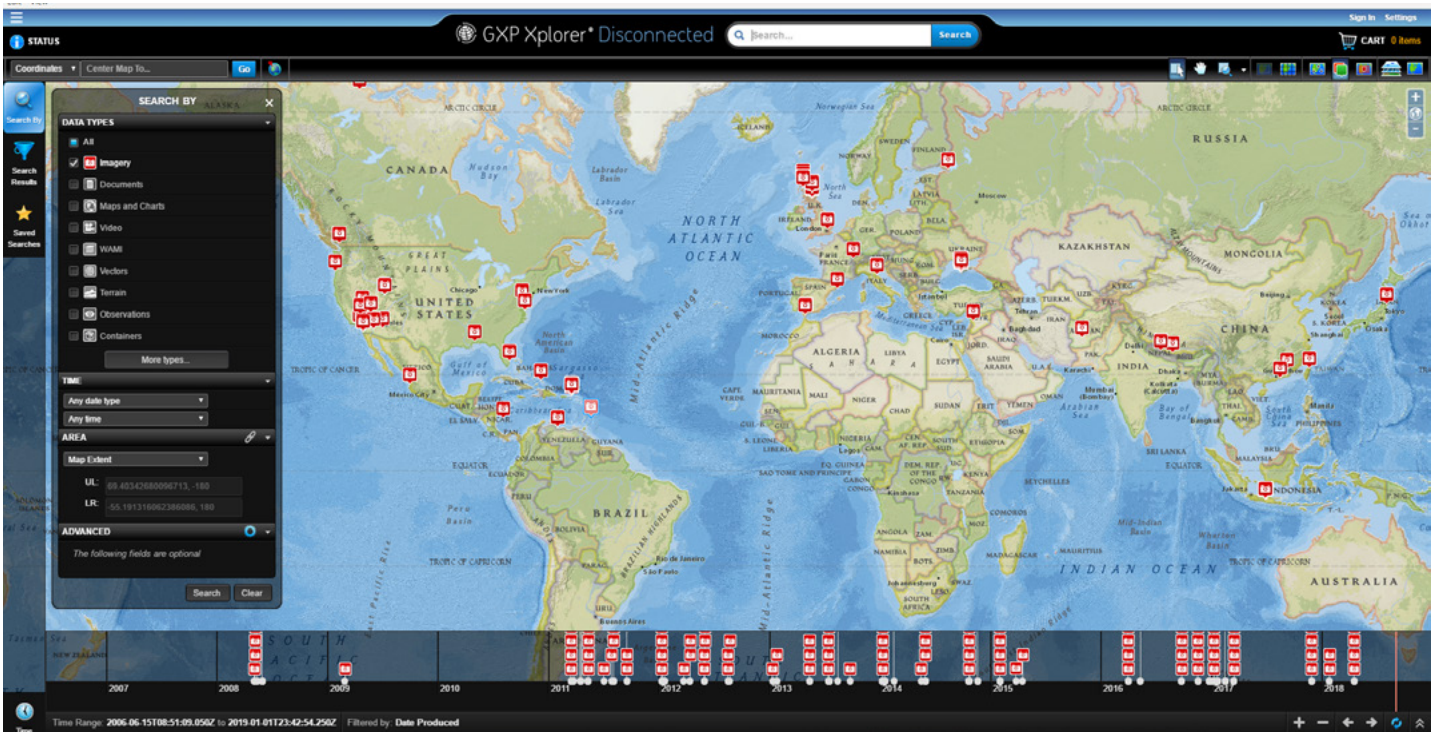
While operating with connectivity, users can continuously synchronize data from a parent GXP Xplorer to their deployable machines based on geospatial boundaries and/or other metadata fields. Users can then rapidly search, filter, and load this information while deployed, regardless of connectivity, in order to create actionable intelligence in the field. This intelligence can be shared with additional team members as all similarly deployed personnel can search and discover common data contained within the GXP Xplorer Disconnected catalog.

GXP Xplorer Disconnected functions as a desktop application with an intuitive user interface similar to GXP Xplorer. A timeline illustrates when data was collected, and searches can be performed with a variety of additional filters including sensor type, collection angle, and free text within documents and geospatial metadata. Search results can be viewed over a map background so users can see precisely what information is available over an area of interest, while a list view provides additional visibility into non-geospatially tagged information.



GXP Xplorer Disconnected enables users to search select data while deployed in the field, and upload products generated remotely once back in a connected environment.

GXP® Geospatial solutions
to ensure a safer world.

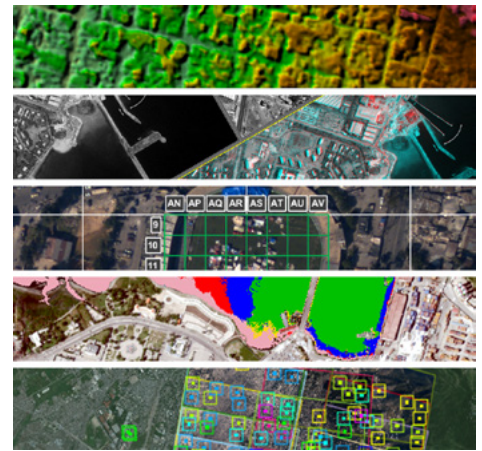


GXP Xplorer® Disconnected search results as shown on the Map View.

GXP Xplorer Disconnected allows you to deploy a small number of seats from within a larger federated system and take a select catalog of data into the field. Once the deployed team returns, any data and/or products developed in the field are incorporated back into the complete GXP Xplorer catalog.

Key Features of GXP Xplorer Disconnected

- » Catalog geospatial and other files on local drives
- » Synchronize data from an enterprise GXP Xplorer application to a deployable device
- » Upload synchronization capability for cataloging products created in the field to a GXP Xplorer instance
- » Utilize local Controlled Image Base (CIB)/Compressed ARC Digitized Raster Graphics (CADRG) data as a map background
- » Use web services for map backgrounds when connectivity is available
- » Search for and filter geospatial holdings by a wide variety of catalogued metadata
 - Sensor name
 - Temporal
 - Resolution
 - Modality
 - Free-text
- » Open discovered files in native applications
- » Share catalogs amongst small workgroups
- » Deploy with and disseminate pre-generated products such as grid reference graphics, maps of known hazards, and other derived intelligence products



Imagery courtesy of DigitalGlobe®.

GXP Xplorer Disconnected is utilized by both all-source and image analysts at organizations across the world:

- » First responders / humanitarian relief personnel in environments with limited or no connectivity
- » Deployed military units needing access to intelligence products in the field
- » Field technicians / engineers needing access to schematics and imagery to increase productivity
- » Drone operators needing a way to catalog and access historical imagery as well as newly collected data

Americas
Tel 800 316 9643
gxp.sales@baesystems.com

Asia
Tel +603 2191 3000
gxp.sales.asia@baesystems.com

Australia and New Zealand
Tel +61 2 6160 4000
gxp.sales.apac@baesystems.com

Europe, Middle East, and Africa
Tel +44 1223 370 022
gxp.sales.emea@baesystems.com