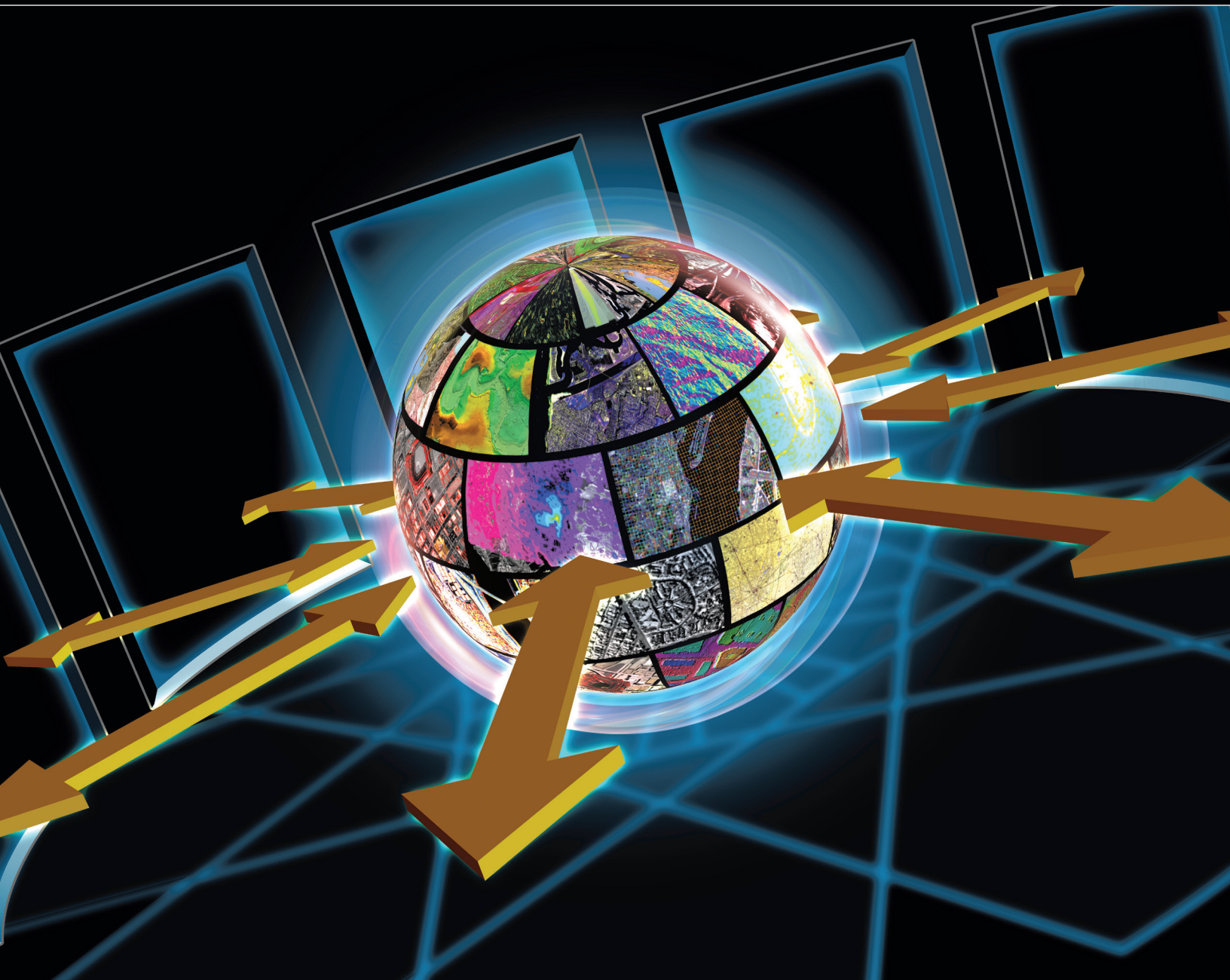


# GXP Xplorer

Take command of your data universe



**BAE SYSTEMS**



## What is GXP Xplorer?

Connect to your geospatial data — wherever it is

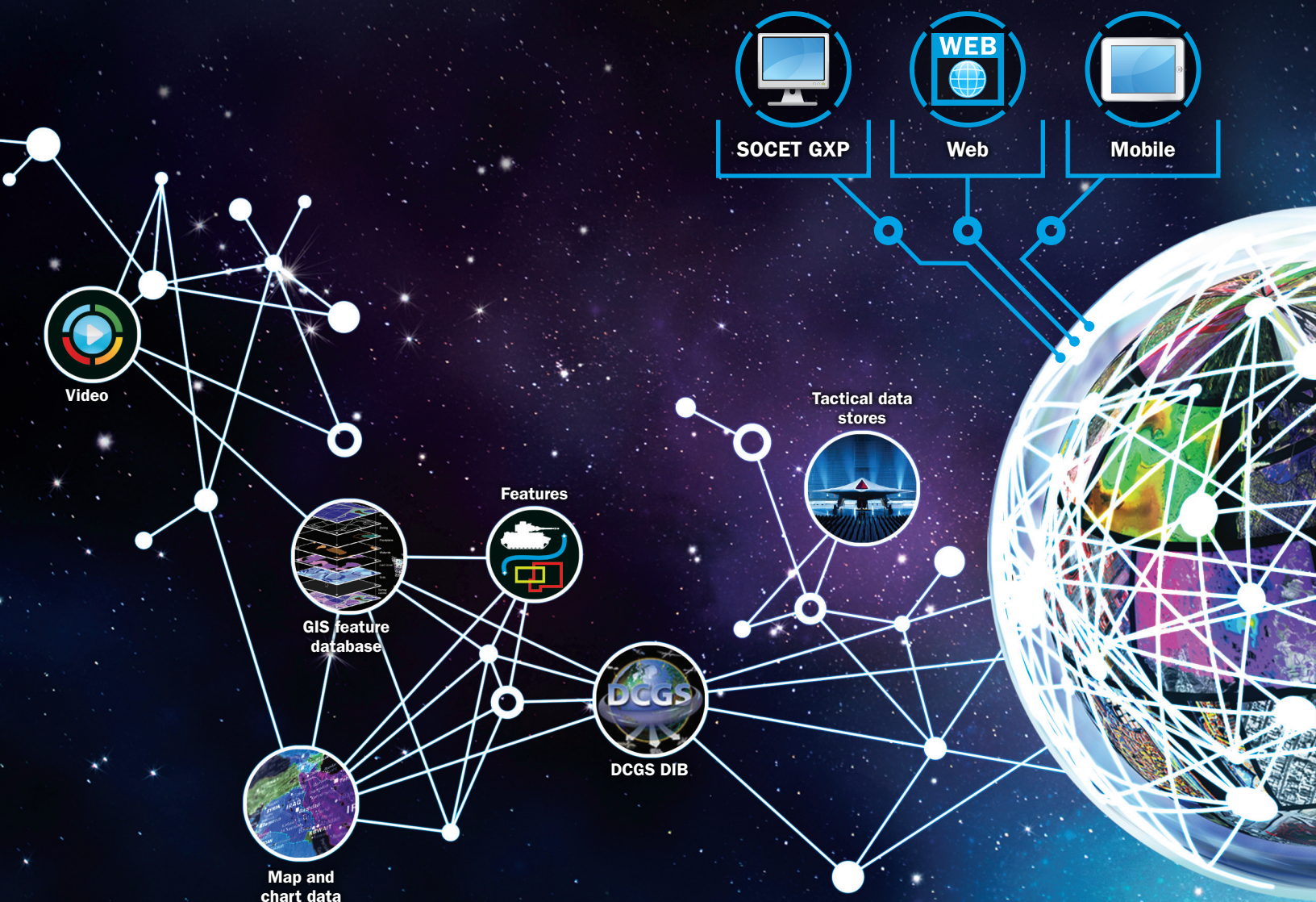
**GXP Xplorer is a revolutionary data management application that makes it easy to locate, retrieve, and share geospatial data in a workgroup and across an enterprise.**

**BAE Systems designed GXP Xplorer to provide a convenient way to access images, terrain, features, GeoPDF® images, maps, charts, reports, PowerPoint® files, videos, text documents, and numerous other data sources. With a single query, perform geospatial, temporal, free text, or advanced metadata searches without switching between multiple systems.**

Using powerful discovery techniques, the application scans for files across existing external data systems, on shared network drives, and in an analyst's local shoebox. It quickly locates files and builds an online catalog for easy retrieval.

GXP Xplorer keeps track of all available data by file type, and displays geotagged search results graphically on a map with supporting text and thumbnail images. Data can be downloaded, or opened directly into other applications.

GXP Xplorer is an open enterprise solution that scales from a mobile device, to a laptop, to an enterprise server configuration with Web browser access. It integrates with existing data stores, runs in virtual environments, and can be tailored for one or multiple users. The application supports Microsoft Windows® Server, XP, Vista, and Windows 7. Support for additional operating systems, including Oracle® Solaris x86 is planned for future versions. GXP Xplorer Mobile supports iOS and Android.





## What advantages does GXP Xplorer offer?

- Comprehensive data management — automated search, dynamic discovery, catalog, visualization, storage, and sharing
- Connects to and crawls existing data stores, such as GIS feature databases, product and national libraries, map and chart libraries, tactical datastores, and other intelligence data sources
- Social Media mash-ups monitor and geotag information from news, Web feeds, Twitter, Facebook, and blogs for a live perspective into world events
- Performs federated searches simultaneously on geographically dispersed data, and systematically stores data details in shared locations to facilitate collaboration across an enterprise
- The automated GXP Xplorer federated search capability operates from server-to-server without required customization or add-ons; federated search can be extended to external libraries and systems
- Access all enterprise data on the go with GXP Xplorer Mobile — allows for disconnected operations and easily synchronizes field collections with enterprise server holdings once the connection is restored
- Supports cataloging for multiple data types and allows new custom types to be added, such as terrain and image types, video, native vector products, and raster maps
- Allows for multiple storage locations and data stores in a catalog
- Out-of-the-box integration with legacy government data libraries
- Built-in geotagging; text inside of any data file is searchable
- Discretionary Access Controls for data separation by directory and by user groups
- Notifies users through GeoRSS and KML queries for Google Earth
- Provides a common operating picture for visualizing multiple data types



## Take command of your data universe

GXP Xplorer accesses multiple, disparate geospatial data stores and manages many data types — maps, satellite images, airborne tactical images, charts, videos, audio, handheld photos, vectors, terrain, features of interest, PowerPoint presentations, and text documents.



# Take command of your data universe

## Organize, analyze, and deliver

### Overview

The GXP Xplorer Web client was built for browser-based access from anywhere with comprehensive enterprise-wide sharing. Users can search multiple data stores simultaneously, then view, chip, and order imagery without the need for specialized software.

### Search various disparate data stores

The highly configurable architecture provides access to remote data stores and external libraries. GXP Xplorer continuously monitors file directories for new data and updates the catalog in real time. Users can add new file types on the fly, and custom data types are easily recognized for advanced search. Automatic synchronization of files and metadata between one GXP Xplorer and another ensures multiple servers in an enterprise are always up to date.

### Two ways to catalog

The GXP Xplorer catalog points to files in their current location, eliminating the need to move large amounts of data around the network; or, it automatically moves files to a user-defined location during the cataloging process. Cataloging status is tracked, including ingest failures, through the GXP Xplorer administrator Catalog Control Panel. Customized data validation rules exclude undesirable data, while the Purge Tool automatically eliminates stale data based on the configurable aging rules.

### Customizable Web access

The GXP Xplorer Web interface makes data easily available to anyone inside or outside the local network using a Web browser.

- Various map backgrounds can be used to customize the Web interface
- Markers and callout balloons display thumbnails and basic metadata information
- Developers can integrate GXP Xplorer Web services into other applications, such as SOCET GXP
- A full lock-down option to require user login provides system and data security

### Data processing and notifications

GXP Xplorer has automated features that reduce time consuming steps. Users can set up subscriptions and notifications with built-in RSS and KML query tools to receive alerts when new data is available and have it delivered directly to them via FTP. Data can be converted to selected formats during download.

The screenshot displays the GXP Xplorer Web interface. At the top is a navigation bar with 'Home', 'Product', and 'Manage' tabs. Below this is a search bar with 'Any Time' and 'By Date Collected' filters. The main area is divided into three sections: a 'Preview Panel' on the left, a 'Map Panel' in the center, and a 'Details Table' at the bottom. The 'Preview Panel' shows a thumbnail of a satellite image and its metadata. The 'Map Panel' shows a satellite map with a red bounding box and a callout balloon displaying a thumbnail and metadata. The 'Details Table' lists search results with columns for Device, Edit, Filename, Classification, File Size, Date Collected, Tags, File Type, and Order.

Device	Edit	Filename	Classification	File Size	Date Collected	Tags	File Type	Order
411 889499 12.542953		Kabu_West_WV2_MS_stereo1.tif	Unclassified	64.0 MB	2010-09-14T09:24:30.000Z	NITF2.1 NITF Image MS	image.tif2.1	Order
		Kabu_West_WV2_MS_stereo2.tif	Unclassified	144 MB	2010-09-14T09:22:50.000Z	NITF2.1 NITF Image MS	image.tif2.1	Order
		Rome_IT_WV2_MS_stereo2.tif	Unclassified	64.0 MB	2009-12-16T10:11:23.000Z	NITF2.1 NITF Image MS	image.tif2.1	Order
		Rome_IT_WV2_MS_stereo1.tif	Unclassified	64.0 MB	2009-12-16T10:12:48.000Z	NITF2.1 NITF Image MS	image.tif2.1	Order

GXP Xplorer Web interface

#### 1 MAP PANEL

Map panel displays footprints of the available data, which can be configured with Google Maps or an OGC-compliant Web Mapping Service.

#### 2 MARKERS

Geotagged search results appear as markers. Click to view additional details and download.

#### 3 PREVIEW PANEL

Preview panel tracks recently viewed results.

#### 4 DETAILS TABLE

Details table displays metadata for geotagged results and non-geotagged files such as reports, documents, and presentations.

Analysts can quickly find and share geospatial data on a local network and across an enterprise. The GXP Xplorer data library provides cataloging and search tools to build a common data environment.



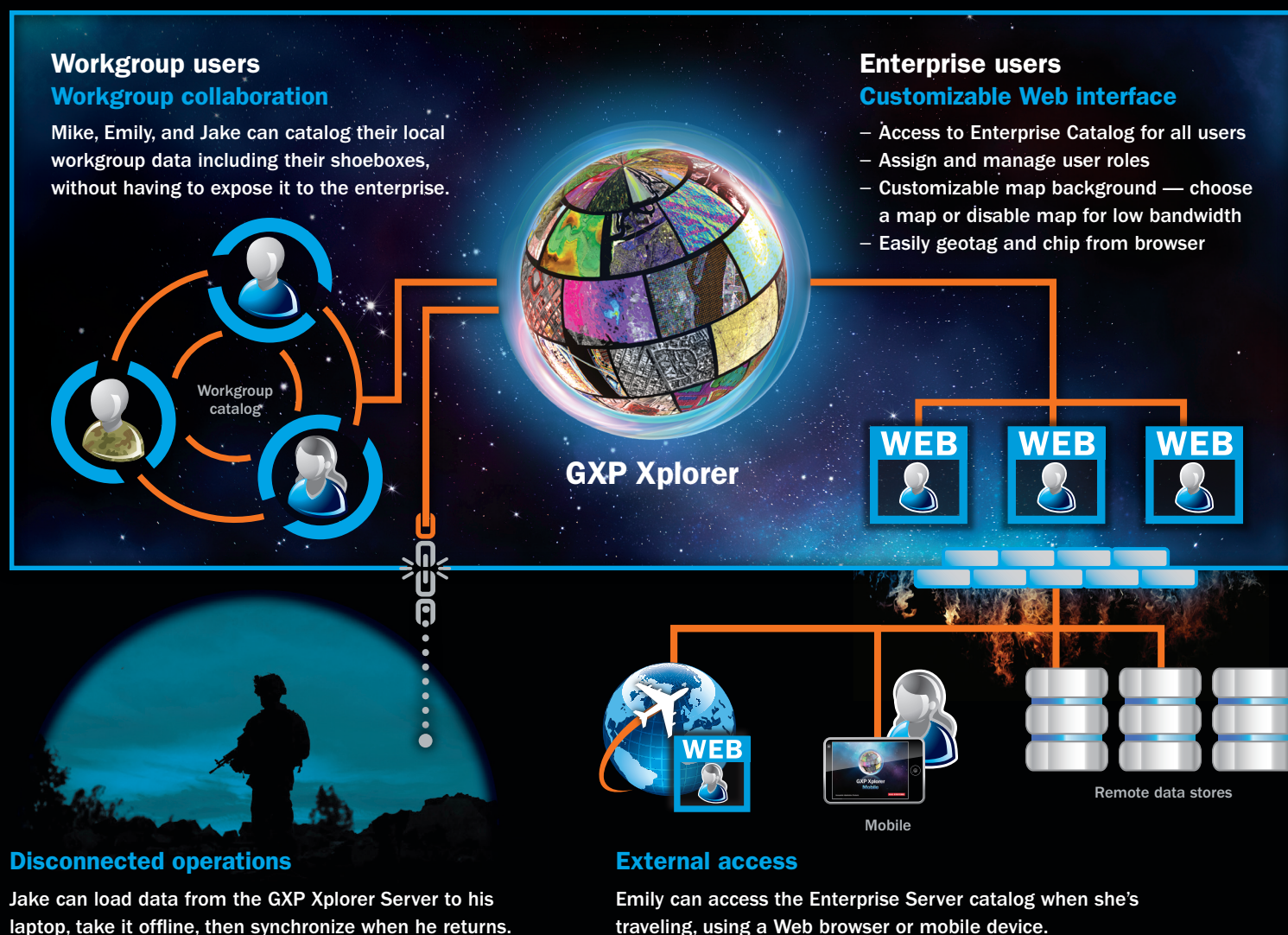
# Share data across the enterprise

Seamless access to data — no matter where the workforce resides

## Connectivity and collaboration

GXP Xplorer empowers collaboration in a variety of ways, via the Web, email, download and mobile. Email integration enables sending products as attachments or links directly to colleagues from within GXP Xplorer. Users on the go can download and take data with them, and GXP Xplorer Mobile provides remote access to enterprise data via wireless networks.

Service interfaces enable client software applications to query and retrieve from GXP Xplorer using Geospatial and Imagery Access Services (GIAS) and NATO STANAG 4559 interfaces, such as ad hoc query and standing query. GXP Xplorer also supports OGC services such as publishing a Catalog Service for the Web (CSW) and Web Coverage Service (WCS), and displaying Web Map Services (WMS).



Uses a flexible architecture composed of services, plug-ins, and XML tools to quickly add new data formats, and is easily configured to support other applications.



# GXP Xplorer Mobile

Remote data access — anytime, anywhere

## Stay connected to your enterprise

GXP Xplorer Mobile connects to any GXP Xplorer Server for downloads and uploads. Search multiple GXP Xplorer Server catalogs, image libraries, or Web news feeds simultaneously. With GXP Xplorer Mobile, it's easy to find and view data from multiple sources for real-time collaboration with your enterprise and mission partners.



### Capture and upload



- Capture images in the field using the built-in camera on the device
- Analyze images and upload to the server for sharing and collaborating with peers
- Future versions will support other data types including videos, audio files, and documents

### Download and view



- Preview images at optimized resolution for quick selection
- Define an area of interest to create a chip
- Download, view, and analyze the full resolution image chip
- Supports JPIP image streaming

### Search and discover



- Navigate the map with multi-touch pan, zoom, and select
- Use GPS to snap to a location
- Perform an automatic geospatial search of the map area
- Discover geographically relevant images, maps, reports, news, and social media
- Filter results based on metadata

Access and share maps, satellite images, airborne tactical images, charts, videos, audio, handheld photos, vectors, terrain, features of interest, PowerPoint presentations, and text documents.



## About BAE Systems

BAE Systems is a global defense, aerospace and security company with approximately 93,500 employees worldwide. The Company delivers a full range of products and services for air, land and naval forces, as well as advanced electronics, security, information technology solutions and support services. In 2011 BAE Systems reported sales of US\$ 30.7 billion.

## Geospatial eXploitation Products (GXP®)

BAE Systems is a global provider of commercial and government off-the-shelf software for image analysis, geospatial production, mapping, 3-D visualization, photogrammetry, and data management. GXP develops powerful software tools that are used to deliver highly accurate geospatial and intelligence data. BAE Systems has been a trusted supplier of imagery, geospatial products, and services to the defense and intelligence communities and commercial markets for more than 40 years. Its software, services, and innovations improve operations and long-term planning to ensure that decision-makers have the information they need — when every minute counts.

Based in San Diego, Calif., GXP provides direct worldwide sales and support. In some areas, this is done in conjunction with a select team of distributors to facilitate greater coverage and to provide effective customer service. GXP offers its customers top-quality technical support and training to optimize their return on investment.

### For more information on BAE Systems and GXP products:

#### Americas

Telephone 800 316 9643 | 703 668 4385  
Fax 703 668 4381  
[gxpsales@baesystems.com](mailto:gxpsales@baesystems.com)

#### Asia, Australia, and Pacific Rim

Telephone +61 0 2 6229 1665  
Fax +61 0 2 6230 4345  
[gxpsales.apac@baesystems.com](mailto:gxpsales.apac@baesystems.com)

#### Europe, Middle East, and Africa

Telephone +44 1223 370022  
Fax +44 1223 370040  
[gxpsales.emea@baesystems.com](mailto:gxpsales.emea@baesystems.com)

#### India

Telephone +91 11 43412345  
Fax +91 11 43412373  
[gxpsales.india@baesystems.com](mailto:gxpsales.india@baesystems.com)

For additional contact information and worldwide distributors, please visit our website:

**[www.baesystems.com/gxp](http://www.baesystems.com/gxp)**



## New user interface

- 

# GXP Web

- Launch directly from GXP Xplorer
- Perform ELT functions in a Web browser
- Stream images from GXP Xplorer or Esri ArcGIS servers
- Annotate and enhance images
- Collaborate with others
- Create reports in PowerPoint or GeoPDF

