



GXP PLATFORM

Release Enhancements

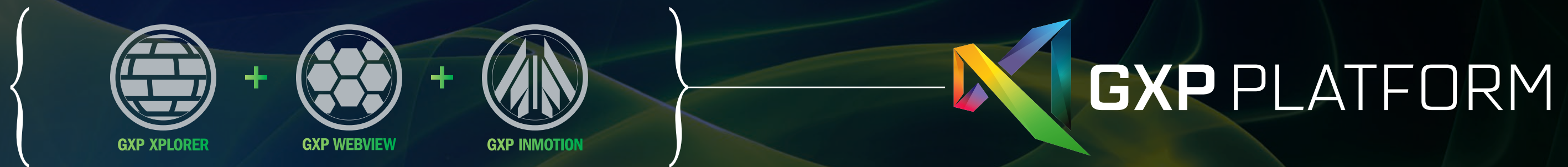
Includes server applications for
GXP Xplorer® + GXP WebView + GXP InMotion

Introducing the GXP Platform, a framework for the creation of custom enterprise solutions and the development of expanded capabilities.

Comprised of a core suite of products with a geospatial foundation, the GXP Platform represents the culmination of several decades of intellectual property and application development with an emphasis on accuracy, quality, and ease of use.

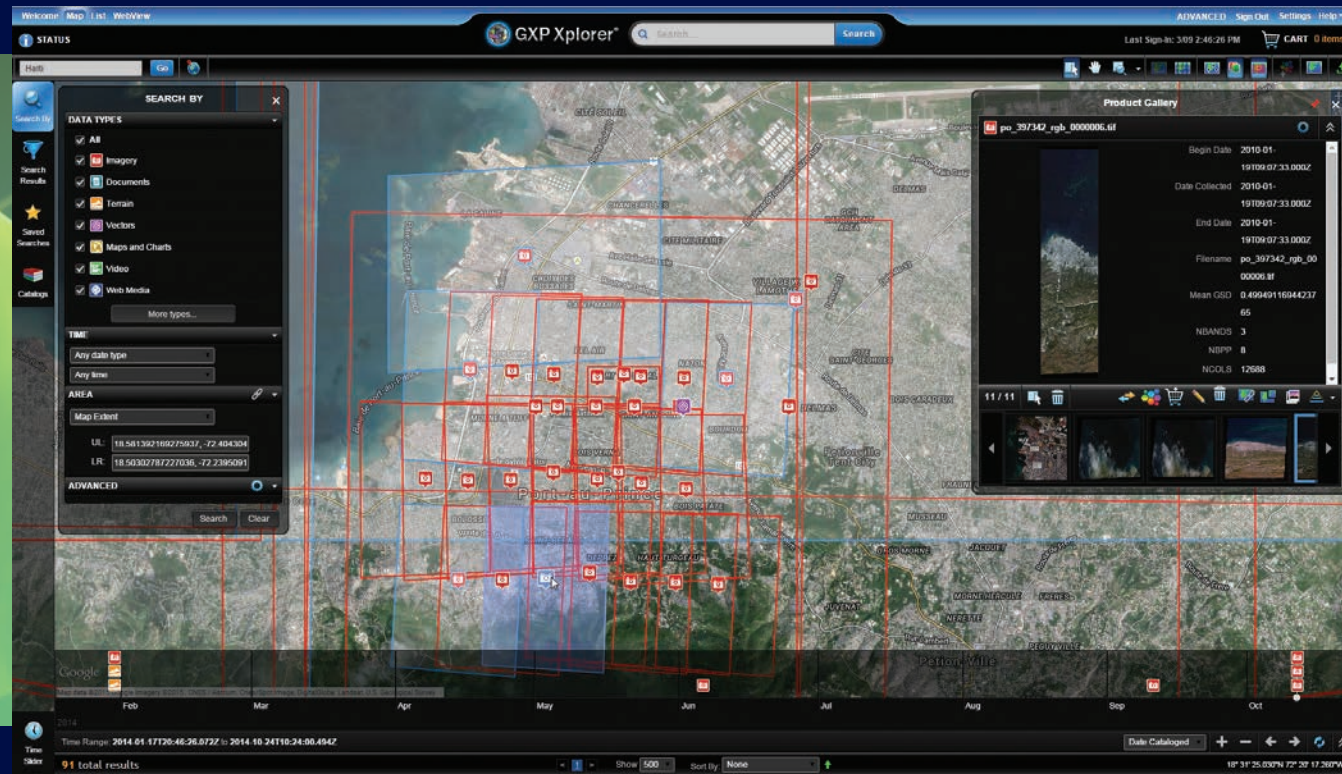
The GXP Platform offers a powerful foundation for unlimited capability and innovation to developers and system integrators.

BAE Systems Geospatial eXploitation Products (GXP®) has adopted the platform strategy in order to provide a flexible structure for the creation of solutions that meet organizations' unique workflows and requirements.



This premiere release of the GXP Platform includes server applications for GXP Xplorer®, GXP WebView, and GXP InMotion.

The CoreSDK from SOCET GXP® provides a central component from which services, server components, applications, and desktop solutions are built. Application program interfaces and open standards, such as Open Geospatial Consortium (OGC®) are provided by the GXP Platform and used as guidelines to advance the products. Moving forward, GXP engineers, system integrators and other geospatial professionals will be using the GXP Platform for product development.



GXP Xplorer

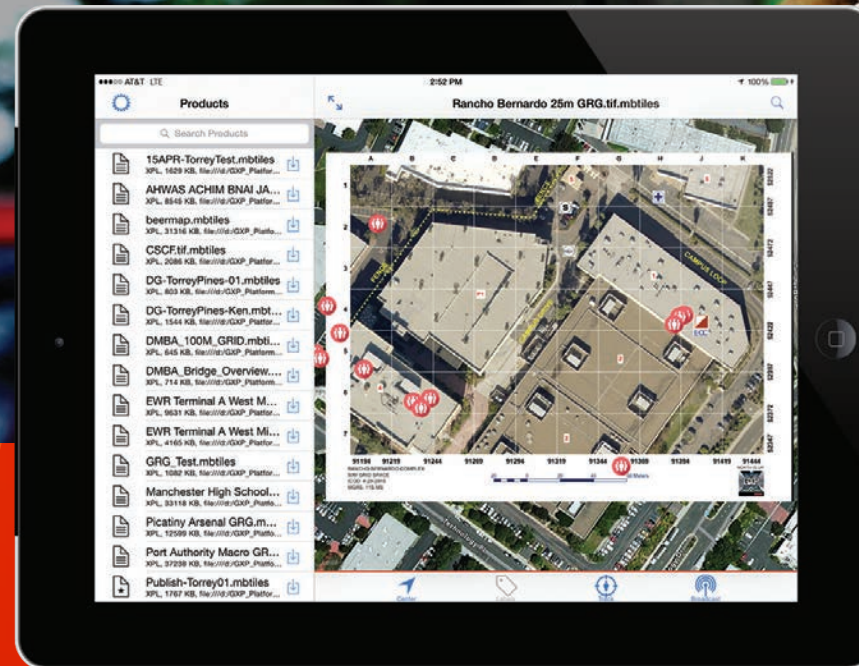
GXP Xplorer v2.2 scales to support hundreds of users. Performance enhancements were added to cataloging and processing, administration tasks improved, and the overall reliability and security of the application increased.

- Operational components can be distributed across multiple servers to optimize usage performance for hundreds of users
- Data processing such as thumbnail, overview, and image pyramid generation, can be distributed across multiple servers for faster throughput
- Cataloging runs in multiple threads, and only opens files with specific filename extensions rather than every file, for increased performance
- Cataloging progress is monitored with improved statistics displays
- User and group roles are assigned using a simplified new interface
- UNIX network file system (NFS)/cryptographic file system (CFS) events are cataloged more reliably
- Architecture is streamlined with the elimination of open source components GlassFish, Liferay®, and Apache Tomcat

GXP WebView

GXP WebView v2.2 updates focus on scalability and performance, with an emphasis on the pixel server/streamer, providing improved performance to the GXP WebView Web browser and SOCET GXP clients.

- The pixel server/streaming within GXP WebView includes additional OGC Web services for Web Map Tile Service (WMTS) publishing to the existing Web Map Service (WMS) publishing capabilities
- Raw imagery with metadata is orthorectified with the best available terrain to create image maps for WMS/WMTS publishing to clients and applications
- Display of circular error/linear error (CE/LE) accuracy information with markers and coordinate readout
- Enhanced Compression Wavelet (ECW) v3 imagery support



GXP InMotion

The GXP InMotion Video Server manages video exploitation tasks in an enterprise environment, allowing organizations to scale based on the number of video missions and analysts required to support real-time and forensic operations.

Video recorded from any airborne platform or other feed is streamed to the server with a delay of only a millisecond. The server supports ingest and streaming of real-time video feeds, DVR-like video recording, automated video registration, distributed mission management, and enhanced collaboration amongst mission workgroups. Live feeds are streamed to the server and then multicast to every analyst in a mission workgroup for review and analysis. Individuals can connect to pre-planned video missions that in-turn connect them to other analysts working on the same mission. Workgroup members can view a list of other analysts working on the mission and perform actions within the shared context of the group.

- Live video re-streaming
- Forensic video file streaming
- DVR capabilities
- Channel source setup and configuration
- Centralized Mission Manger
- Desktop-enabled collaboration

The GXP InMotion Video Server enables seamless integration between GXP Xplorer – for cataloging and dissemination, SOCET GXP – with image exploitation capabilities, and the GXP InMotion Video Desktop application. The server is also able to connect to other, third-party data servers and mobile apps.

Tactical, real-time command and control to first responders in the field.

The GXP OnScene mobile application allows incident command and responders in the field to work from a common operating picture for maximum efficiency and shared geospatial awareness at the scene of an event or crisis.

Leveraging the power of the GXP Platform and SOCET GXP's advanced image exploitation capabilities, GXP OnScene displays a tactical, customizable Grid Reference Graphic (GRG) overlay on top of up-to-date, personalized maps for ease-of-communication and enhanced interoperability. The location of personnel is displayed on the map using device GPS, providing responders with situational awareness and allowing the command center to coordinate and direct personnel in real-time.

GXP OnScene also works directly with SOCET GXP to create reports and products with integrated geospatial reference for use during investigations and for post-incident reports. Products can be stored in the GXP Xplorer catalog and shared or used for further analysis.

- Plan and prepare for an event or crisis
- Report from or recreate a scene
- Create a unified command post where multiple agencies collaborate and share responsibility of the incident
- Enable communication between ground personnel and aerial support to report back to the unified command post
- Provide direction for personnel on scene
- Locate personnel as situations evolve
- Coordinate mobile responders via GRG
- Share maps and location data in real-time



For more information on BAE Systems and GXP products:

Americas

800 316 9643 | 703 668 4385
gxpsales@baesystems.com

Asia, Australia, and Pacific Rim

+61 2 6160 4044
gxpsales.apac@baesystems.com

Europe, Middle East, and Africa

+44 1223 370022
gxpsales.emea@baesystems.com

India

+91 11 43412345
gxpsales.india@baesystems.com

For additional contact information and worldwide distributors, please visit our website:

www.baesystems.com/gxp

© 2015 BAE Systems. All rights reserved.

Trademarks: GXP, GXP Explorer, Multiport, and SOCET GXP are trademarks or registered trademarks of BAE Systems. Other brands, product names, and trademarks are property of their respective owners. Approved for public release as of 04/21/2015.