

SOCET GXP® v3.0

User interface

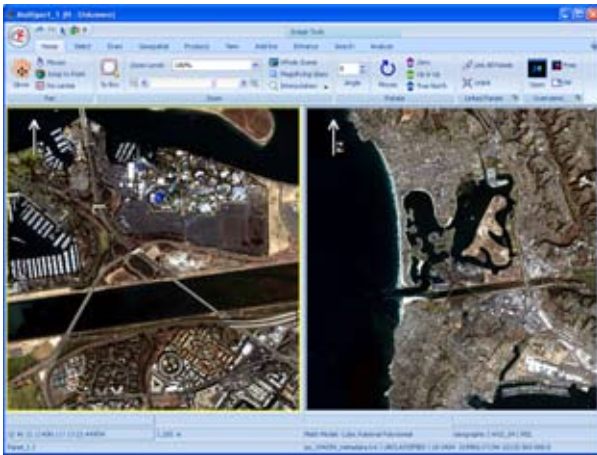
SOCET GXP v3.0 features an updated look and feel based on the Microsoft® Office Fluent™ user interface. The new user interface — the way it looks, the way it's organized, and the way users interact with it — is designed to simplify workflows and make the software easy to use for every kind of task.

This white paper examines the reasons for implementing a new user interface and introduces some of its key features.



Table of contents

| | |
|---|----------|
| Why does SOCET GXP v3.0 have a new user interface? | 1 |
| The Ribbon | 2 |
| The SOCET GXP button and menu | 4 |
| Quick Access Toolbar | 5 |
| The Mini Toolbar | 6 |
| Using the keyboard with the Ribbon | 7 |
| Conclusion | 8 |



The SOCET GXP v3.0 Multiport image viewing and exploitation window shown with the new Ribbon user interface.

Why does SOCET GXP v3.0 have a new user interface?

Before reviewing the details of the new user interface, it is important to understand why it has changed and the goals for adopting it.

The main reason for updating the SOCET GXP v3.0 user interface was to take advantage of a new design Microsoft developed to increase usability for multifaceted software applications. Microsoft invested more than three years of research and development and millions of dollars in the new user interface design. They analyzed over 3 billion data sessions collected from Microsoft Office software users; conducted surveys and usability studies; built hundreds of conceptual prototypes; and experimented with new designs through customer site deployments and beta programs. The goal was to develop a new interface that would be easy to use, save time, and help users access all functionality.

The Microsoft Office Fluent user interface establishes a new way of working with comprehensive software products. It organizes tools, uses contextualization to simplify the number of choices available at any given time, and provides a scalable platform to build on for the future. BAE Systems recognized that this flexible interface could offer accelerated product creation for its image analysis, geospatial production, and mapping software customers. Subsequently, the company moved forward to include the new user interface in SOCET GXP v3.0.

SOCET GXP v3.0 is the first commercial, end-to-end geospatial information management application to implement the Microsoft Office Fluent user interface. Users who have tested the new software like the increased flexibility to customize the workspace for many different tasks, and to access SOCET GXP's unprecedented range of powerful tools.

As an early adopter of this advanced technology, BAE Systems has built a ground-breaking software package with important discriminators in terms of functionality and efficiency. It is a notable accomplishment that is likely to transform the way the GIS and geospatial-intelligence communities manage data. Furthermore, it achieves BAE Systems' vision of developing one intuitive application for image analysis (IA) and geospatial analysis (GA) that is easy to learn and use. By consolidating multiple IA and GA tasks into one system, BAE Systems has created a versatile geospatial-intelligence tool for users and decision makers at all levels.

Today, most of the software Microsoft develops includes the new user interface, and a number of other companies have adopted it for their applications. Thus, the Microsoft Office Fluent user interface is well on its way to becoming the standard user interface for large-scale applications.

The Ribbon

The main component of the new user interface is called the Ribbon. The Ribbon replaces a traditional menu and toolbar system and organizes tools by tabs that correspond to each task. The tools on each tab are grouped by function, and many of the tools are labeled to make them easy to identify. The Ribbon stretches across the top of the Multiport viewing window and includes the following components:



- **Tabs** are designed to be task-oriented. The Home tab contains basic commands for using the application. Other tabs are organized by task.
- **Groups** within each tab break a task into subtasks. Each group contains a set of related commands that support the selected tab and tasks.
- **Commands** within each group are represented by controls such as buttons, sliders, and combo boxes. The controls work the same as in earlier versions of SO CET GXP

Contextual tabs

To maintain an organized workspace, some tabs are contextual and appear only when relevant to the current task. For example, the **Graphic Tools** tab, which contains commands for changing a graphic's color, line style, or fill pattern, appears when a graphic is selected. If a graphic is not selected, these commands are not available on the Ribbon. Contextual tabs are designed to alert the user to available functionality when needed.



Contextual tabs are a different color to make them easy to identify when they appear.



Dialog Launcher icon

Dialog Launchers

Some groups on the Ribbon include a small icon in the bottom right corner called a Dialog Launcher. A Dialog Launcher provides additional options or advanced functionality related to that group.

For example, to draw a graphic, the user selects the **Shapes** group on the **Draw** tab. All graphics associated with drawing shapes are located in this group. If the desired shape is not displayed, the user can click the Dialog Launcher to see the full set of shapes available in the **Drawing Toolbox**.

Scalability

The Ribbon scales up or down, depending on the size of the Multiport window, to accommodate laptop computers and desktop systems with multiple 30-inch monitors. If the window is wide, the Ribbon uses the extra space by labeling commands and replacing small icons with large icons. If the window is smaller, the Ribbon packs more information into less space by hiding labels, replacing large icons with small ones, and consolidating functional groups into a single icon with a drop-down menu.

No matter how large or small the Multiport window is, the Ribbon height never varies. When a user resizes a window, all of the commands on the Ribbon remain in the same relative position. This makes it easy to find and select commands.

Minimizing the Ribbon

Users working on a small screen, or who wish to minimize the footprint of the user interface and maximize the workspace viewing area, can do so by minimizing the Ribbon.

To minimize the Ribbon:

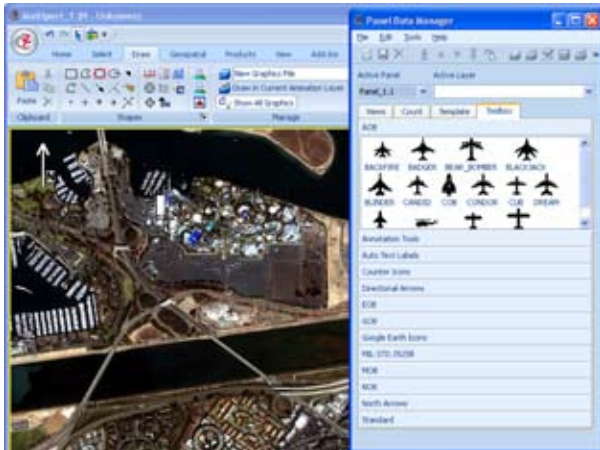
- Double-click the selected tab, or
- Right-click and select the **Minimize the Ribbon** option, or
- Press CTRL+F1 on the keyboard.

To restore the Ribbon to full size:

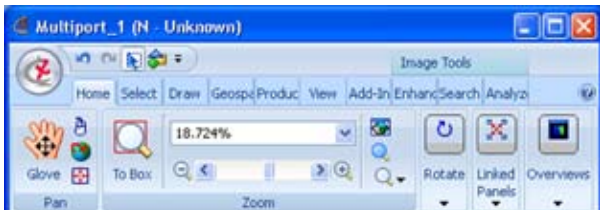
- Double-click a tab again to restore the Ribbon.

To access the Ribbon while it is minimized, the user clicks the tab where the desired command is located. The Ribbon appears temporarily, allowing the user to select the command, and then returns to its minimized state.

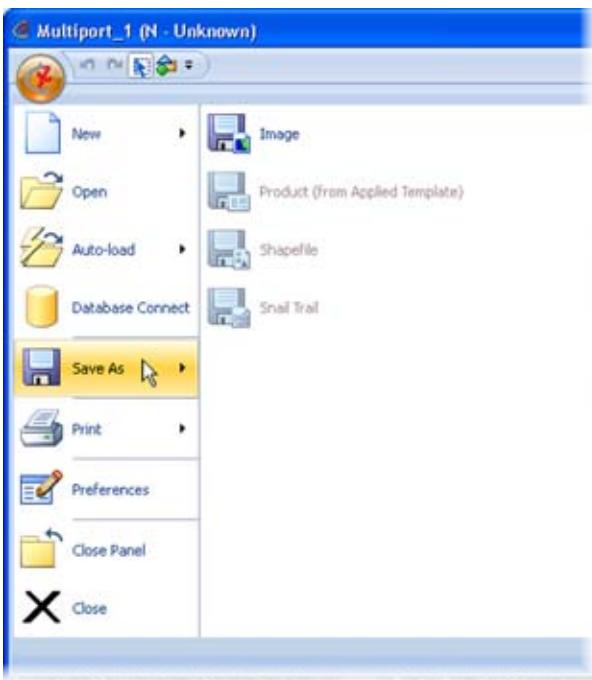
Note: It is possible to use the keyboard to navigate the Ribbon while the Ribbon is minimized. For more information, see *Using the Keyboard to Work with the Ribbon*.



The Dialog Launcher icon provides access to additional options related to the functional group on which it is located.



The Ribbon scales to accommodate screen size; on smaller displays space is economized by hiding labels, replacing large icons with small ones, and consolidating functional groups.



The SOCET GXP button and menu

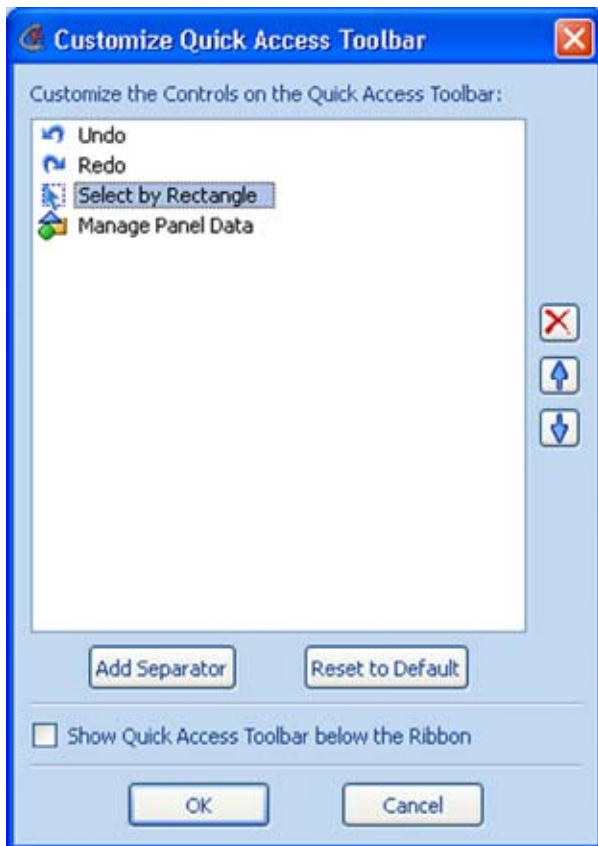
The SOCET GXP button is the round button with the SOCET GXP logo on it, located in the upper-left corner of the Ribbon. It replaces the **File** menu, and groups all of the file-level commands in one central place, making it easy to access these features.

When the user clicks the SOCET GXP button, the SOCET GXP button menu appears with two panels. The left panel has commands for opening, saving, and printing data. The right panel displays further options related to the selected command.

The SOCET GXP button is the access point for all file-level commands, such as Open, Save, and Print.



The Quick Access Toolbar can be displayed either above or below the Ribbon.



The Customize Quick Access Toolbar window allows the user to rearrange the order of commands on the Quick Access Toolbar, add separators between commands, and remove unwanted commands.

Quick Access Toolbar

The Quick Access Toolbar is a toolbar that the user can customize to display the commands used most often in a particular workflow. Commands on the Quick Access Toolbar are always visible and available, regardless of which tab is currently displayed.

To add a command to the Quick Access Toolbar:

1. On the Ribbon, click the tab that contains the command to add to the Quick Access Toolbar.
2. Right-click on the command to add, then select **Add to Quick Access Toolbar** on the shortcut menu.

Note: Any command on the Ribbon can be added to the Quick Access Toolbar, including Dialog Launchers and commands on the SO CET GXP Button menu, such as **Save** and **Print**. The user can also add drop-down menus, sliders, combo boxes, and spin boxes. The only items that cannot be added to the Quick Access Toolbar are the individual options in a drop-down menu or combo box. In this instance, the user should add the command for the entire drop-down menu or combo box.

The Quick Access Toolbar can be located in one of two places.

- The upper left corner of the Ribbon, next to the SO CET GXP Button; this is the default setting.
- Below the Ribbon, if more room is needed for commands. Displaying the Quick Access Toolbar in this location reduces the viewable area in the Multiport.

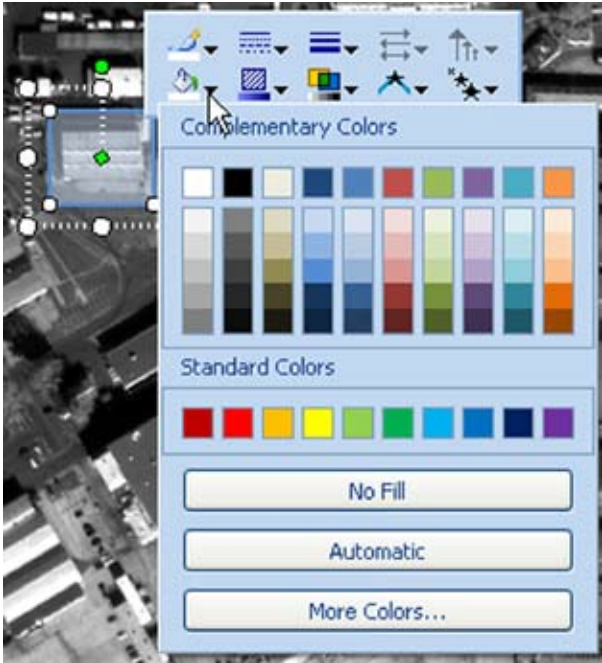
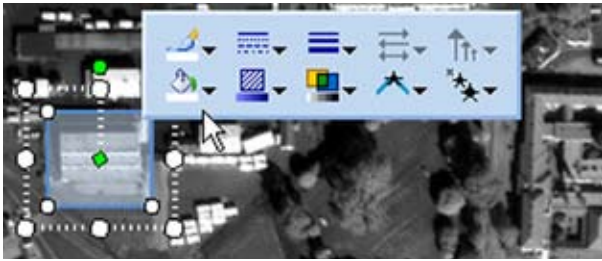
To change the location of the Quick Access Toolbar:

1. Right-click on the Ribbon, or click the **Customize Quick Access Toolbar** button on the right end of the **Quick Access Toolbar**.
2. Select **Show Quick Access Toolbar Below the Ribbon** or **Show Quick Access Toolbar Above the Ribbon** from the list.

After adding a number of commands to the Quick Access Toolbar, the user may decide to improve its organization.

To rearrange the contents of the Quick Access Toolbar:

1. Right-click on the Ribbon, or click the **Customize Quick Access Toolbar** button on the right end of the **Quick Access Toolbar**.
2. From the menu, select the **Customize Quick Access Toolbar** option. This displays the Customize Quick Access Toolbar window, which allows the user to rearrange the order of commands on the Quick Access Toolbar, add separators between commands, and remove unwanted commands.



The Mini Toolbar

The Mini Toolbar is a small, floating toolbar that improves efficiency for mouse-oriented users by providing fast and convenient access to commonly used commands. The Mini Toolbar automatically appears when working with certain objects, and displays commands that are contextually relevant to the selected object. One of the benefits of the Mini Toolbar is that all tools needed for the current workflow are quickly accessible from one tab.

After a graphic is selected, the Mini Toolbar appears as a small, semi-transparent toolbar. Users can also access the Mini Toolbar by right-clicking on a graphic. When moving the cursor toward the Mini Toolbar, it darkens to full opacity; when moving the cursor away from the Mini Toolbar, it fades away.

The Mini Toolbar is easy to hide when it is not needed. There is also a preference to turn off the Mini Toolbar so it does not appear when a graphic is selected.

In SOCET GXP v3.0, the Mini Toolbar is available for the active panel. If the user right-clicks the active panel, a contextual menu appears with a Mini Toolbar that contains commonly used commands such as pan, zoom, and rotate. The user does not have to switch back and forth between tabs to access commands, add them to the Quick Access Toolbar, or clutter the Quick Access Toolbar with unnecessary commands.

Note: *The contents of the Mini Toolbar are determined by context and cannot be customized.*

Using the keyboard with the Ribbon

If the user prefers to use the keyboard instead of a mouse, the Ribbon provides two ways to access commands, Hot Keys, and KeyTips.

Keyboard shortcuts

Most of the keyboard shortcuts from earlier versions of SOCET GXP, also called Hot Keys, have been preserved. SOCET GXP v3.0 enables the user to customize keyboard shortcuts by selecting **Tools > Customize Hot Keys** from the **Workspace Manager** menu.



Pressing the ALT or F10 key displays KeyTips for all of the features available in the current view.

KeyTips

The Ribbon provides a feature called KeyTips that allows users to access any command in a few keystrokes. Most commands are accessible by using two-to-four keystrokes.

For example, to turn Terrain Tracking on and off using only the keyboard:

1. Press the ALT or F10 key to display KeyTips for all of the high-level Ribbon elements, the SOCET GXP Button, Quick Access Toolbar commands, and tabs. Note the letters that appear below each element — these are the KeyTips.
2. Press the letter shown in the KeyTip to access a feature. Depending on the feature, additional KeyTips may be shown.
3. The user can continue to press letters until the desired command is selected.

For example, a user can press the G key to access the **Geospatial** tab, where Terrain Tracking is located. The **Geospatial** tab also displays the KeyTips for the commands found there. Then the user can press the T key and then the O key to turn Terrain Tracking on and off.

***Note:** If an incorrect key is pressed, pressing ESC once reverts to the previous step; pressing ESC multiple times reverts back multiple steps. Pressing the ALT key cancels the operation and hides the KeyTips.*

Alternatively, after pressing and releasing the ALT or F10 key, the user can press the arrow keys to navigate the Ribbon. With the arrow keys, the user can move up, down, left, or right among the items on the Ribbon. The arrow keys move the focus among tabs and commands; the item that currently has focus is highlighted. Once the focus is on the desired command, the user can activate it by pressing the SPACEBAR or ENTER key.

Conclusion

One of the goals of SOCET GXP v3.0 is to help users do their jobs more effectively. The new user interface, based on the Microsoft Office Fluent user interface design, organizes tools in a way that is intuitive and easy to learn. The Ribbon displays tools when needed, and hides them if they are not relevant to the current task. There are many new features that help users navigate the application. For example, the Quick Access Toolbar and Mini Toolbars make command access quick and efficient for mouse users, while KeyTips allow keyboard users to locate commands with a minimum of keystrokes. As a result, individuals and organizations can take advantage of the increased flexibility SOCET GXP offers for task-based workflows, application preferences, and streamlined access to information.

With the implementation of the new user interface and pushbutton processes that are available for the first time, BAE Systems continues its legacy as a technology innovator. As a result, SOCET GXP is becoming the tool of choice among mapping professionals, image analysts, geospatial analysts, and photogrammetrists.

FOR MORE INFORMATION

Americas

Telephone 800 316 9643 | 703 668 4385
Fax 703 668 4381
socetgxp.sales@baesystems.com

Europe, Middle East, and Africa

Telephone +44 1223 370023
Fax +44 1223 370040
socetgxp.emea.sales@baesystems.com

Asia, Australia, and Pacific-Rim

Telephone +61 0 2 6273 0111
Fax +61 0 2 6273 0368
socetgxp.asia.sales@baesystems.com

www.baesystems.com/gxp

© 2008 BAE Systems National Security Solutions Inc. All rights reserved. All trademarks used are property of their respective owners.

NS-C3I-101008-0124 EXPORT-CONTROLLED DATA: These commodities, technology, or software are controlled for export in accordance with the U.S. export laws. Diversion contrary to U.S. law is prohibited. Release of this brochure is approved as of 10/10/2008. This document gives only a general description of the product(s) or service(s) offered by BAE Systems and, except where expressly provided otherwise, shall not form part of any contract. From time to time, changes may be made in the products or conditions of supply.