



GXP PLATFORM v2.2.1


RELEASE ENHANCEMENTS

GXP PLATFORM v2.2.1

A POWERFUL FOUNDATION FOR NEW CAPABILITIES IN THE GXP SUITE OF PRODUCTS.

Providing the foundation for development of the most advanced geospatial intelligence, the GXP Platform delivers an unrivaled capacity for identification, visualization, and exploitation of mission critical data.

The GXP Platform provides application developers and system integrators with a configurable solution that can be expanded upon and easily integrated into enterprise deliverables.

- 
- Enhanced ease-of-use through the new Layer Manager
 - Infrastructure updates supporting new versions of Internet Explorer (IE11), GeoServer, and NodeJS
 - Configuration management upgrades including setup and runtime usability
 - Improved interoperability between GXP solutions
 - Superior Web performance
 - Support for new formats

LAYER MANAGER

IMPLEMENTED IN GXP XPLOERER® AND GXP WEBVIEW

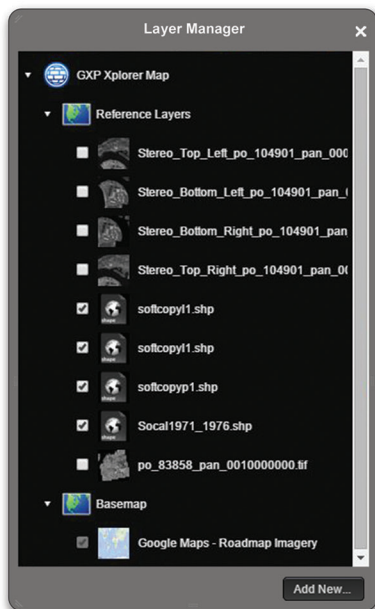
Easily toggle, manage, and position geospatial content layers

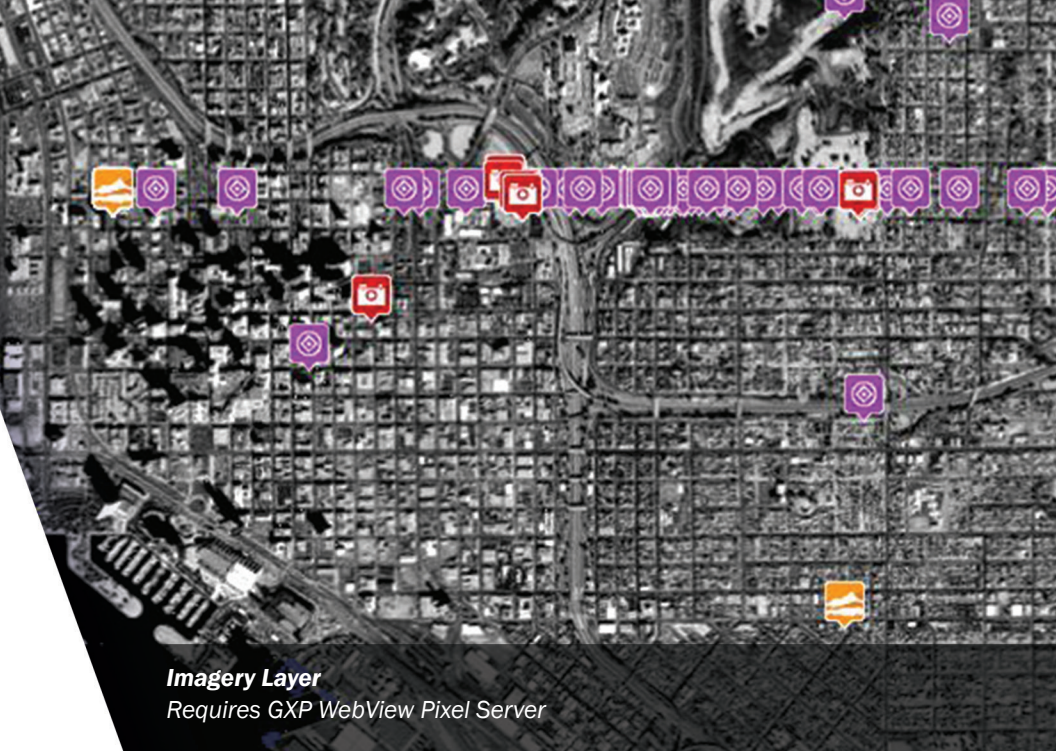
Content layers

- Open Geospatial Consortium (OGC®) Services
- Esri® ArcGIS Services
- Google Maps
- OGC Web Map Service (WMS)
- Cataloged shapefiles
- Cataloged imagery

Layer control

- Right-click on a layer to manage the layer:
 - Move to Top
 - Move Up
 - Move Down
 - Move to Bottom
 - Rename layers
 - Designate layers as Basemaps
(available only in GXP Xplorer)
 - Remove layers
- Select check box to turn layers on/off





Imagery Layer

Requires GXP WebView Pixel Server



Shapefile Layer

Requires GeoServer and GXP WebView Pixel Server

GXP XPLORER UPDATES

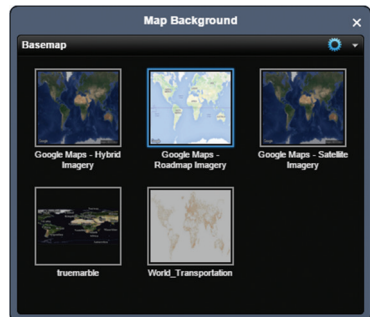
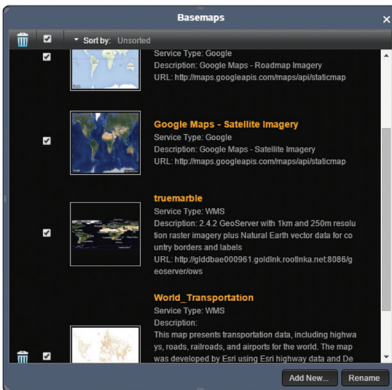
UPDATED FUNCTIONAL SUPPORT

- Support for Internet Explorer 11
- Support for GeoServer 2.8.2
- Support for NodeJS 4.1.2
- Support for DRS 5.4.01.R12
- Account for diminishing support for browser applets including Java by providing zip-and-ship for multi-file downloads

BASEMAPS

Change background map

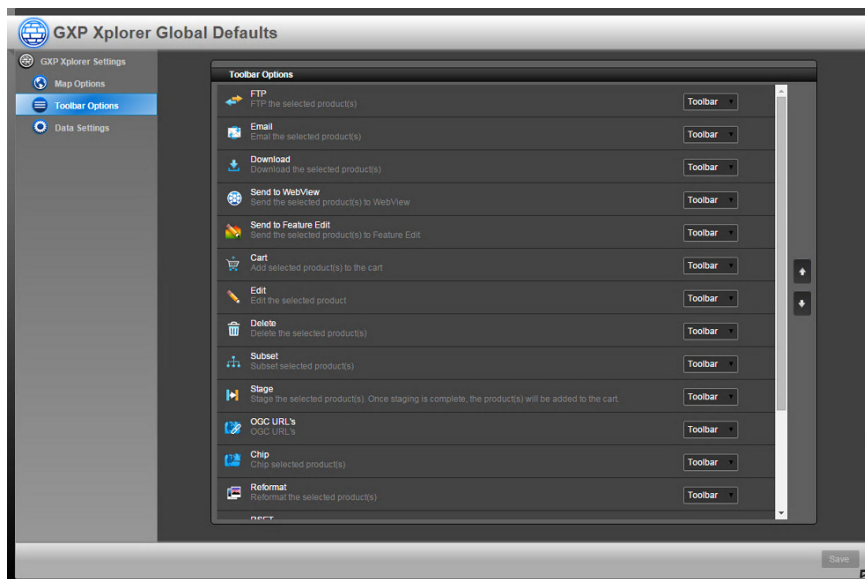
- Select from a list of available Basemaps supporting popular services and OGC:
 - Google Maps
 - WMS services
 - Esri ArcGIS Server Web Service
- Manage the list of available Basemaps
 - Add/delete, rename and sort various Web services for map backgrounds



USABILITY

Administrators can now control global default settings

- Map Grid Display including grid interval and line styles
- Map Footprints on/off
- Auto Search on/off
- Image Download Conversion settings
- Displayed metadata settings
- Ability to customize user interface
 - Control which functions are visible by default
- Password administration
 - Specify a character set for password patterns
- Create mandatory user information fields
 - Add * to all fields that require user input for the configuration of the server components
- Turn off text to coordinate converter





Center Map To...

Go



Search By

Search Results

Saved Searches

Catalogs

The screenshot shows the GXP Xplorer interface with a map of San Diego. A 'Product Gallery' window is open, displaying a product named '2.tif'. The gallery shows a thumbnail of the product and a list of metadata.

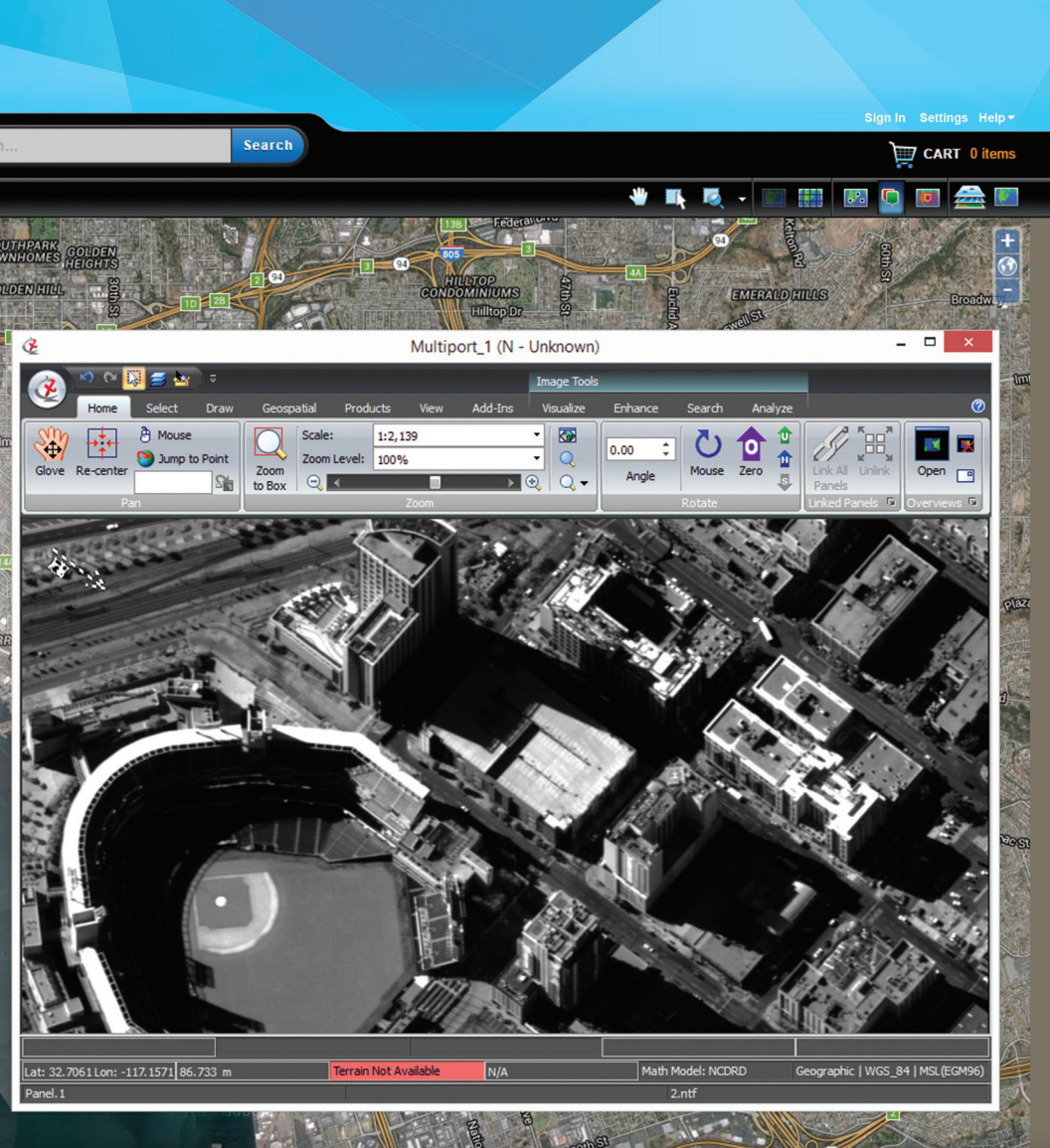
Property	Value
Azimuth of Obliquity	50.729
Begin Date	2009-11-24T18:45:47.000Z
Cloud Cover	3
CSDIDA Sensor ID	AA
Date Collected	2009-11-24T18:45:47.000Z
Derived Sensor Name	WV01
End Date	2009-11-24T18:45:47.000Z
Error Bias	11.67
Error Random	0.15

The interface also includes a search bar, a map view, and a sidebar with navigation options.

STREAM INTO SOCET GXP®

Requires GXP WebView Pixel Server

- No need to download the imagery for exploitation in SOCET GXP
- Image sensor support including sensor modeling, stereo, triangulation, annotation, product creation, etc.
- Publish from SOCET GXP to GXP Xplorer
- JPEG 2000 Interactive Protocol (JPIP) streaming with metadata into SOCET GXP



ADDITIONAL ENHANCEMENTS

Improved Web performance

- Run GXP Xplorer without a background map in the List page
- Faster GXP Xplorer Web Client page loading

Identify country code and military region from a shapefile

- Update catalog metadata in GXP Explorer for geospatial data to include the military region and country code as new attributes, based on a set of country boundaries
- Country boundaries are in shapefile format and can be updated by the customer

Search on Sensor

Filter queries on specific sensors

Intuitive geotagging

Easily geotag data using Jump to Point on the List page

Cataloging improvements

- Catalog non-standard Controlled Image Base (CIB) files (those without an a.toc parent file) and load as imagery
- Catalog zipped shapefiles

GXP WEBVIEW UPDATES

GENERAL ENHANCEMENTS

- Supports Web Mercator (EPSG 3857)
- JPIP performance improvements: user can set buffer size

LAYER MANAGER

With the addition of the Layer Manager, the filmstrip interface in GXP WebView has been removed

- Easily switch between different geospatial layers
- Allow multiple geospatial layers to be loaded together
- Exploit and annotate an image, switch imagery and return to the original image without losing the graphics layer

***For more information on BAE Systems
and GXP products:***

Americas

Telephone 800 316 9643 | 703 668 4385
Fax 703 668 4381
gxpsales@baesystems.com

Europe, Middle East, and Africa

Telephone +44 1223 370022
Fax +44 1223 370040
gxpsales.emea@baesystems.com

Asia, Australia, and Pacific Rim

Telephone +61 2 6160 4044
Fax +61 2 6160 4001
gxpsales.apac@baesystems.com

India

Telephone +91 11 43412345
Fax +91 11 43412373
gxpsales.india@baesystems.com

For additional contact information and worldwide
distributors, please visit our website:

www.baesystems.com/gxp

© 2016 BAE Systems. All rights reserved.

Imagery provided courtesy of DigitalGlobe. Maps provided by Google Maps™. Shoreline data courtesy of the National Oceanic and Atmospheric Administration (NOAA) National Geodetic Survey (NGS) Coastal Mapping Program. Shoreline change data courtesy of the U.S. Geological Survey (USGS).

Trademarks: GXP, GXP Explorer, Multiport, SOCET GXP, and SOCET SET are trademarks or registered trademarks of BAE Systems. Other brands, product names, and trademarks are property of their respective owners. Approved for full public release as of 2/11/2016.