

Release Enhancements

GXP WebView® • GXP Xplorer® • GXP InMotion™
GXP Fusion™ • GXP OpsView®



v2.4

BAE SYSTEMS



An unrivaled capacity for discovery, exploitation, and dissemination of mission-critical geospatial and temporal data

The v2.4 release of software solutions powered by the GXP Xplorer® Platform represents the next evolution in industry leading geospatial management and exploitation tools from BAE Systems. This release includes the introduction of our new GXP Fusion™ software solution, a powerful tool that enables the creation of customized dashboards and a wide variety of analytic services designed to identify and extract intelligence across a wide variety of all-source data.

Additional improvements include the following:

- » Development of customized dashboards including maps, imagery, charts, and a network graph to identify intelligence relationships and patterns using GXP Fusion software
- » A new workflow management tool enabling task creation, assignment, exploitation, and quality assurance across our GXP Xplorer, GXP WebView®, and SOCET GXP® solutions
- » Observation collection within GXP WebView software allowing users to identify objects of interest, describe activities of the object, and store those observations for exploitation in products such as our GXP Fusion solution
- » Updated object storage support for cataloging S3 buckets using our GXP Xplorer data management solution

Developed in collaboration with customers, these enhancements ensure an optimal user experience while increasing synergies within the expanding GXPTM product ecosystem.

GXP Xplorer v2.4

GXP Xplorer software continues to be enhanced with capabilities that, when combined with other products in the GXP ecosystem including our GXP Fusion, GXP InMotion™, GXP WebView, and SOCET GXP solutions, allow for streamlined access to a robust array of geospatial content that can be analyzed and mined for critical relationships and intelligence data.

Key enhancements:

- » Workflow creation and task management
 - Automatic task creation based on cataloged imagery or user defined parameters
 - Define candidate analysts and quality assurance (QA) personnel on a per task or location basis
 - Move tasks between analysis, QA, and completion states
 - Publish output products to the GXP Xplorer catalog
- » Native cataloging of S3 buckets
- » Improved Data Model Import and Export
- » Streamlined mapping of Custom Data Model Objects to the GXP Xplorer user interface
- » Allow conversion and download of multiple products at one time*
- » Allow transcoding of files during FTP*
- » Upgrade to MSP v1.6.1*

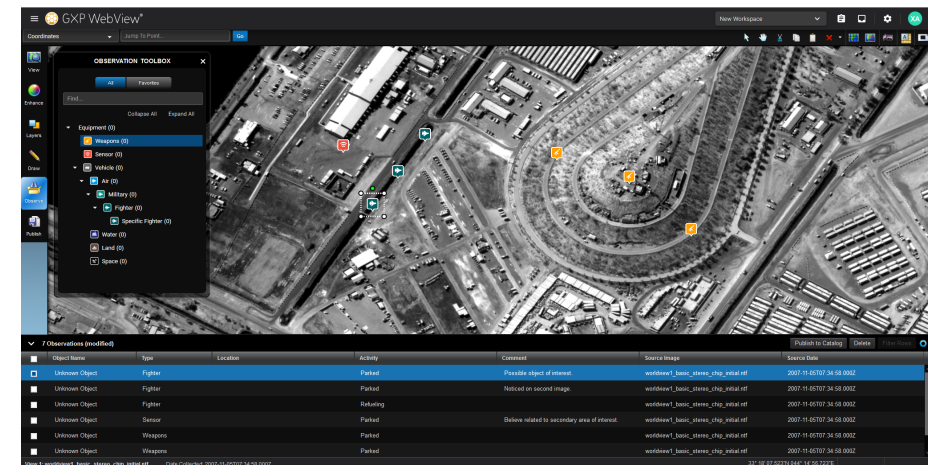
**included in GXP Xplorer v2.3.6.2 software*

GXP WebView v2.4

GXP WebView software introduces a new mechanism for collecting and attributing observations that can be stored in the GXP Xplorer database, and then mined with GXP Fusion capabilities to identify relationships between objects, locations, and activities. In addition, a variety of usability enhancements have been included for an improved user experience.

Key enhancements:

- » Preferences for initial image orientation (up-is-up / shadows down, North is up, original orientation)
- » Improved output resolution and sizing when exporting templated images to Microsoft PowerPoint®
- » Observation Toolbox has been added to quickly drop noted objects of interest in a scene
 - » Attribute table allows analysts to quickly define information about those objects
 - » Objects are stored in the GXP Xplorer database for future analysis
 - » Optional dual publication of observations to Esri® geodatabases



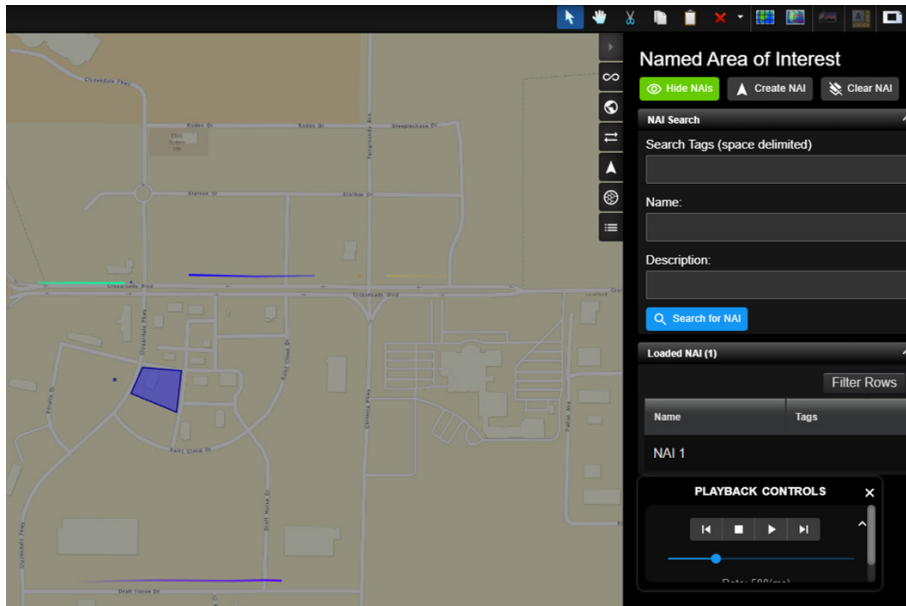
Observation collection using GXP WebView software. Imagery courtesy of Maxar.

GXP WebView MOVINT v2.4

New Movement Intelligence (MOVINT) features for our GXP WebView software solution include a variety of track management, query capabilities, and advanced analytics.

Key enhancements:

- » Named Area of Interest (NAI) creation
 - » Track Stitching integrated algorithm
 - » Comma Separated Value (CSV) Tracking Analytics Software Suite (TASS) ingest User Interface (UI)
 - » Normalcy Modeling algorithm and UI (est. v2.4.3)
 - » Integration of MOVINT data on GXP InMotion Web video player (est. v2.4.3)
-



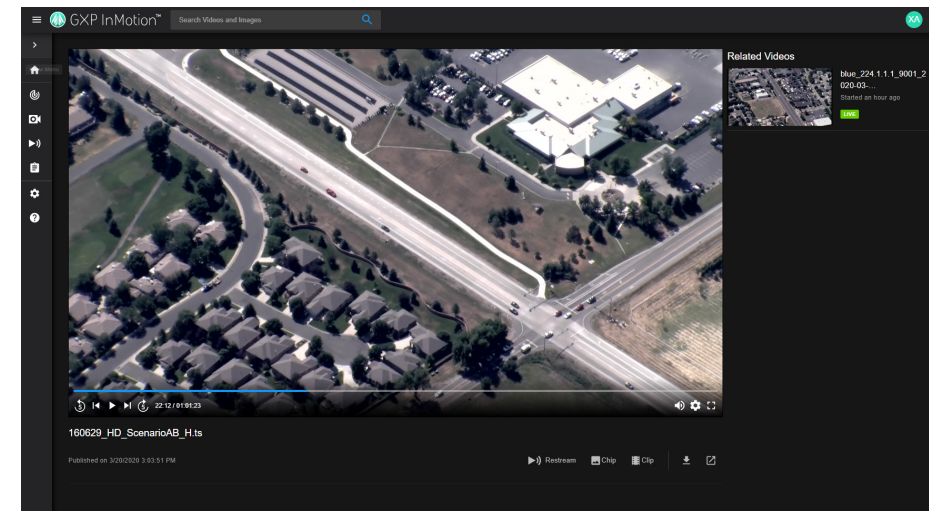
Search and discover tracks over an area of interest using GXP WebView MOVINT software.

GXP InMotion v2.4

GXP InMotion software continues to evolve and advance video exploitation workflows with a wide variety of enhancements that will increase production, reduce latency, and improve intelligence extraction.

Key enhancements:

- » Support for HTTP Live Streaming (HLS), a standard adaptive bitrate video delivery that is a combination of server and client software that detects a client's bandwidth capacity and adjusts the quality of the video stream between multiple bitrates and resolutions
 - » Introducing GXP InMotion Web, a browser-based video exploitation tool that uses HLS to allow for chipping and clipping of video in a browser
 - » Updated Mission and Capture UI
 - » GXP InMotion Server can now pass UDP feeds directly to TASS for track generation while capturing the original feed
-



Video exploitation in the web utilizing GXP InMotion Web capabilities.

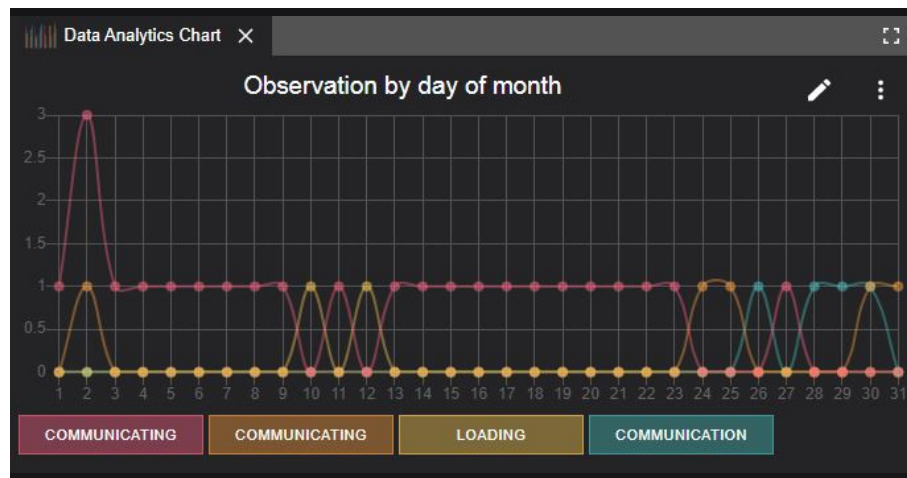
GXP Fusion

Enabling development of a multi-INT Common Intelligence Picture (CIP), GXP Fusion software is designed to meet the complex data challenges confronting the modern all-source analyst. This new solution enables analysts to fuse a high volume of disparate data sources into a multi-perspective view, allowing for delivery of insightful intelligence and enhanced situational awareness.

Key enhancements:

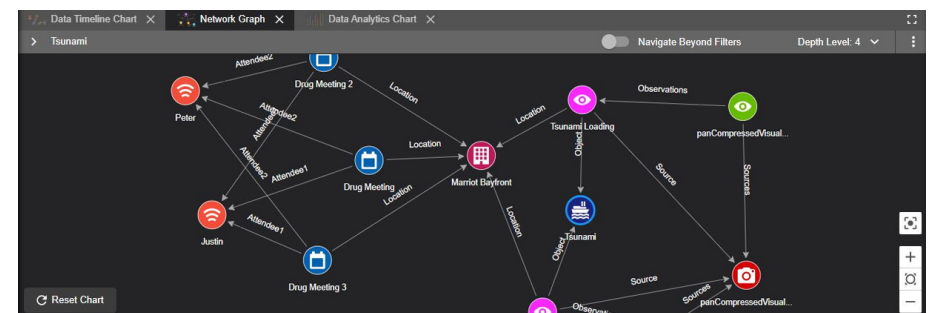
» Widget Gallery

- Data Analytics Chart
 - Create and display for analyzing occurrences
 - Focus on any data type
 - Adjustable sampling frequency
 - Analytic measures (count, max, min, average)
 - Styles (Column, Bar, Line)
 - Adjustable Time Range
 - Sync with filters on/off
 - Download



Identify activity over time to determine trends and identify anomalies using GXP Fusion software.

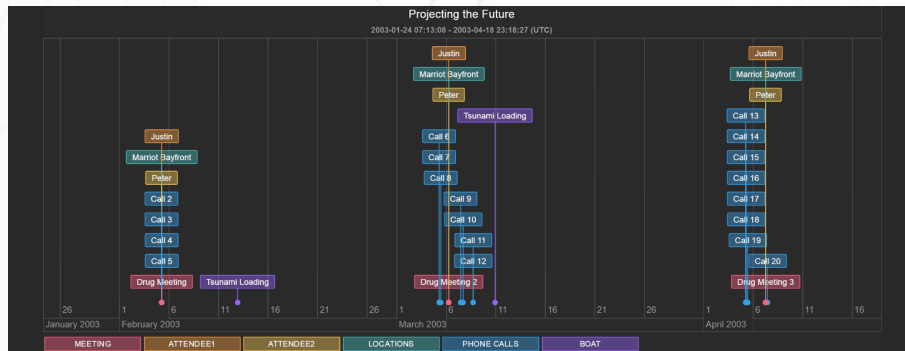
- Data Feed Globe
 - Display geotagged products on globe
 - Icons based on Data Model Settings
 - Area Filter
 - 3-D and 2-D view
 - Adjustable Map Background
 - Sync with filter on/off
 - Preview mode
 - Show Footprints on/off
 - Show Footprints on hover
 - Select for Download, Edit Metadata, Open In, and More Details
- Data Feed List
 - Show geotagged and non-geotagged products in tabular list
 - Sync with filters on/off
 - Show List and Properties on/off
 - Configure columns by data type
 - Select for Download, Edit Metadata, Open In, and More Details
 - Separate tabs for each data layer
- Network Graph
 - Shows linked relationship between objects in the catalog
 - Sync with filters on/off
 - Download graph as GraphML, GraphSON, and PNG
 - Select for Download, Edit Metadata, Open In, and More Details
 - Focus on Selection, Navigate Beyond Filters, Depth Level
 - Zoom, Pan, Zoom to fit, and Reset Chart



View relationships between objects, locations, and activities using the Network Graph capability.

- Data Timeline Chart

- Show objects in GXP Xplorer catalog on a timeline, useful for predicting patterns
 - Sync with filters on/off
 - Download and Zoom to Fit
 - Add Series (multiple)
 - Set Focus, Filters, and Label for series
 - Organize by Colors and Rows
-



Show timelines to determine temporal relationships between objects.

- » Observation Panel

- Create observations from map, imagery, and documents
- Observations stored in GXP Xplorer database

- » Filters

- Filters for Area and Time
- Filter on Date Types
- Filters affect all widgets dynamically

- » Data Layers

- Create data layers for all types of data
- Layers can be filtered by time and area
- Additional level of filtering for specified data type

- » Workspaces

- Open, Save, Edit, and Delete workspaces
 - Watch This Workspace
 - Workspace Notifications
-



Geospatial solutions
to ensure **a safer world.**

GXP Customer Support

Americas

800 316 9643

Asia

+603 2191 3000

Australia and New Zealand

+61 2 6160 4000

Europe, Middle East, and Africa

+44 1223 370 022

Customer Portal

www.MyGXP.com

Email

gxp.support@baesystems.com

Licensing

Software licenses may be requested
on the MyGXP Customer Portal:

www.MyGXP.com

For additional support and contact
information, please visit our website:

www.baesystems.com/gxp