

GXP Xplorer® and GXP WebView® v2.4.3 release details

Nicholas Rosengarten
GXP® Product Development



Infrastructure

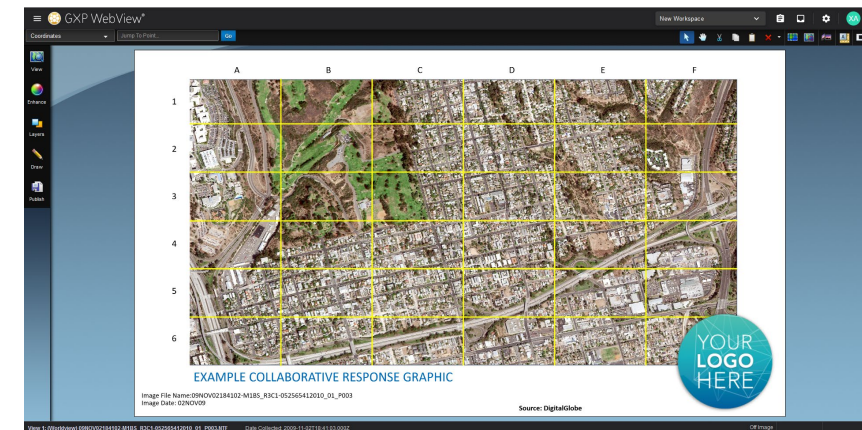
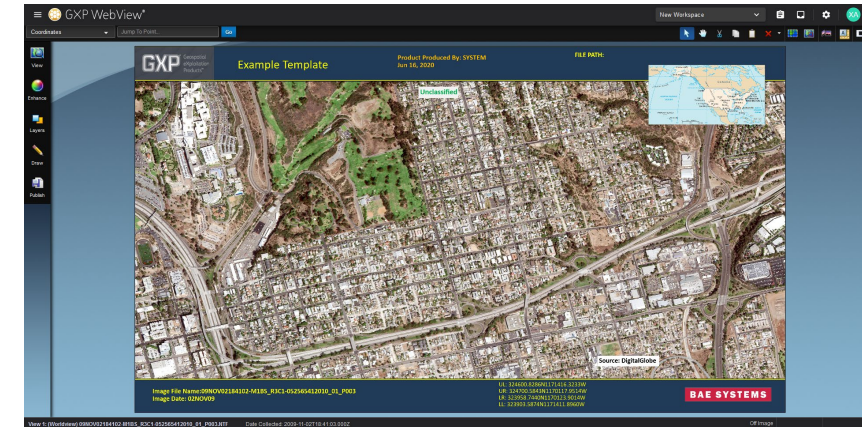
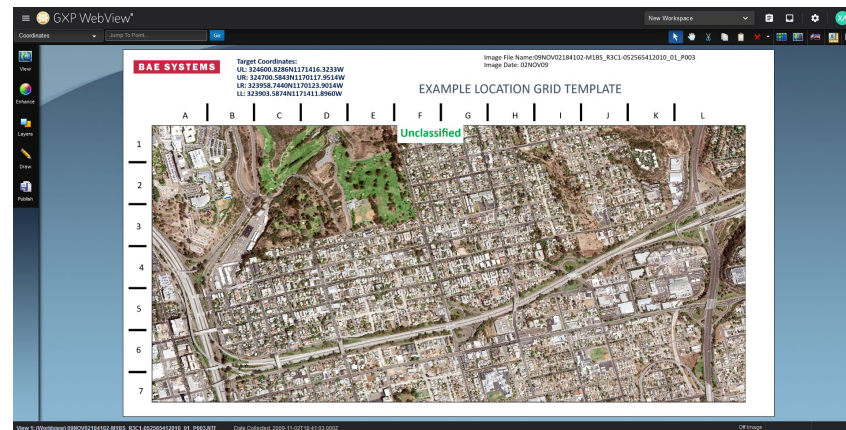
- MSP has been upgraded to v1.6.2
- DRS has been upgraded to v5.6.03.R6
- Federation is supported from GXP Xplorer® Platform v2.3.4.3 or later
- Upgrade is supported from GXP Xplorer Platform v2.3.4.3 or later
 - Reclassification no longer has to run after an upgrade (only relevant when upgrading from v2.3.x and earlier to v2.4.x or later)
 - It is done as part of the upgrade itself which could cause longer upgrade times with large catalogs, however, all data will be available to be searched immediately upon a successful upgrade

Multi-component file updates

- GXP Xplorer by default will no longer return sub-components as individual hits when running a search
 - Only the parent holding will be returned
 - Users can still see the individual sub-components through the View Container Contents button
 - This behavior is configurable by modifying the following file:
 - %GXP_XPLORER_DATA%\config\web-client\webClient.properties
 - search.excludeSubComponents=true
- GXP WebView® will now show all sub components individually as layers in the Layer Manager
 - When in single mode, the last component will be displayed by default
 - Previous versions attempted to mosaic the file even in single mode
 - If there is a mix of georeferenced and non-georeferenced imagery and GXP WebView is in multi-mode, only the georeferenced imagery will be mosaicked

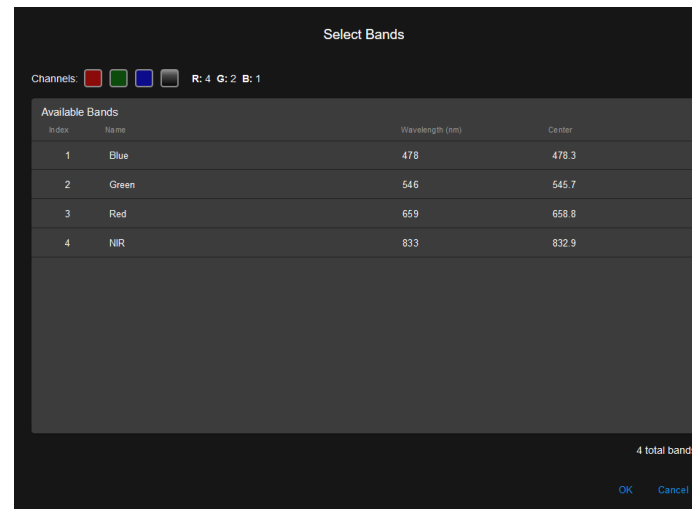
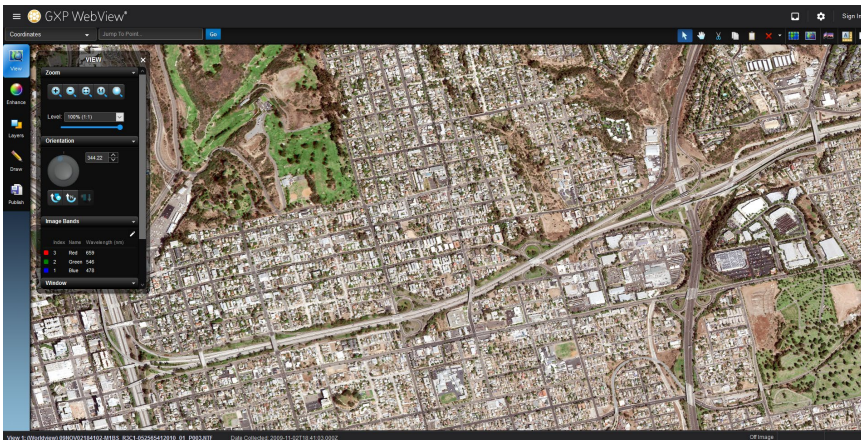
GXP WebView enhancements

- The middle mouse button will now roam when pressed
 - The further away the cursor is from center will dictate the roam speed
 - The default cursor has been changed to be the Select tool
- A new set of default templates have been included in GXP WebView



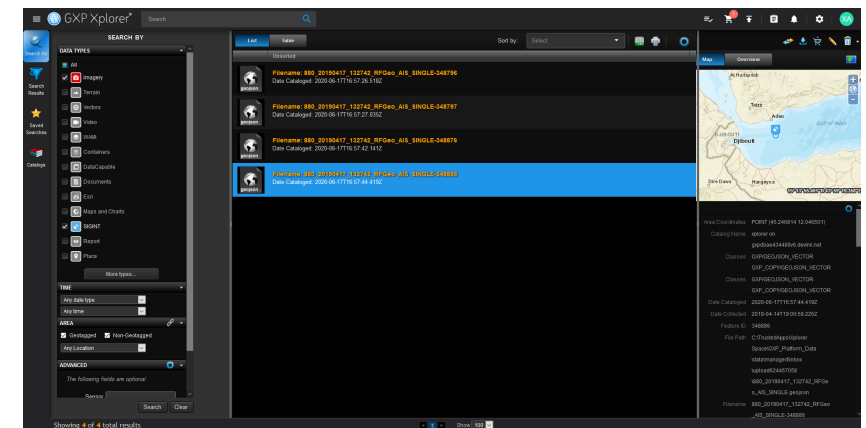
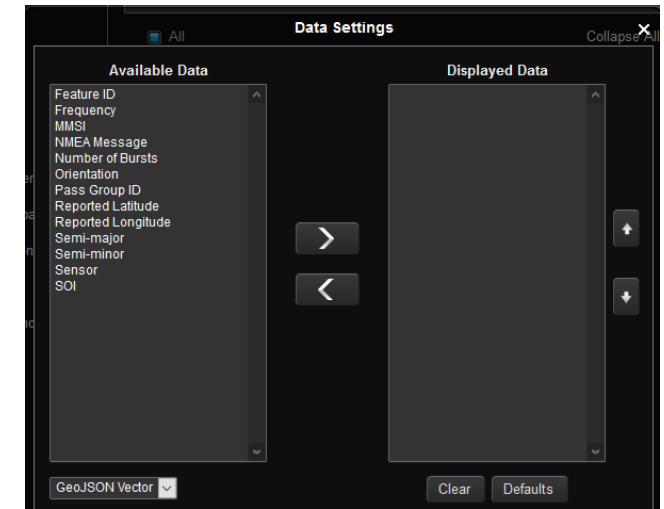
Band Selection in GXP WebView

- Users can now select any band to display in the Red, Green, and Blue channels for display in GXP WebView
 - Accessed from the View menu flyout
 - Users can also select any individual band to be displayed as grayscale



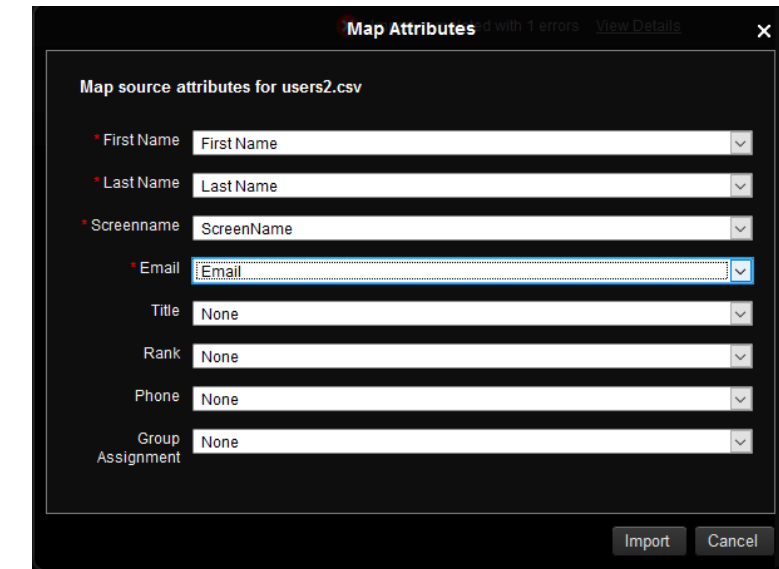
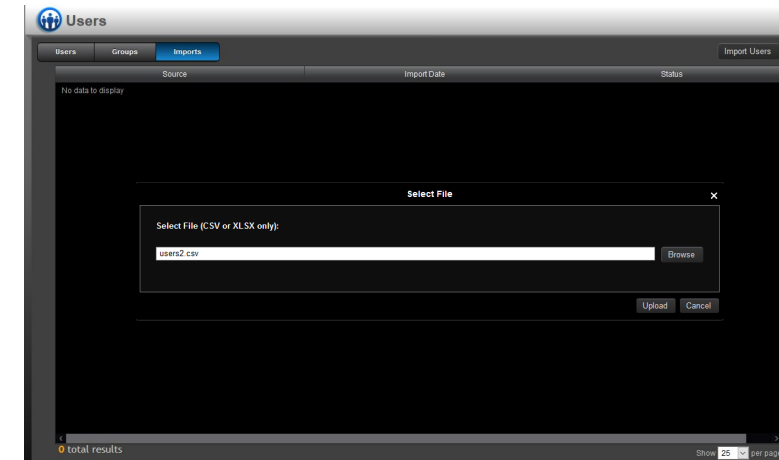
SIGINT search and discovery

- GXP Xplorer can now catalog and discover various types of SIGINT data
 - HawkEye 360 (GeoJSON)
 - Tactical SIGINT Data Format (TSDF)
- SIGINT has been added to the default data model
 - Users can search for containers (the overall main file) or vectors (the individual detections)
- The advanced metadata search allows users to query based on SIGINT specific metadata
- Users can download or (File Transfer Protocol) FTP the parent file directly or by selecting any detection in the catalog for further analysis



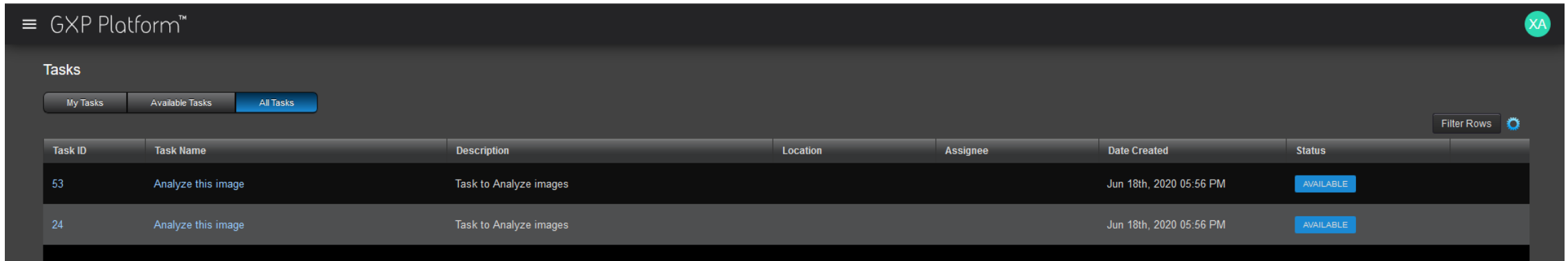
Bulk User Import

- Administrators can now bulk import users from a comma separated value (CSV) file or an Excel spreadsheet
 - Email must be configured on GXP Xplorer
 - This allows new users to be notified and reset their passwords to something unique
 - Accessed from the Admin Settings ... Users ... Imports tab ... Import Users
 - Administrators can then select a CSV or Excel file that contains columns that contain at least the minimum info to generate a user
 - Admins can map the columns in the CSV or Excel file to the appropriate fields
 - Required fields:
 - First Name
 - Last Name
 - Screenname
 - Email
 - Optional fields:
 - Title
 - Rank
 - Phone
 - Group Assignment (only one group is allowed currently)
 - If the group doesn't exist, it will be created
- Once users are imported, an email will be sent to all new users with a link where they can reset their password prior to logging in
- Any errors with the reason will be shown in the Imports tab
 - Users can click on View Details to see any errors and download the rows that caused errors to a CSV file



Workflow improvements

- Users can now delete a location from a Workflow during the creation process
- An All Tasks tab has been added to the Tasks window for Workflow Supervisors to see all tasks in the system regardless of state
- A Status column has been added to all tabs in the Tasks window to show the current state of any individual task



GXP Platform™

Tasks

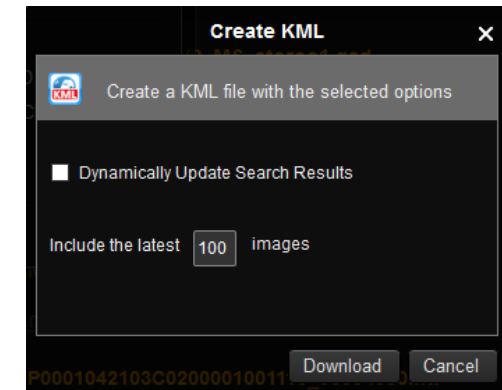
My Tasks Available Tasks All Tasks

Filter Rows

Task ID	Task Name	Description	Location	Assignee	Date Created	Status
53	Analyze this image	Task to Analyze images			Jun 18th, 2020 05:56 PM	AVAILABLE
24	Analyze this image	Task to Analyze images			Jun 18th, 2020 05:56 PM	AVAILABLE

Other significant enhancements

- Users can now import reference data in Excel format
- When running the Pre-Upgrade Utility, a pop-up confirmation screen has been added to notify users of completion
- The FTP Conversion preference for admins has been moved to Admin Settings GXP Xplorer Global Settings ... Export Options ... Image Conversion Options
- FTP Conversion now works on images from federated catalogs
- Delete and Purge Data Management tasks can now be configured to be run on demand
- The buttons for Rotate Up, Rotate North, and Rotate Shadows down have been added to the toolbar customization options in GXP WebView
- Additional Sensor Independent Derived Data (SIDD) metadata parsing
- Syncing with a Coalition Shared Database (CSD) can now sync using either product URL or Geospatial Imagery Access Services (GIAS) order
 - By default, GXP Xplorer will try product URL first then fallback to GIAS if that fails
 - This is configurable
- When generating KML from a saved search, users can now decide whether to make the query static or dynamic (KML superoverlay)



GXP Fusion™ v2.4.3 release enhancements

Gregg Goddard, Product Manager
June 19, 2020

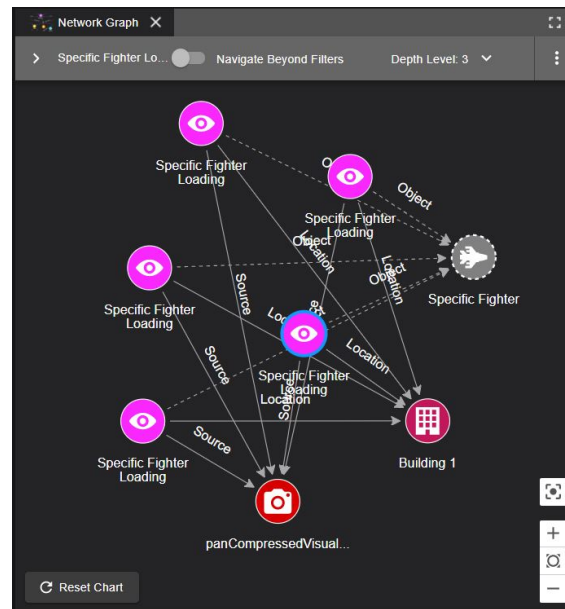


GXP Fusion™ v2.4.3 release enhancements

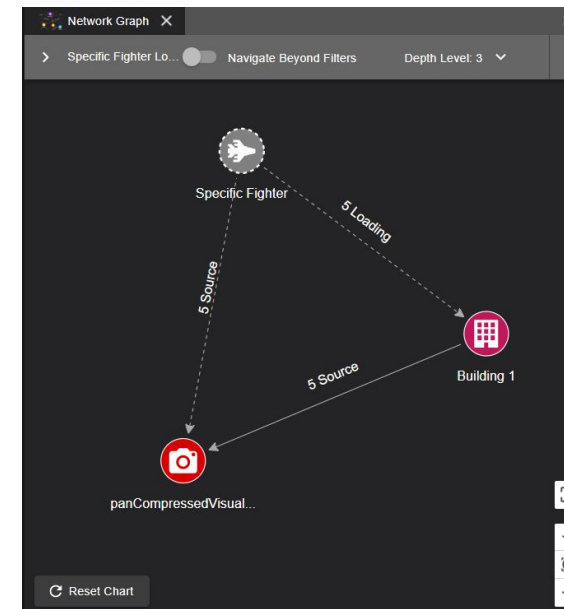
Enhancements for GXP Fusion include improvements to the Network Graph, Observations Panel, and Image Viewer.

Key enhancements:

- Added Download, Open-In, and more details to the Image Viewer
- Added Autofill of source information when making observation via Image Viewer
- Network graph includes Hide Link Nodes links option



Hide Link Nodes





Thank You

Nicholas Rosengarten
GXP Product Development
571.205.9397
Nicholas.Rosengarten@baesystems.com