



# Industrial Intelligence through GXP Xplorer®

Up-to-date industrial asset intelligence on facilities and projects for rapid situational and activity assessment

Powered by Industrial Info Resources (IIR)

Essential to the security, intelligence, and first responder communities, Industrial Intelligence data from GXP delivers information on a wide variety of industrial plants and critical infrastructure worldwide. This data set represents human-collected information acquired over decades from vital industries including energy, materials, chemicals, manufacturing, pharmaceuticals, bio-tech, food and beverage, and supporting infrastructure.

Updated daily, the Industrial Intelligence add-on for our GXP Xplorer® data management solution provides analysts with timely industrial facility data such as size, capacity, functional and capability details, maintenance, outages and readiness, resource consumption, output metrics, and personnel occupancy. This information can be visualized as searchable, attributed, geocoded data points in a table or overlaid on a map or image, enabling analysts to rapidly assess asset utilization, risk, and vulnerability, all without leaving the image under analysis.

Industrial Intelligence data is constantly updated by a staff of 500 researchers across the globe speaking 56 languages that re-validate and capture new activities and capital projects on a regular basis, including those with low-to-no media visibility. The information can be used to identify investments, expansion and contraction, on-hold and re-ignited projects, and industry evolution.

With industrial data readily available in the GXP Xplorer user interface, stakeholders from defense personnel to first responders will realize reduced intelligence cycles and enhanced situational assessments as industrial assets are seamlessly augmented with accurate descriptions, notations, and tags.

Industrial plants and construction projects from across the globe are grouped and available through Industrial Intelligence in 12 distinct categories.

## Power

» Electric Power

## Energy

» Terminals  
» Pipelines  
» Production  
» Alternative Fuels  
» Petroleum Refining

## Industrial Infrastructure

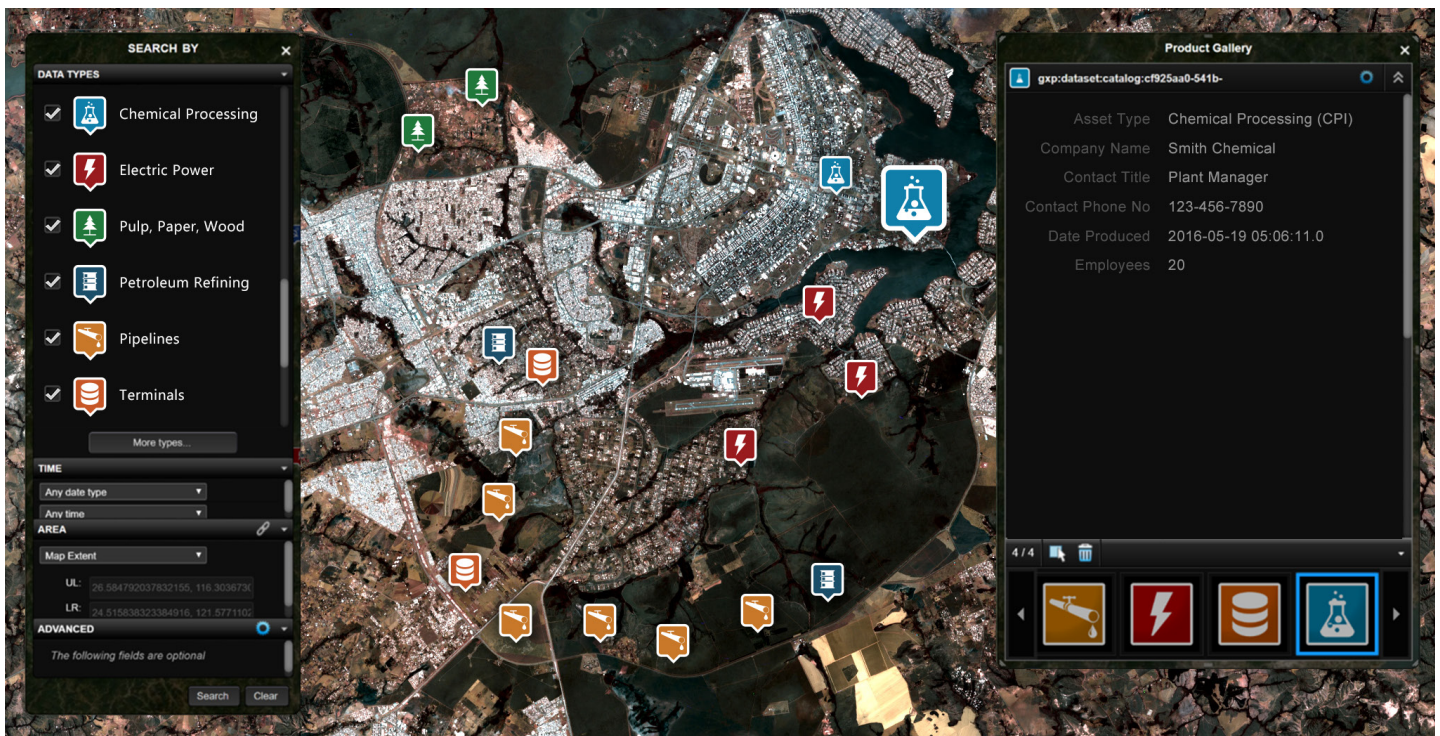
» Chemical Processing  
» Metals and Minerals  
» Pulp, Paper, and Wood  
» Food and Beverage  
» Industrial Manufacturing  
» Pharmaceutical and Biotech

**GXP**™ Geospatial solutions  
to ensure a safer world.



**Industrial Info  
Resources**





Company Name	Plant Name	Startup Date	Plant Status	Industry	Employees
Carlsberg Foods LLC	Century 18	1986-01-01 00:00:00	Closed	Food & Beverage	75
Wendy's	Production and Distribution	1986-01-01 00:00:00	Closed	Food & Beverage	140
Lipton's	Plant 112	1986-01-01 00:00:00	Closed	Food & Beverage	20
Capitol Power	Power Plant 04		Closed	Industrial Manufacturing	10
Power Programmatic	Generator 217	1976-01-01 00:00:00	Closed	Power	2
Gas Plant	Conference Plant 27	1986-01-01 00:00:00	Closed	Power	1
Electrica	Plant 1	1972-06-01 00:00:00	Closed	Power	1
Muler Food Distribution	South Bakery	2000-01-01 00:00:00	Closed	Food & Beverage	100
Powerlink	Quality Assurance	2000-01-01 00:00:00	Operational	Power	0
Paper LTD	Power Plant	2000-01-01 00:00:00	Operational	Power	0
Taylor and Smith International	Storage	2011-12-01 00:00:00	Cancelled	Power	20
Apex Tire	Storage and Distribution	1976-01-01 00:00:00	Closed	Industrial Manufacturing	100
Brookridge	Warehouse	1995-03-31 12:30:00	Operational	Power	0
Early Gas & Pipeline	Railway 85	1986-01-01 00:00:00	Operational	Power	0
Industrial Resources	Manufacturing	2002-06-04 13:30:00	Operational	Industrial Manufacturing	52
Lithuania LLC	Quality Assurance	1989-05-03 00:00:00	Operational	Industrial Manufacturing	1
Electric Mountain	Industrial Plant	2000-01-01 00:00:00	Operational	Power	0
Intercept Global	Production	2000-01-01 00:00:00	Operational	Power	0
Power Tye	Power Plant	2014-06-14 23:00:00	Operational	Industrial Manufacturing	10
Sanson International LTD	Distribution	2013-08-22 00:00:00	Closed	Industrial Manufacturing	45



Industrial Intelligence from GXP delivers a wide variety of information regarding factories and critical infrastructure including:

- » Facility owner/operator
- » Ultimate parent owner
- » Output product description
- » Employee count
- » Shifts per day
- » Fuel type
- » Operational status
- » Outages
- » Maintenance
- » Energy needs
- » Investment amount
- » Feed/Output capacities
- » Key equipment
- » Environmental air/land/water factors
- » Construction probability
- » Construction kickoff/slippage

*All data is delivered to GXP Xplorer by import from disc or via plug-in access to an Industrial Info Resources data server.*

Americas  
Tel 800 316 9643  
gxpsales@baesystems.com

Asia  
Tel +603 2191 3000  
gxpsales.asia@baesystems.com

Australia and New Zealand  
Tel +61 2 6160 4000  
gxpsales.apac@baesystems.com

Europe, Middle East, and Africa  
Tel +44 1223 370 022  
gxpsales.emea@baesystems.com