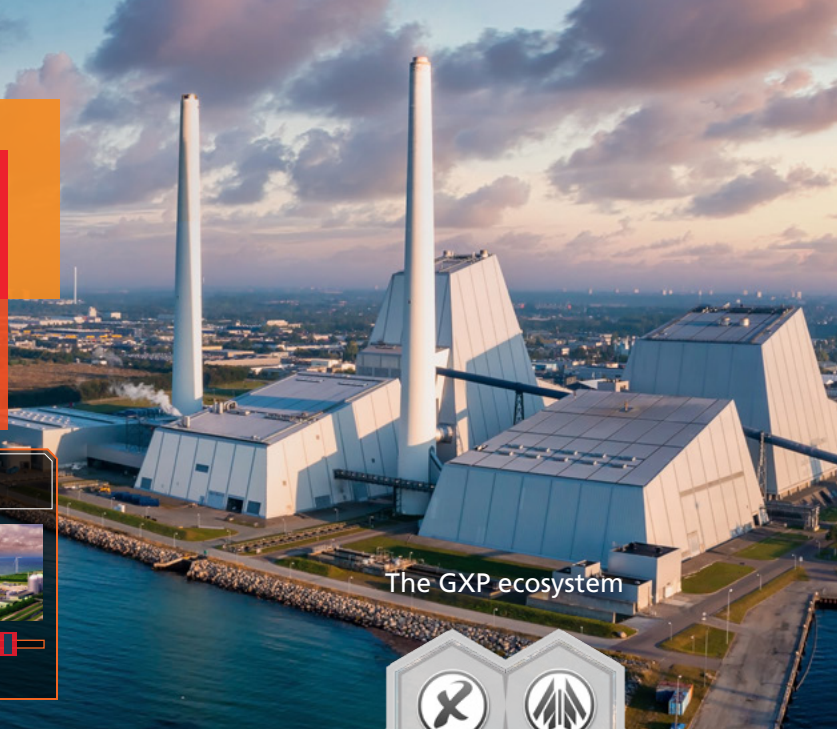


PowerSlice™

Prioritize and reorganize video for automated workflows, more efficient exploitation, and rapid summarization

Power station visibility and Ground Sample Distance (GSD) detected on the timeline
AUTOGENERATING 360° PRODUCT



The GXP ecosystem

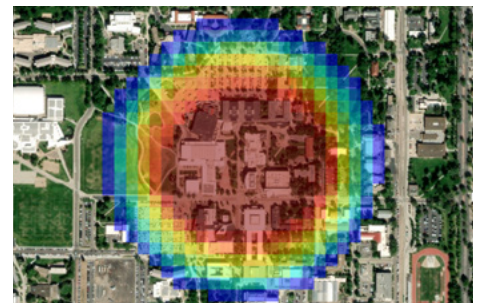


The PowerSlice™ tool from BAE Systems' Geospatial eXploitation Products™ (GXP®) is a revolutionary and patent-pending technology for video exploitation. Every location visible in a video is indexed along with key metadata, revolutionizing the way video content can be accessed, retrieved, and summarized.

Coming soon to the GXP product ecosystem (including SOCET GXP®, GXP InMotion®, and GXP WebView® software solutions), the PowerSlice feature enables users to:

- » Indicate a location of interest, then retrieve only the times when that location is visible in the video.
- » View these times prioritized by Ground Sample Distance (GSD), sensor perspective, detected movers, cloud cover, and/or custom mission-specific parameters.
- » Automate common workflows, such as 360° product generation, with the ability to fine tune before exporting to Microsoft® PowerPoint®.
- » See map-based data summarization of the entire video at a glance.

The video timeline is no longer the only way for users to find what they need. The PowerSlice tool significantly reduces the time spent on manual video seeking, speeding up product generation and saving hours in mission-critical settings.

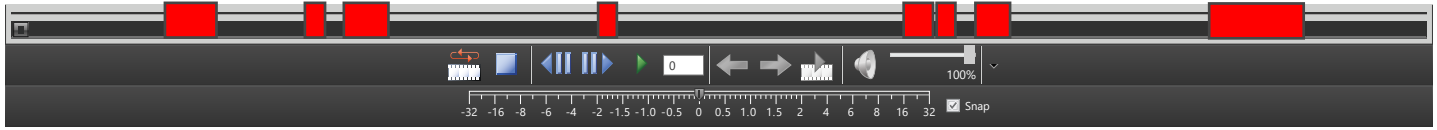


Imagery courtesy of Esri.
Heatmaps courtesy of L3Harris data.

The PowerSlice tool plots a heatmap of video coverage on a map view in SOCET GXP software, and can aggregate coverage and other statistics across multiple videos, thereby summarizing multiple missions at once.

Prioritize timeline clips

Powerslice software is able to create a heatmap of specific clips of a video (e.g. a building is visible), and can further highlight times with the best GSD.



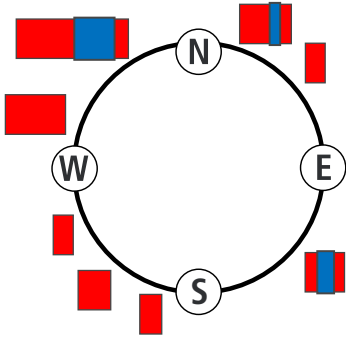
PowerSlice heatmap representing object visibility.



PowerSlice heatmap with additional GSD highlighting.

Automation of 360° product generation

Heatmaps can be displayed in multiple ways. Here, the heatmap is displayed by its azimuth relation to the four cardinal directions, providing a new automated workflow for 360° product generation.



Views of location organized by N/E/S/W azimuth

Circle view allows easy azimuth indexing

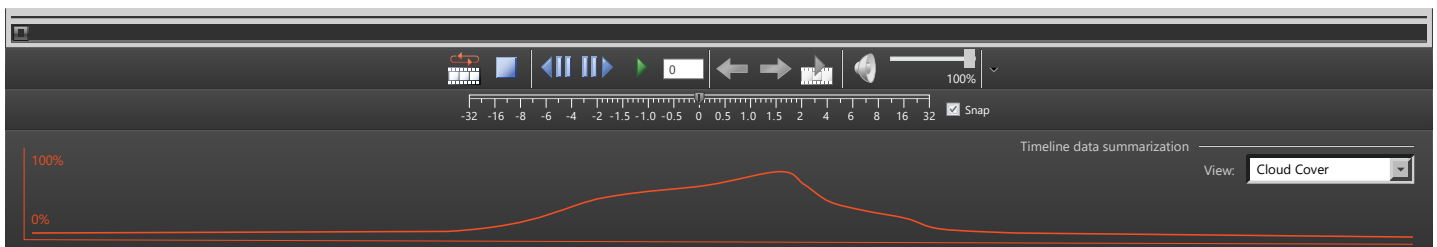
Each panel has a custom timeline showing just the times when that azimuth was available

Export directly to Microsoft PowerPoint after fine tuning

Imagery courtesy of L3Harris.

Summarize timeline data

The PowerSlice tool also provides timeline data summarization, showing a graph of the GSD, cloud cover, or other parameters for a particular location.



Americas
Tel 800 316 9643
gpxsales@baesystems.com

Asia
Tel +603 2730 9475
gpxsales.asia@baesystems.com

Australia and New Zealand
Tel +61 2 6160 4000
gpxsales.apac@baesystems.com

Europe, Middle East, and Africa
gpxsales.emea@baesystems.com