

GXP Xplorer®

Rapid discovery and dissemination of geospatial data across disparate systems

The GXP ecosystem



As the primary data discovery component of the GXP® product ecosystem, GXP Xplorer® searches your enterprise network for relevant files in existing data libraries, on shared network drives, and in an analyst's local shoebox. Geospatial, temporal, free-text, and advanced metadata searches can be performed across multiple data stores with a single query, eliminating the need to switch between systems.

Data types discoverable by either keyword or product attribute include:

- » Imagery, terrain, and LiDAR.
- » Features and shapefiles.
- » Maps and charts.
- » Raster and vector-derived products.
- » Full Motion Video (FMV) and Wide Area Motion Imagery (WAMI).
- » Motion tracks and events.
- » Documents, spreadsheets, and slide presentations.

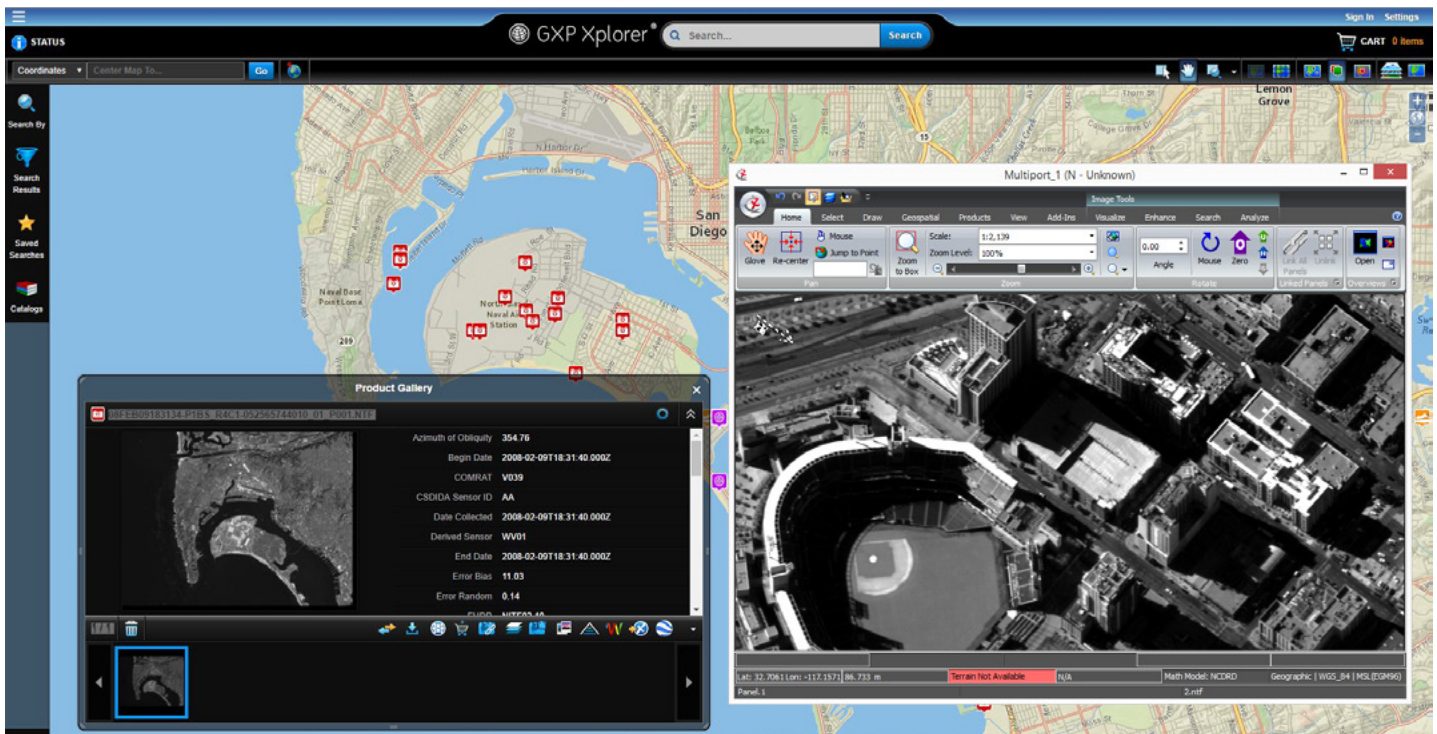
Identifying files without moving them, GXP Xplorer creates an online catalog while delivering geotagged search results graphically on a map and textually within an attribute list, even alerting users to new content. Supplementing initial search results, users can add a variety of geospatial content layers, such as transportation routes, utility and communication systems, and building schematics, with the GXP Xplorer Layer Manager.

Reduce costly data search efforts

Analysts spend up to 50 percent of their time locating imagery and data across disparate systems, networks, and geographic locations.

Software solutions within the GXP product ecosystem streamline process workflows, increase productivity, and enable a more effective final product, saving both time and money for your organization!

- » Federated data discovery.
- » Catalog in place.
- » Visualized search results.
- » Content layers.
- » Browser-based interface.
- » Mobile applications.



Additional exploitation of geospatial data discovered through GXP Xplorer is enabled by solutions within the GXP product ecosystem including:

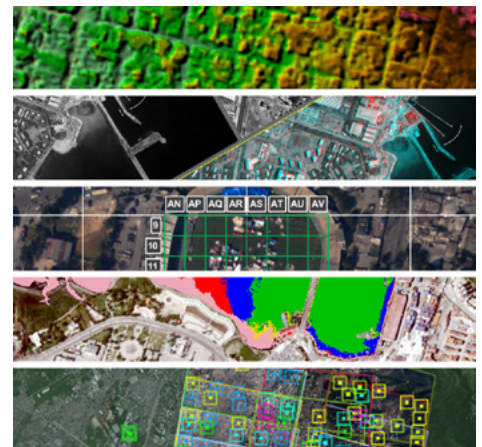
- » GXP WebView® (including Targeting and Object Based Production modules).
- » GXP Fusion™.
- » GXP InMotion™.
- » GXP OpsView®.
- » SOCET GXP®.

Leveraging these various ecosystem applications, users can quickly access mission-critical content, analyze relevant data, and develop intelligent analysis and reporting to enhance decision-making moving forward.

GXP Xplorer mobile applications

GXP Xplorer mobile applications deliver critical geospatial assets both to and from the field of operations. Built for remote personnel to view server products, and create and upload field data and reports, these mobile applications relay key tactical information between everyone connecting to the GXP Xplorer Server.

GXP Xplorer software's open-architecture standards provide an extensible and scalable environment, allowing developers to integrate GXP Xplorer capabilities with third-party applications and data store catalogs.



GXP Xplorer, and the entire GXP product ecosystem, is utilized by both all-source and image analysts at organizations across the world:

- » Defense forces, intelligence agencies, and homeland security.
- » Universities and research organizations
- » Systems integrators.
- » State, local, and regional governments.
- » Photogrammetry, mapping, and surveying agencies.
- » Transportation departments.
- » Natural resource management consultants.

All featured Imagery © 2022 Maxar Technologies.

Americas

Tel 800 316 9643
gxp.sales@baesystems.com

Asia

Tel +603 2730 9475
gxp.sales.asia@baesystems.com

Australia and New Zealand

Tel +61 2 6160 4000
gxp.sales.apac@baesystems.com

Europe, Middle East, and Africa

gxp.sales.emea@baesystems.com