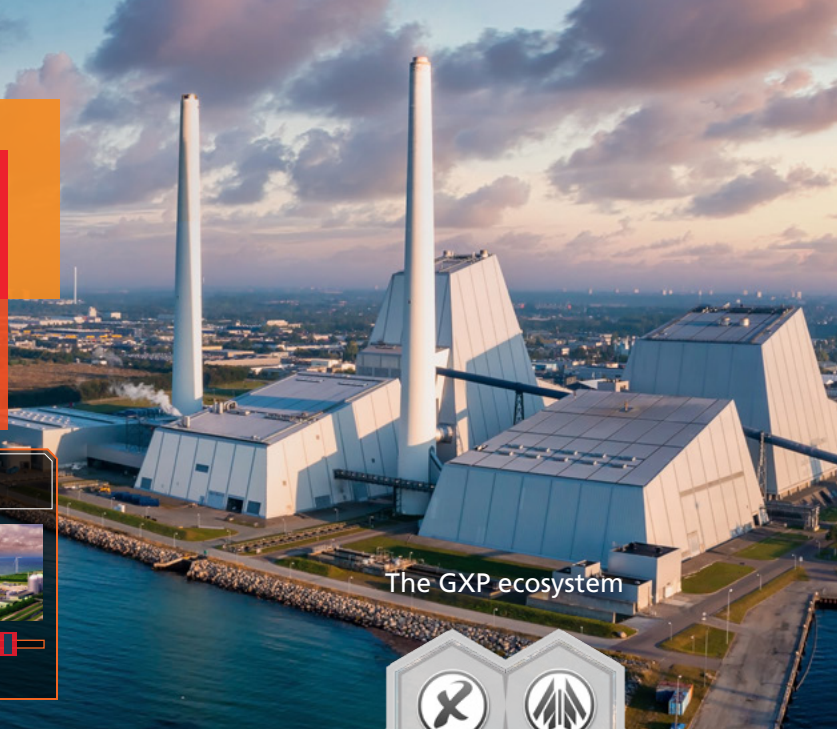


# PowerSlice™

Prioritize and reorganize video for automated workflows, more efficient exploitation, and rapid summarization

Power station visibility and Ground Sample Distance (GSD) detected on the timeline  
AUTOGENERATING 360° PRODUCT

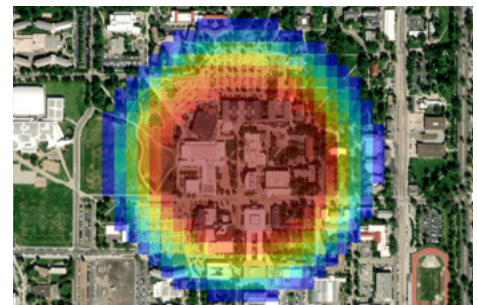
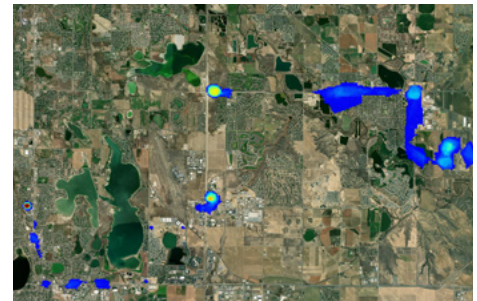


The PowerSlice™ tool from BAE Systems' Geospatial eXploitation Products™ (GXP®) is a revolutionary and patent-pending technology for video exploitation. Every location visible in a video is indexed along with key metadata, revolutionizing the way video content can be accessed, retrieved, and summarized.

Coming soon to the GXP product ecosystem (including SO CET GXP®, GXP InMotion™, and GXP WebView® software solutions), the PowerSlice feature enables users to:

- » Indicate a location of interest, then retrieve only the times when that location is visible in the video.
- » View these times prioritized by Ground Sample Distance (GSD), sensor perspective, detected movers, cloud cover, and/or custom mission-specific parameters.
- » Automate common workflows, such as 360° product generation, with the ability to fine tune before exporting to Microsoft® PowerPoint®.
- » See map-based data summarization of the entire video at a glance.

**The video timeline is no longer the only way for users to find what they need.** The PowerSlice tool significantly reduces the time spent on manual video seeking, speeding up product generation and saving hours in mission-critical settings.

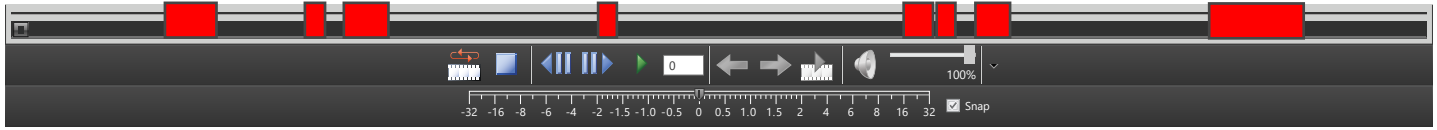


*Imagery courtesy of Esri.  
Heatmaps courtesy of L3Harris data.*

The PowerSlice tool plots a heatmap of video coverage on a map view in SO CET GXP software, and can aggregate coverage and other statistics across multiple videos, thereby summarizing multiple missions at once.

## Prioritize timeline clips

Powerslice software is able to create a heatmap of specific clips of a video (e.g. a building is visible), and can further highlight times with the best GSD.



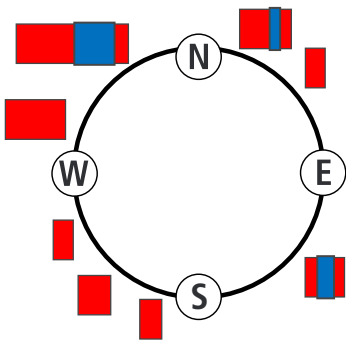
PowerSlice heatmap representing object visibility.



PowerSlice heatmap with additional GSD highlighting.

## Automation of 360° product generation

Heatmaps can be displayed in multiple ways. Here, the heatmap is displayed by its azimuth relation to the four cardinal directions, providing a new automated workflow for 360° product generation.



Views of location organized by N/E/S/W azimuth

Circle view allows easy azimuth indexing

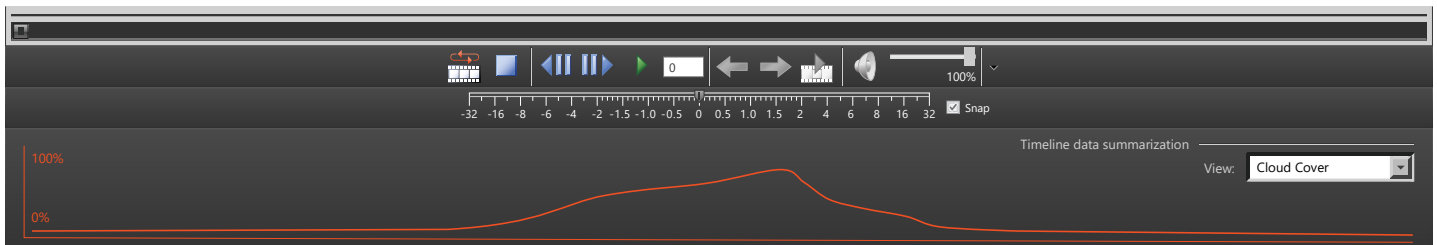
Each panel has a custom timeline showing just the times when that azimuth was available

Export directly to Microsoft PowerPoint after fine tuning

*Imagery courtesy of L3Harris.*

## Summarize timeline data

The PowerSlice tool also provides timeline data summarization, showing a graph of the GSD, cloud cover, or other parameters for a particular location.



**Americas**  
Tel 800 316 9643  
gpxsales@baesystems.com

**Asia**  
Tel +603 2730 9475  
gpxsales.asia@baesystems.com

**Australia and New Zealand**  
Tel +61 2 6160 4000  
gpxsales.apac@baesystems.com

**Europe, Middle East, and Africa**  
gpxsales.emea@baesystems.com