

# SOCET GXP®

Advanced geospatial exploitation and customized product creation combined into one comprehensive solution

## The GXP ecosystem



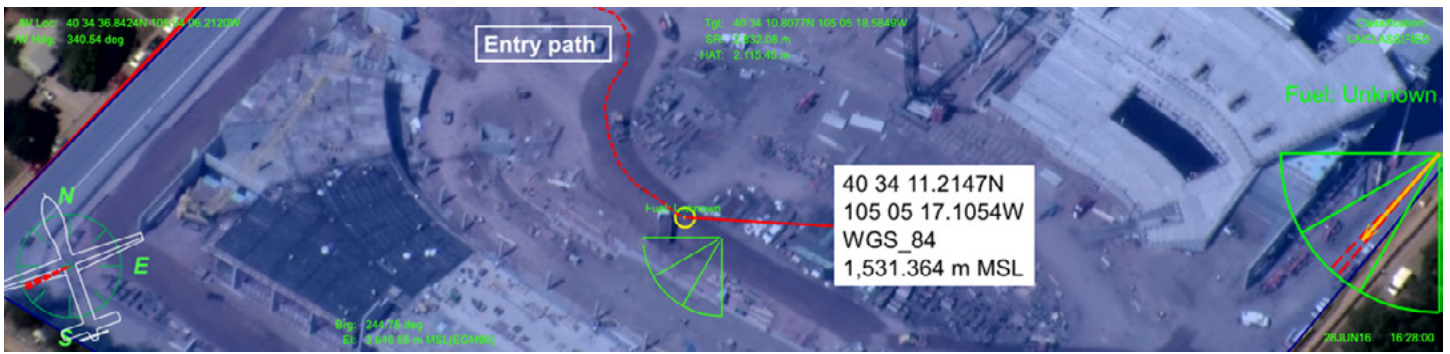
As the primary desktop application of the GXP® product ecosystem, SOCET GXP® ingests imagery from satellite and aerial sources enabling users to identify, analyze, and extract ground features while supporting rapid product creation. Image analysis, advanced photogrammetric techniques, remote sensing, and feature collection workflows are seamlessly combined into a single, effective solution that delivers the most advanced exploitation of geospatial data.

- » Image and video analysis and exploitation.
- » Customized reporting and product creation.
- » Intuitive and streamlined user interface.
- » Rigorous sensor modeling and accuracy.
- » Streaming enabled client.
- » Integration with enterprise systems.
- » Comprehensive Application Programming Interface (API).

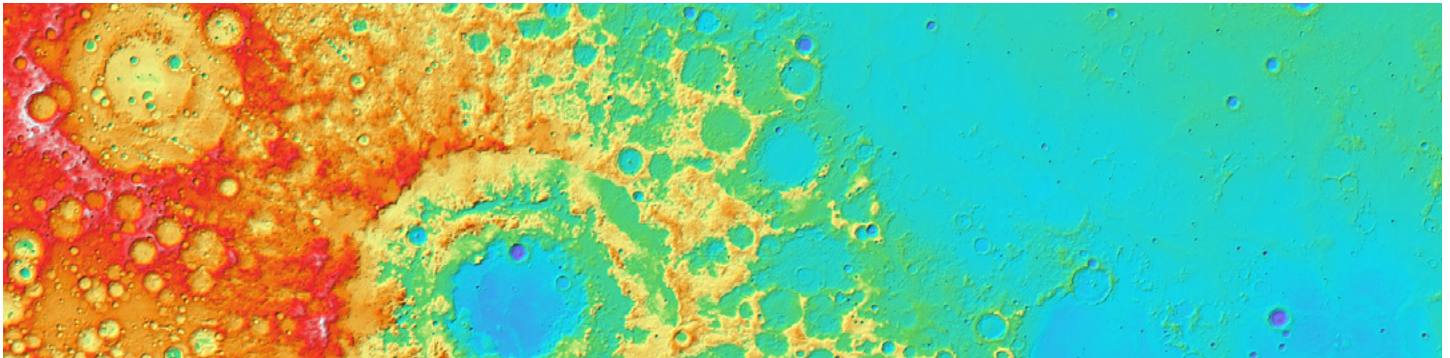
Leveraging SOCET GXP software along with other solutions in the GXP product ecosystem, such as GXP Xplorer®, users can discover and stream data (including full metadata) directly to a Multiport™ for more rigorous analysis. Users can then publish final products back to the GXP Xplorer catalog, allowing for subsequent discovery by the entire federated user base.

With SOCET GXP, analysts can leverage a wide variety of exploitation capabilities including:

- » Automatic feature extraction.
- » Image orthorectification.
- » Multi-sensor triangulation.
- » Automated terrain extraction.
- » Terrain analysis and editing.
- » Annotation and feature creation including direct connections to geodatabases.
- » 3-D modeling.
- » Multispectral (MSI) and hyperspectral (HSI) analysis.
- » Synthetic Aperture Radar (SAR) processing.
- » LiDAR visualization and exploitation.
- » Precise mensuration.
- » Precision targeting.
- » Tracking analytics.
- » Video exploitation.



Analysis of video surveillance on a construction site; Imagery courtesy of L-3 Communications, EO/IR Inc.



Simple connection to Open Geospatial Consortium (OGC®) reference imagery, such as lunar topography; Imagery courtesy of United States Geological Survey (USGS).



Automatic identification of aircraft at a major airport; Imagery courtesy of Video Inform.

SOCET GXP, and the entire GXP product ecosystem, is utilized by image, geospatial, and all-source analysts at organizations across the world:

- » Defense forces, intelligence agencies, and homeland security.
- » Photogrammetry, mapping, and surveying agencies.
- » Systems integrators.
- » State, local, and regional governments.
- » Transportation departments.
- » Natural resource management consultants.
- » Universities and research organizations.

SOCET GXP workflows reduce production times for the development of geospatial intelligence, eliminate the redundancy of multiple software packages, and maximize interoperability with other geospatial technologies including SketchUp, KML / KMZ, GeoPDF®, ArcGIS®, COLLADA™, and OpenFlight.

**Americas**  
Tel 800 316 9643  
gxp.sales@baesystems.com

**Asia**  
Tel +603 2730 9475  
gxp.sales.asia@baesystems.com

**Australia and New Zealand**  
Tel +61 2 6160 4000  
gxp.sales.apac@baesystems.com

**Europe, Middle East, and Africa**  
gxp.sales.emea@baesystems.com