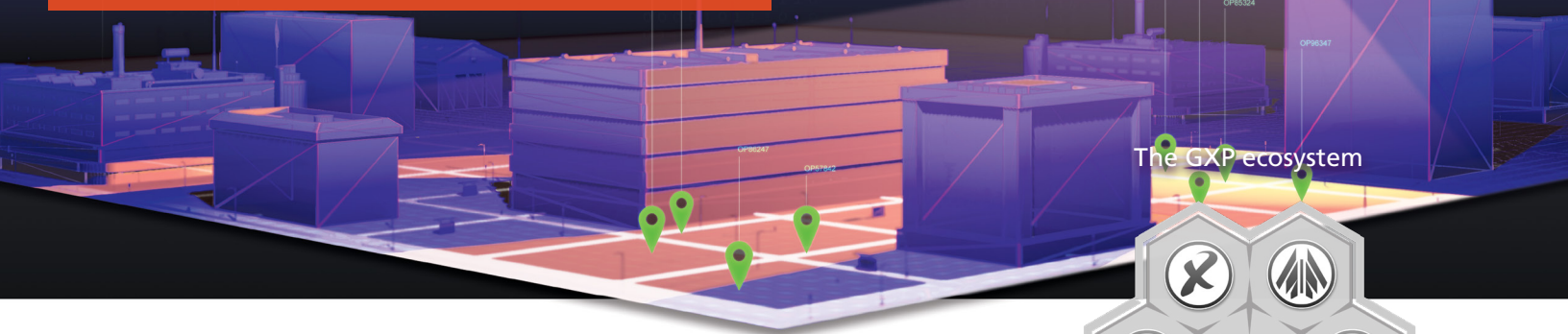


# GXP OpsView®

Ensuring safety and security through advanced operational planning and incident response



Whether for security operations, crisis response, or advance planning for an emergency situation, GXP OpsView® software delivers the primary tactical component of the GXP® ecosystem. Along with the accompanying GXP OnScene™ mobile application, GXP OpsView enhances comprehensive situational awareness through strategic planning tools, simplified communications, and a Common Operating Picture (COP).

Enabling mission command to effectively coordinate field operators in real time throughout an operation, event, or crisis situation, GXP OpsView provides:

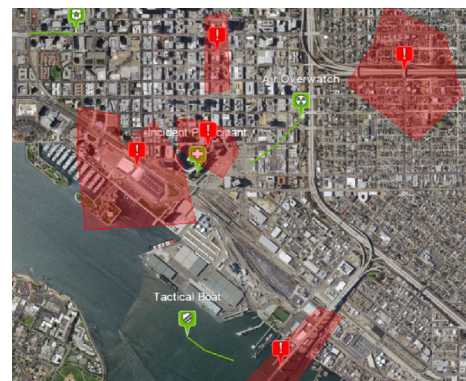
- » Visual representation of an operation or emergency action plan via Collaborative Response Graphics® (CRG®).
- » Real-time location sharing layered on top of the CRG.
- » Field data uploads including photo files.
- » Enhanced coordination and collaboration tools.
- » Rapid tasking and deployment of field personnel.

From an efficient dashboard view enabling strategic management of multiple operations, to a focused incident view supporting asset deployment and real-time communications, GXP OpsView software brings an unrivaled degree of command and control to operational planning and tactical response.



GXP OpsView, and the entire GXP software ecosystem, provides critical planning and response support for:

- » Active assailants, terrorist attacks, and hostage situations.
- » Emergency management and disaster relief.
- » Wildland firefighting and prevention.
- » Search and rescue operations.
- » Drug Interdiction and high-risk warrants.
- » Private security for corporate offices, industrial facilities, and events.



*Imagery courtesy of Esri® World Imagery.*



Imagery courtesy of EagleView Technologies & Pictometry Intelligent Images.

## Dashboard view for operations oversight

Providing a strategic view of your entire organization, the GXP OpsView Dashboard provides oversight into all active incidents in real time while providing access to historical incidents for reporting, review, forensics, and training.

- » COP of all active incidents via list and map views.
- » Content overlays on the map view via standards-based data sharing.
- » Rapid identification of all responders and available resources.
- » Simplified communication with field personnel.
- » Strategic viewpoint for executing operational strategy across all activity.



CRGs provide a COP and an accessible visual representation of an emergency action plan for all response personnel including:

- » Gridded Reference Graphics (GRG) overlaid onto current site maps.
- » Precise measurements of distance and elevation, degree of slope, and Line of Sight.
- » Critical data including staging areas, evacuation zones, vantage points, hazards, and roadblocks.
- » Real-time tracking of response personnel via mobile devices.
- » Data-agnostic support for imagery registration and overlays onto the plan.

## Incident Detail view for efficient response

The Incident Detail view allows users to drill down into a specific incident to see details regarding personnel, tasking, operation files, operation content, and communications.

- » Multi-layered CRG.
- » Teaming tools for rapid execution of Incident Command System best practices.
- » Real-time tracking with bread crumbs for previous asset location.
- » Enterprise-wide sharing of incident data.
- » Uploads of field data (including photos).

### Americas

Tel 800 316 9643  
gxp.sales@baesystems.com

### Asia

Tel +603 2730 9475  
gxp.sales.asia@baesystems.com

### Australia and New Zealand

Tel +61 2 6160 4000  
gxp.sales.apac@baesystems.com

### Europe, Middle East, and Africa

gxp.sales.emea@baesystems.com