

GXP Xplorer® Platform v2.5.4 release details

Presented by GXP® Product Development



The GXP ecosystem



Infrastructure

- New licenses are required when upgrading from GXP Xplorer Platform v2.4 or earlier.
- Upgrade is supported from GXP Xplorer v2.4.8+.
 - Reclassification must occur after upgrading (see release notes or System Admin Manual) from v2.5.2 or earlier.
- Federation is supported for GXP Xplorer v2.5.3+ (must be on the same version of the Data Model).
- Synchronization is supported for GXP Xplorer v2.4.8+ (see Release Notes for additional information).
- Data Reformatting Services (DRS) v5.6.08.R2 which contains Mensuration Services Program (MSP) v2.1.0.
- Core Software Development Kit (SDK) and Mensuration Services Program (MSP) is v2.1.1.

GXP Xplorer v2.5.4 updates



Aliases

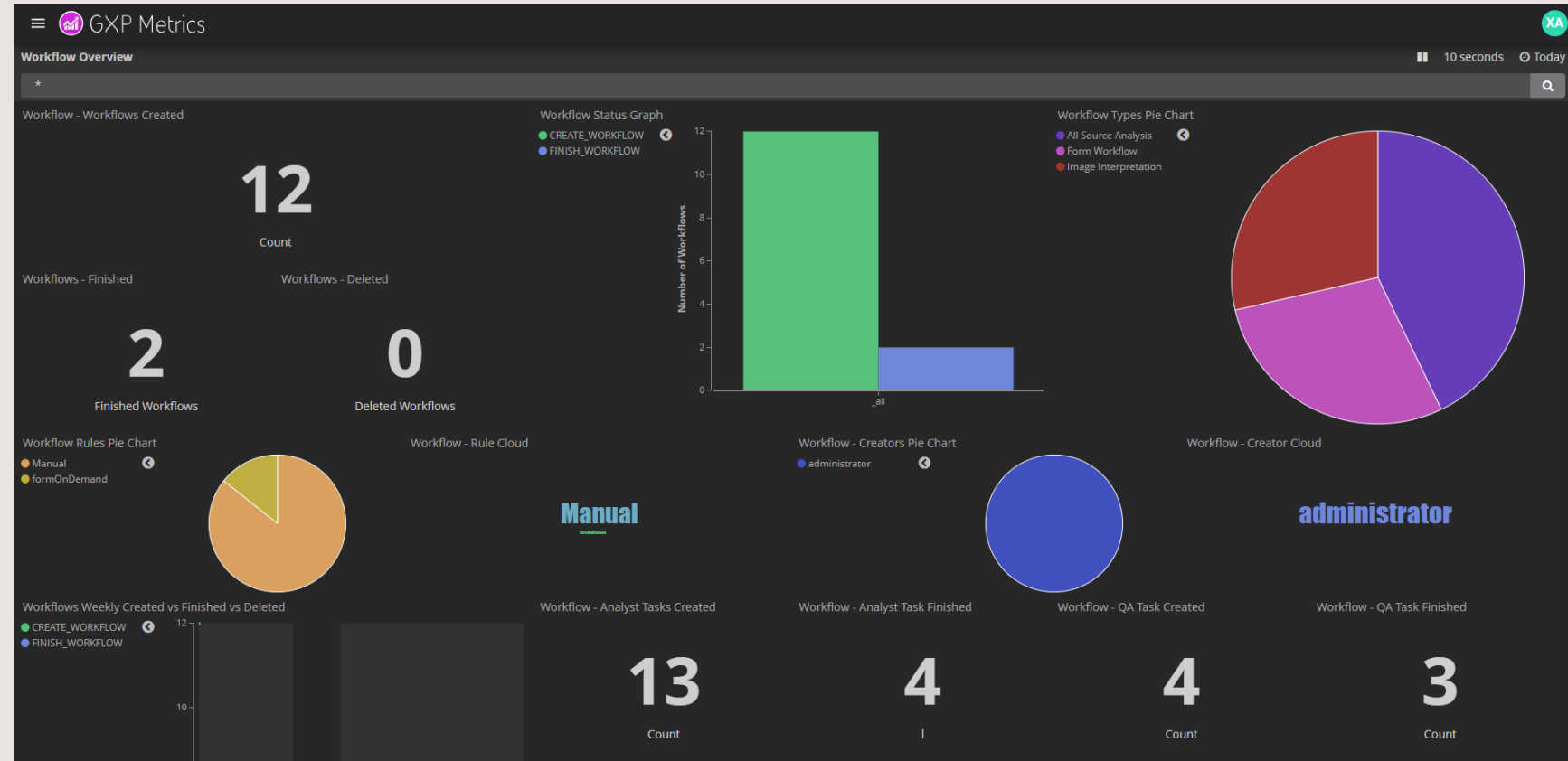
- Users can now set up Aliases to use when running queries.
 - For example, if a user searches “WorldView”, GXP Xplorer can search for many similar terms such as WV, WV01, WV02, and World View.
 - It can also be used to resolve common mistakes or misspellings. Users can search for “GXP Explorer” or “Explorer”, and an Alias can be made to resolve that search to the correct spelling of GXP Xplorer.
- Enabled in Administration Settings ...GXP Xplorer Application Settings ...Query Configuration ...Query Aliases.
 - Aliases can be defined within:
%GXP_PLATFORM_DATA%\config\aliases\query_aliases.txt
 - They are set with the following format:
 - WorldView = WV, WV01, WV02, and World View.
 - GXP Explorer and Explorer = GXP Xplorer.

```
#-----
# GXP Aliases
#-----
# Examples
# - Aliases
#   Terms configured to be aliases/synonyms can be set by listing them
#   on a single line separated by commas (','), For example :
#
#   Television, Televisions, TV, TVs
#   GB,gib,gigabyte,gigabytes
#
# - Alias Mappings
#   Terms can be configured to be overwritten with other terms, this
#   can also be used for spelling correction or even shortcuts.
#
#   ayaliases,alieses = aliases
#   WORLDVIEW = WV01, WV02, World View
#
# Aliases are case insensitive
#-----

WV01, WV02 = World View
Plane = F-16,F-12,F-11
```

Workflow Metrics

- A new Workflow Overview dashboard has been added to GXP Metrics.
- Ability to track when workflows are created, deleted, finished, type of workflow, who created it, when tasks are assigned or unassigned, and who the assignee currently is.
- This can be customized just like all other metrics dashboards to show the information users care about.



Industrial Info Resources (IIR) updates

- Users can now use the offline import of IIR data with the new Data Model.
 - Offline import will go directly to the local GXP Xplorer catalog and can be searched coincidentally with other data in the catalog.
 - To see search results users should add the Industrial Data View to the Search View Configurations.



Other significant enhancements

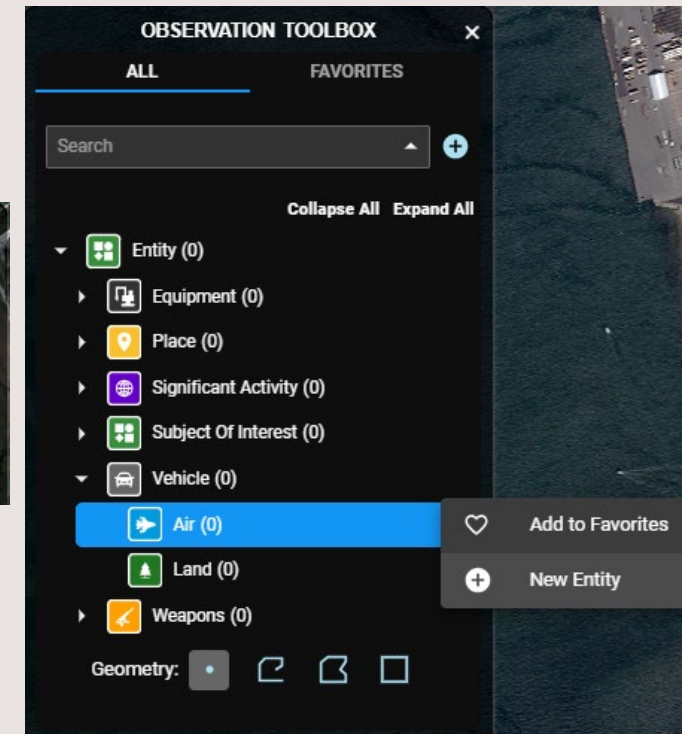
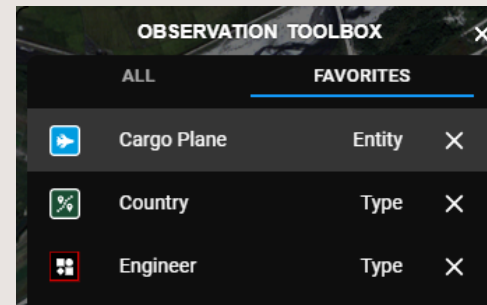
- The Planet® Labs connector has been updated to work with their new Application Programming Interface (API).
- Sensor Independent Complex Data (SICD) / Sensor Independent Derived Data (SIDD) sensor models have been added to the enterprise deployment.
- Prevent port conflicts with port 61616 on startup.
- Groups for Discretionary Access Control (DAC) now work with commas in the name.
- Bulk user import groups are given a default name so they can be easily edited.
- Disabled ability to change default username for PostgreSQL® in the Configuration Management tool.
- Additional filters have been added in the Data Model Editor (Coalition Shared Database (CSD), IIR, etc.).
- When generating Web Map Tile Service (WMTS) OGC® links from GXP Xplorer, users can now add a parameter to the URL to exclude the CRS 1 coordinate system: excludeCrs1=true
 - This is necessary to stream WMTS into ArcGIS® Earth.
- Logstash log files now follow similar rules to the karaf log (defaulted to cap at 10 MB and roll over up to 10 times per day).

GXP WebView v2.5.4 updates



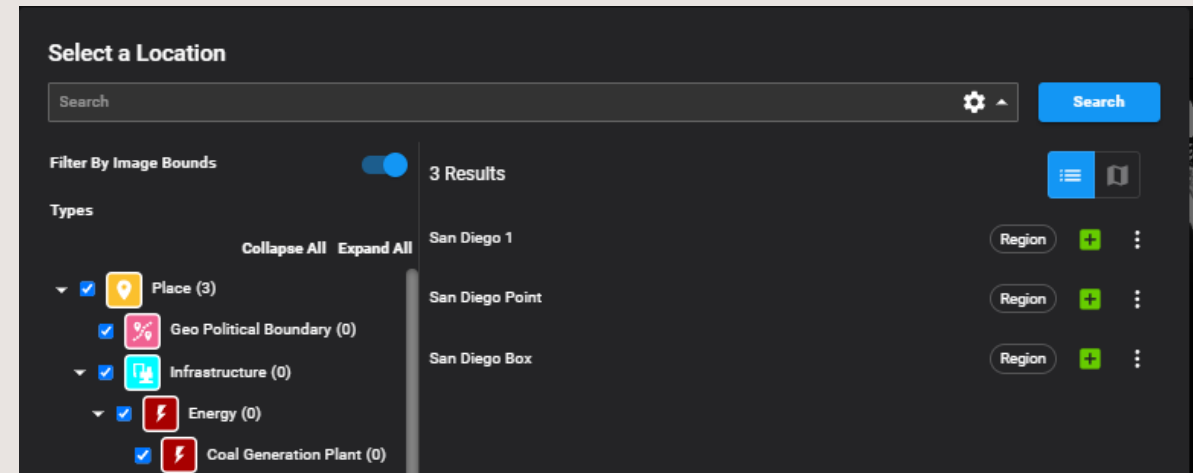
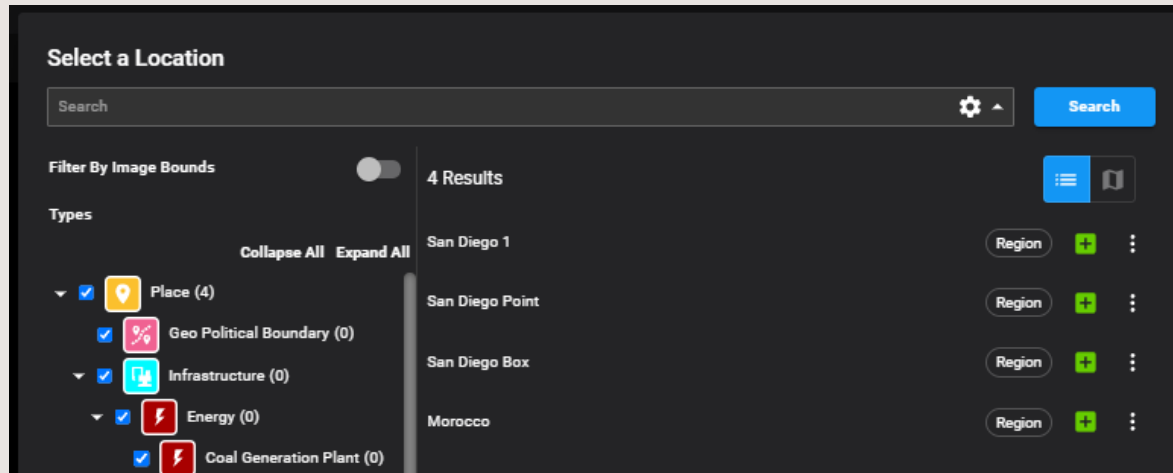
Structured Observation Management (SOM) improvements

- Observations are now enabled by default on installation.
- Users can now create a New Entity directly from the Observation Toolbox.
 - No longer have to create an Observation first in order to create an Entity.
- Entities can now be added to Favorites.
- The metadata for an Entity can be edited from the Observation Toolbox.
- The style and color of the Observation can now be used when drawing the graphic.



Structured Observation Management (SOM) improvements ...2

- Users can now choose to filter locations based on the Image bounds when making an Observation.



Historical Observation loading

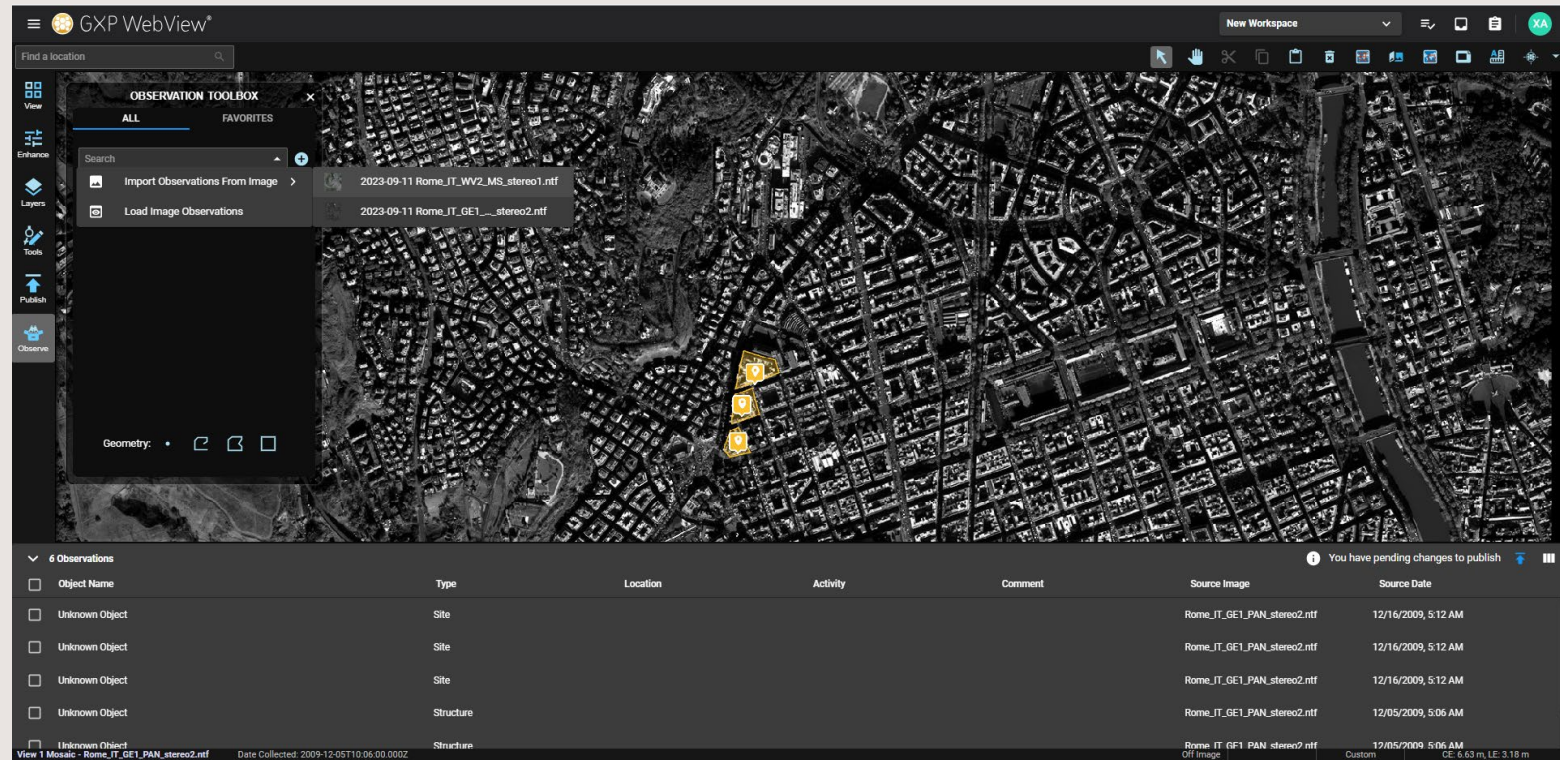
- Users can now load Observations directly in GXP WebView.
- Ability to load Observations that have been collected against and previously published from the current Image.
 - Load Image Observations.
 - This can be enabled in user settings or by default in Administration Settings ...Configuration Settings ...Observations.



Imagery © 2023 Maxar Technologies.

Historical Observation loading ...2

- Users can also load Observations collected over the same area that were extracted from other Images.
- Import Observations from Image.
- These will be imported as new Observations. Users can now update the metadata or delete them if no longer relevant on the current Image.
- The number of historical Images to display is configurable in user settings or in Administration Settings ... Configuration Settings ... Observations.



Imagery © 2023 Maxar Technologies.

GXP Fusion v2.5.4 updates

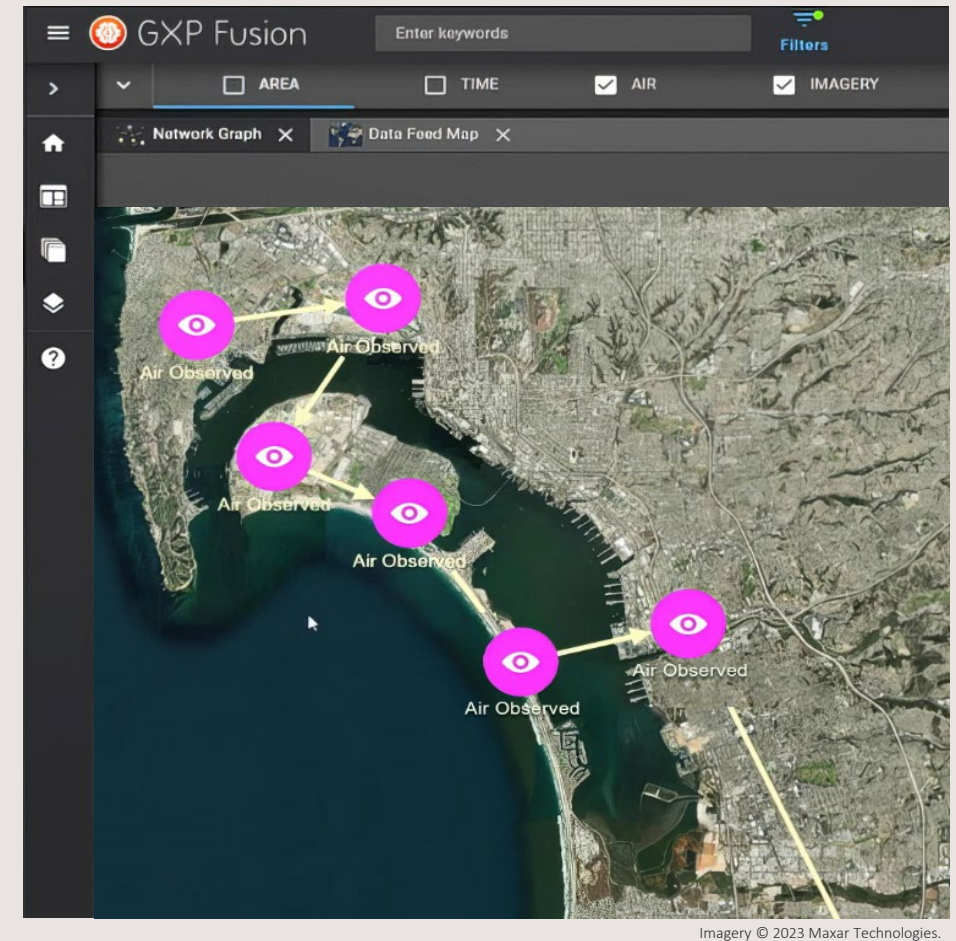


Structured Observation Management (SOM) updates

- New buttons to classify different options when creating an Observation.
 - Type – Type of Observation to be created.
 - Entity – Select an entity or create a new entity.
- Ability to create a site Observation.

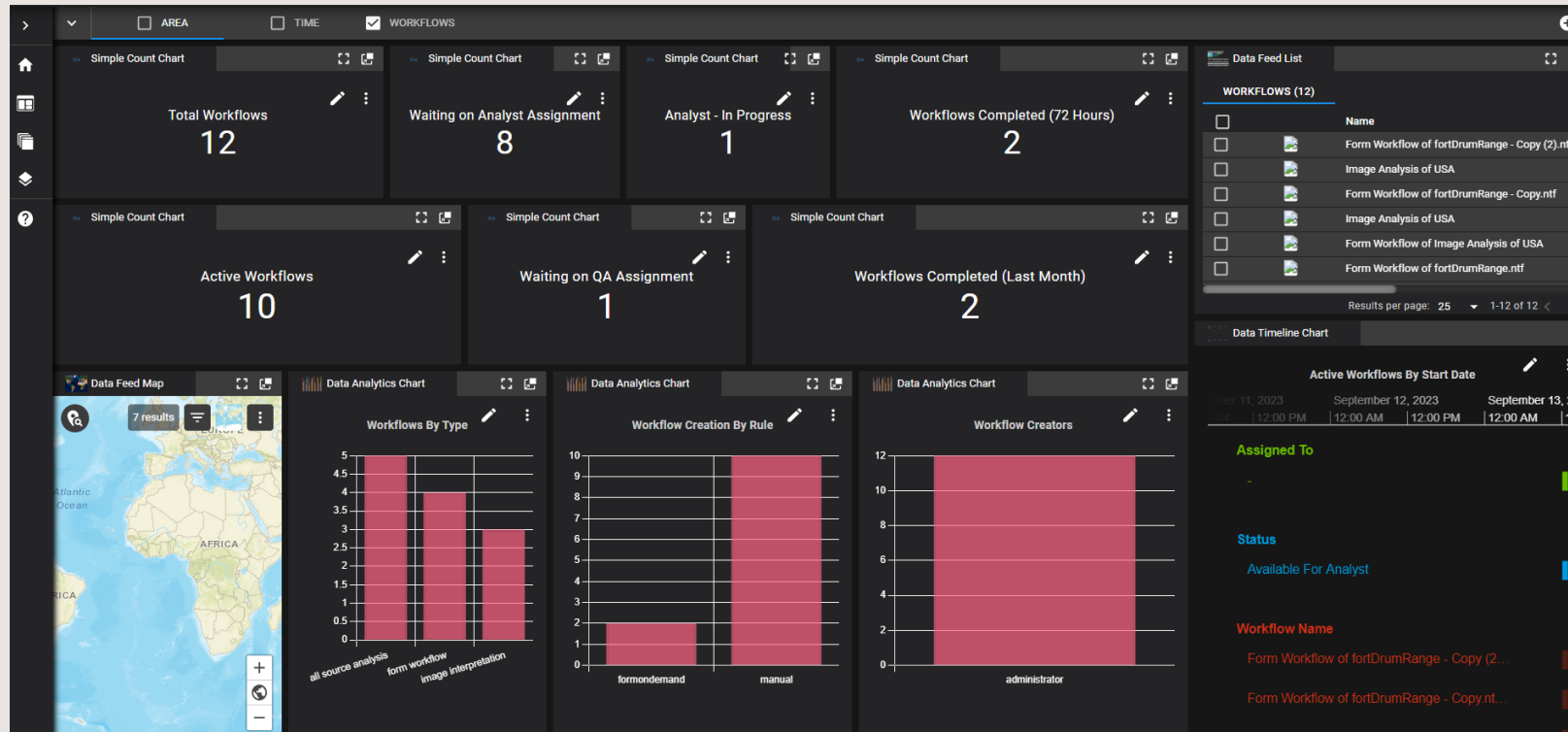
Network Graph overlaid on a Map layer

- Observations and entities from the Network Graph can be overlaid onto a Map background.
- Each Observation is connected with an arrow identifying the order in which the Observations occurred.



Workflow Metrics dashboard

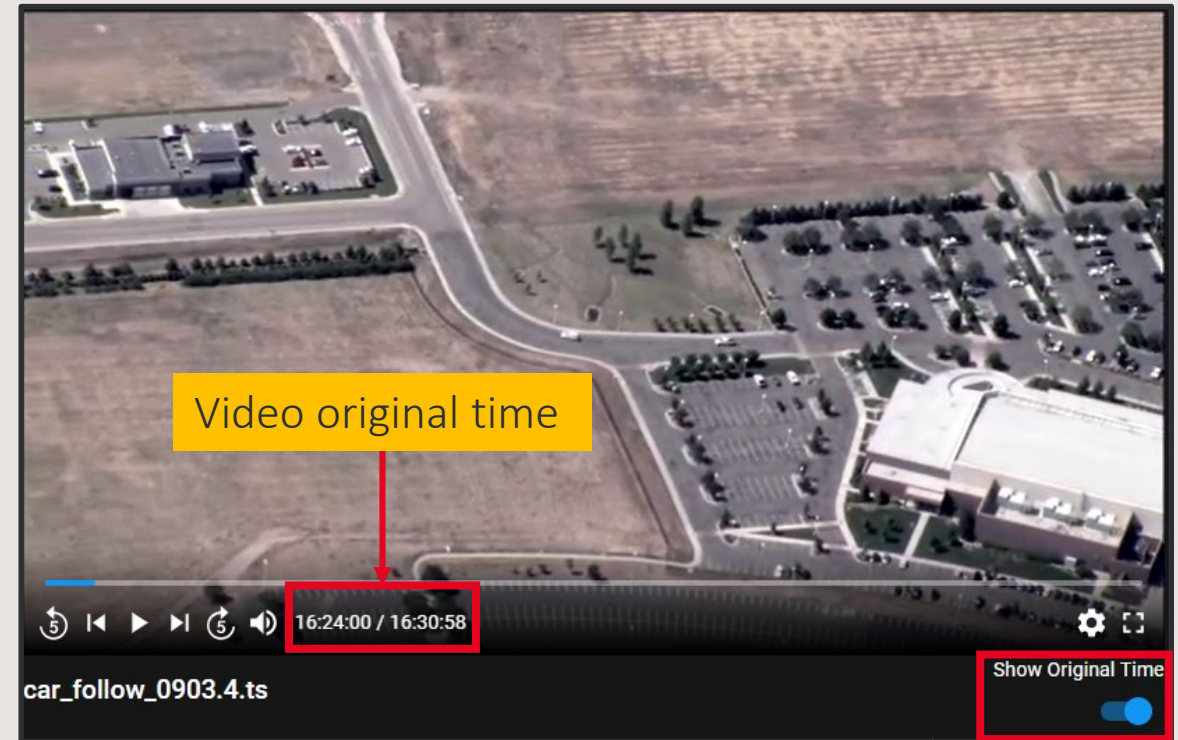
- Workflow Metrics can also be visualized in GXP Fusion.



GXP InMotion v2.5.4 updates



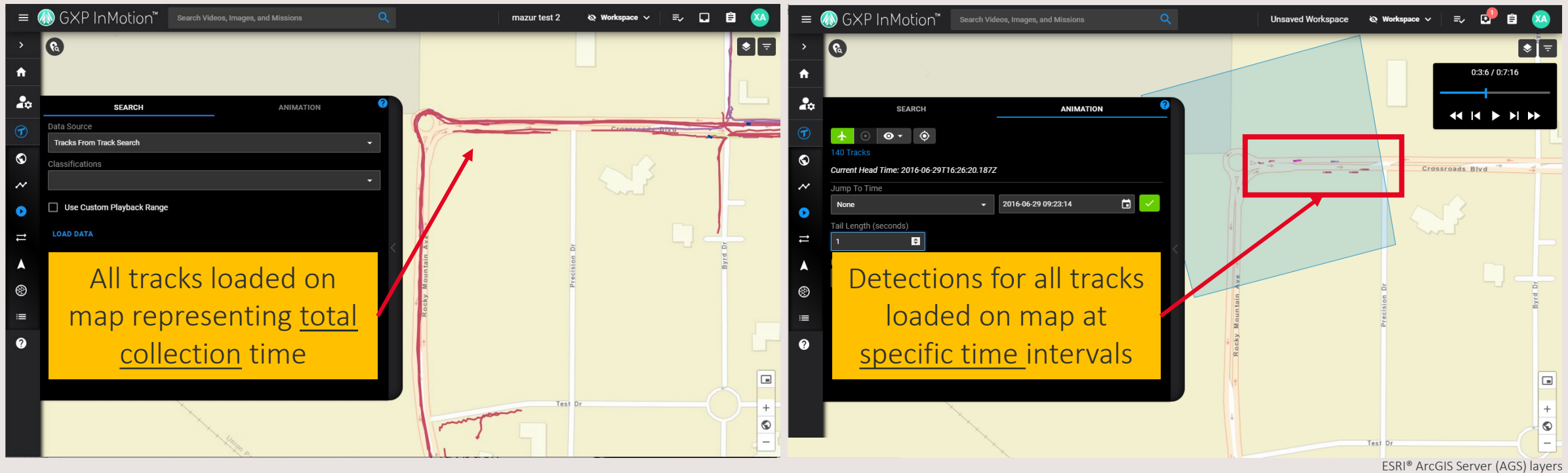
Display actual time in timeline of video player



Imagery of MX-15 videos over Ft. Collins, CO; Courtesy of L-3 Communications, EO/IR Inc.

- Previously, the GXP InMotion Web Video player displayed video based on the offset time of a video (time since the capture started). A customer requested that the original (or absolute) time a video was captured be displayed in the video timeline in addition to the video offset.

Track Playback panel



- New within the GXP InMotion Web Movement Intelligence (MOVINT) page is a Track Playback functionality. The new panel communicates with the Track panel to allow users to animate the currently loaded Track data set.

Track Playback Panel ...2

The screenshot displays the GXP InMotion™ interface. The main window shows a map with a green sensor footprint and a red box highlighting detections. The left sidebar contains the 'ANIMATION' panel with various controls. The top right corner features a timeline and animation controls. The bottom right corner shows the map's status bar.

Annotations:

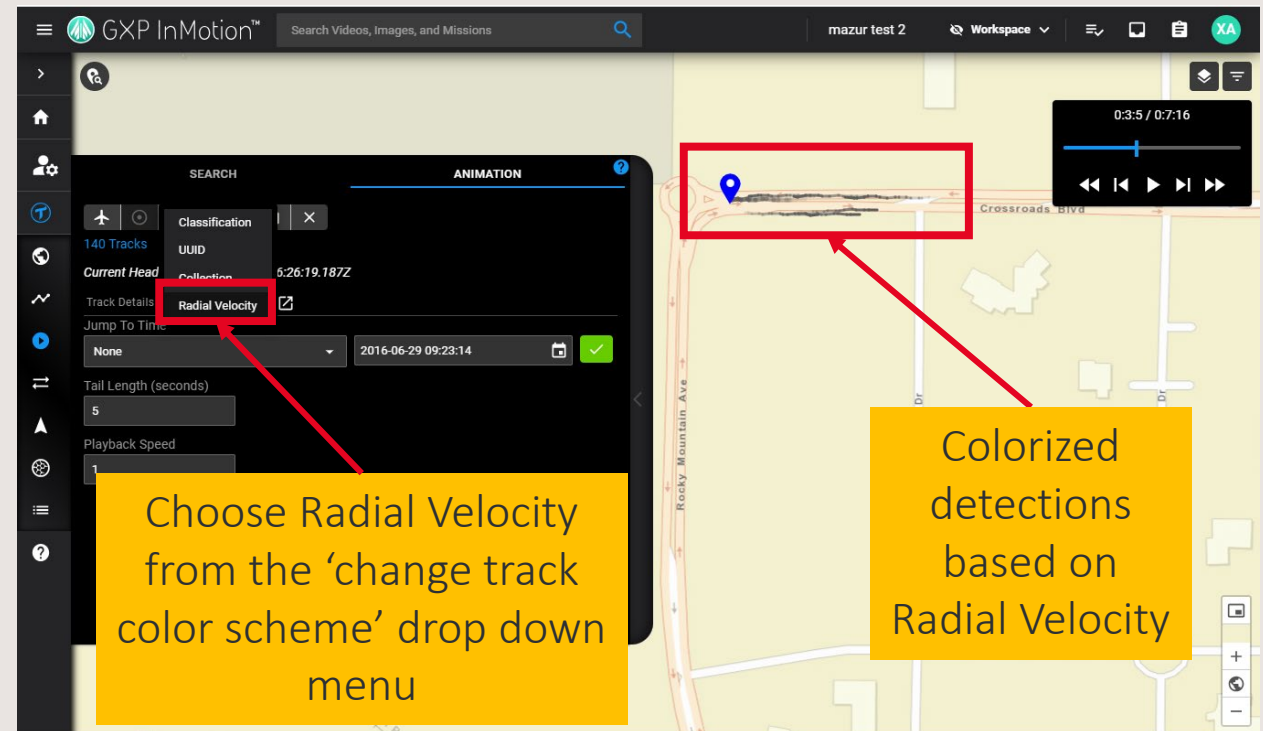
- Display sensor footprint:** Points to the green area on the map.
- Animation panel:** Points to the left sidebar.
- Adjust tail length of detection:** Points to the 'Tail Length (seconds)' control in the animation panel.
- Jump to specific times of interest:** Points to the 'Jump To Time' control in the animation panel.
- Adjust Playback Speed:** Points to the 'Playback Speed' control in the animation panel.
- Animation controls:** Points to the timeline and playback controls in the top right.
- Detections:** Points to the red box on the map.

Map Labels: Rocky Mountain Ave, Precision Dr, Byrd Dr, Test Dr, Crossroads Blvd.

Status Bar: 10.93.33.160/inmotion, ESRI® ArcGIS Server (AGS) layers

Radial Velocity: Colorize TrackPoints by Radial Velocity

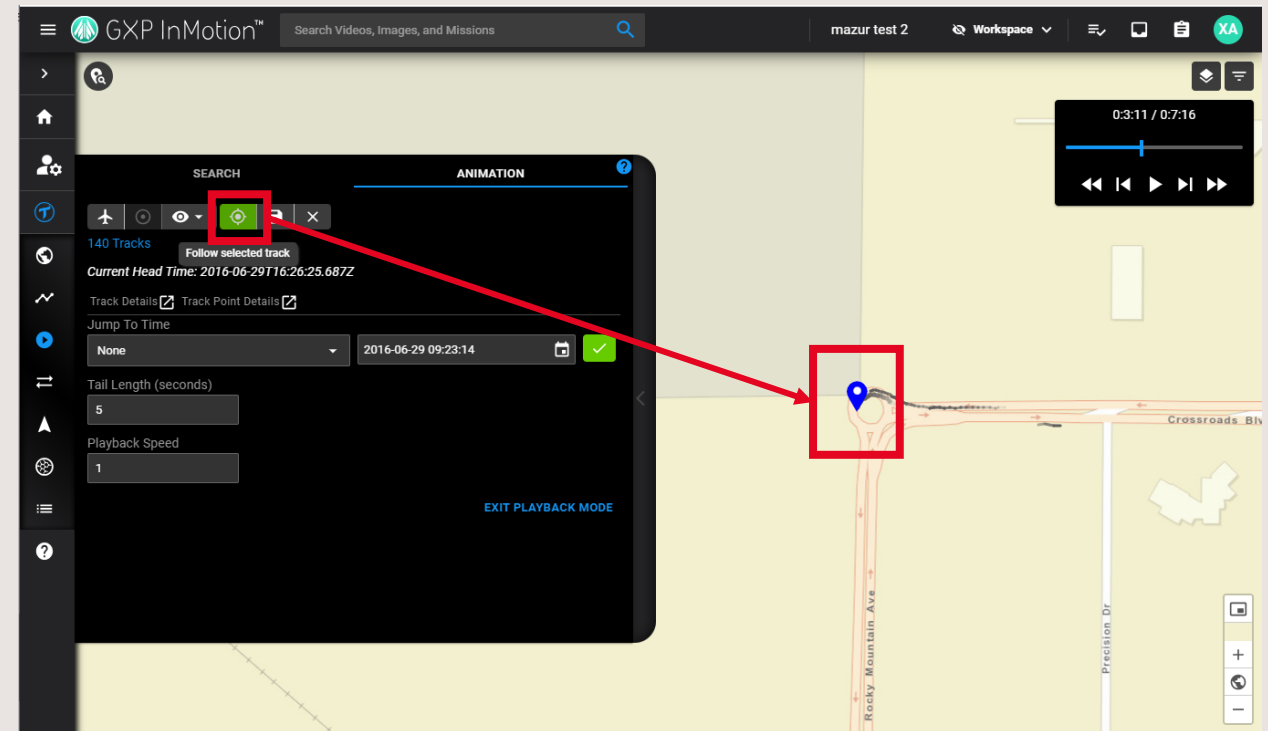
- Previously, GXP InMotion Web did not provide users any indicators for the direction a Track was headed relative to the sensor when displayed on a map.
- A request was made to color code TrackPoints (detections) based on the distance the point is from the sensor.
- By providing a colorization of the detections using Radial Velocity, GXP InMotion now provides users a clear indication of a TrackPoint's positive or negative Radial Velocity when viewing their data.



ESRI® ArcGIS Server (AGS) layers

Selected Track follow

- New in v2.5.4.0 is the ability to move the map along with a selected Track during Animation.
- A new button was added to the Animation panel to enable 'Follow selected Track'.



ESRI® ArcGIS Server (AGS) layers

GXP InMotion significant enhancements

- NATO Standardized Agreement (STANAG) 4676B collections now allows additional files to be added to a Tracking Analytics Software Suite (TASS) mission.
- It was reported that the platform did not allow for additional track files to be added and queued for track generation in a STANAG4676B collection. For example, if a user is copying files over periodically to the same monitored folder, ingest will correctly add the files to the same GXP Xplorer dataset. However, if track generation has already been queued for a previous subset of files in the collection, the metadata will contain a TASS mission universally unique identifier (UUID). In turn, this will prevent the ingest processor from queuing any subsequent files for track generation.
- Now, instead of creating new or additional missions, GXP Xplorer will now append new files to an existing TASS mission containing track data for STANAG4676B collections.
- Initiate track Playback without requiring a track search by using available collection data.
- Previously, the Playback controls required data to be loaded to enter track Playback mode. In this release, a feature was added to initiate track Playback without requiring a track search by using available collection data. A user can now select a collection and load all track points/Playback data. Adding this ability will allow for another access point for track Playback and animation for Ground Moving Target Indicator (GMTI) exploration.

Thank you