

GXP® Desktop v4.6.0 cumulative release enhancements

Evan Miller
GXP Product Development



GXP Desktop v4.6.0.0 release enhancements

Evan Miller
GXP Product Development



GXP Desktop v4.6.0.0 release enhancements

- This presentation contains the enhancements included in SO CET GXP® and GXP InMotion™ released December 19th, 2024.
- GXP Desktop software are full installations.

SOCET GXP v4.6.0.0 release enhancements



Infrastructure updates

- Added support for Microsoft Windows® 11.
- Removed LEAD video filter dependencies.

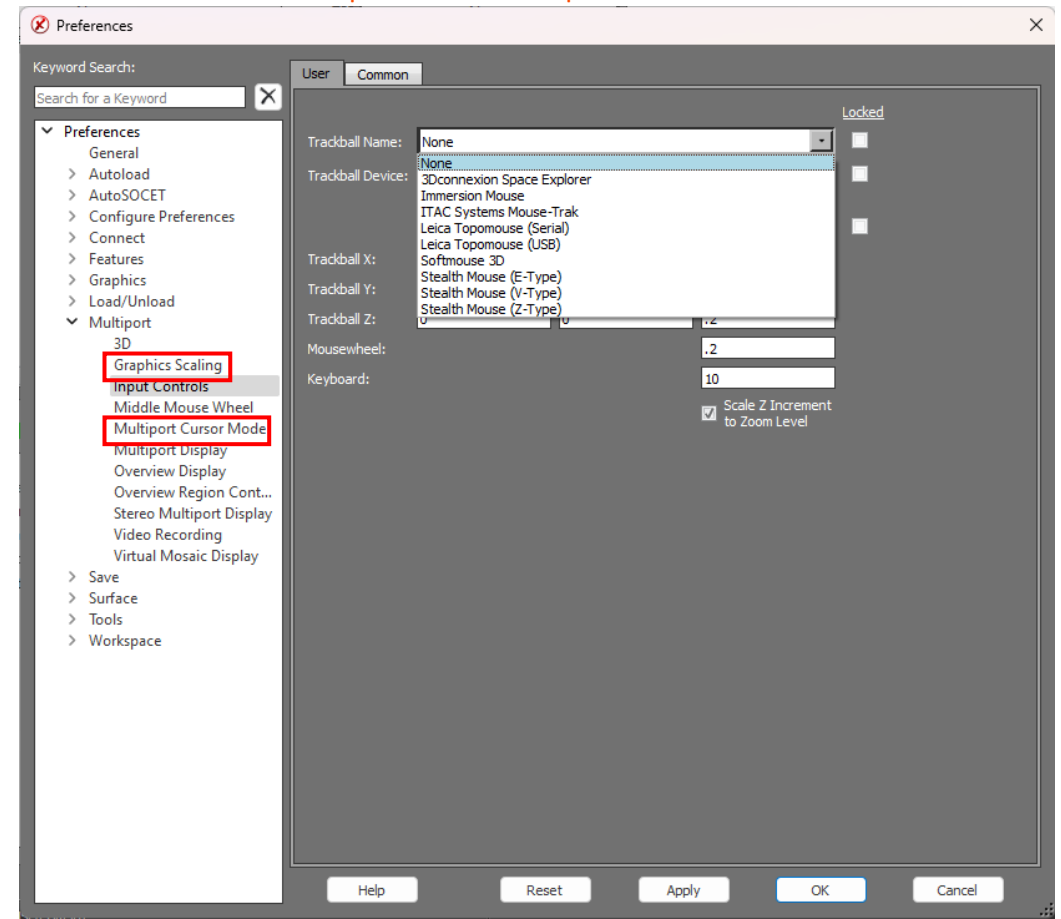
API updates

- Added the ability to set camera parameters in the 3D Multiport™.
- Removed WGS-84 dependencies.
 - Now the planetary community can use the API to make image to ground calls without having to do a conversion.
- Added the ability to toggle the 3D North arrow in a 3D Multiport.
- Updated JavaScript® API to support:
 - Jump to Point.
 - Set zoom and rotation.
 - Create graphics/update graphics.
 - Retrieve CE/LE.
 - Textbox support.
- Redesigned API queries to handle larger datasets to get returns quicker.
 - Example: 1-1000, 1001-2000, etc.

Trackball name preference

- We added trackball as a dropdown to allow users to quickly select their input type.

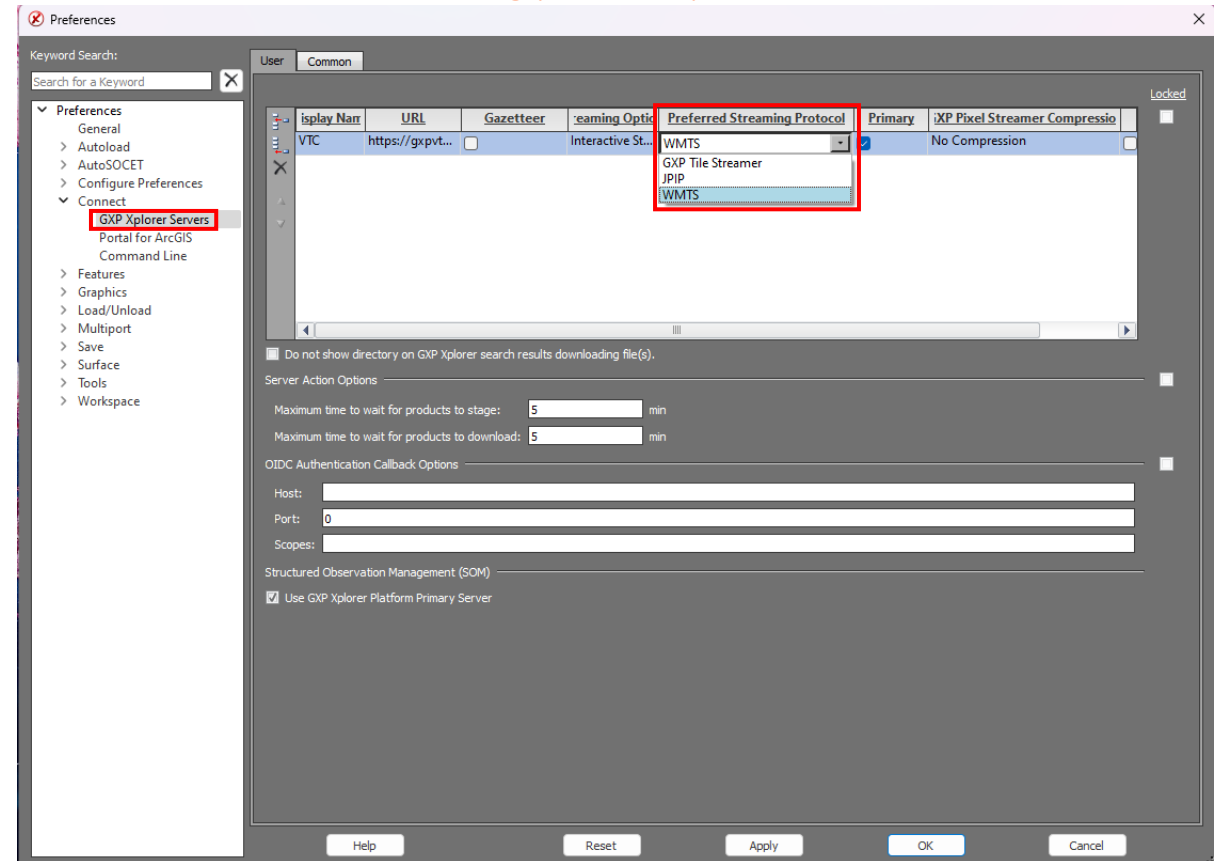
Input controls preference



Preferred Streaming Protocol preference

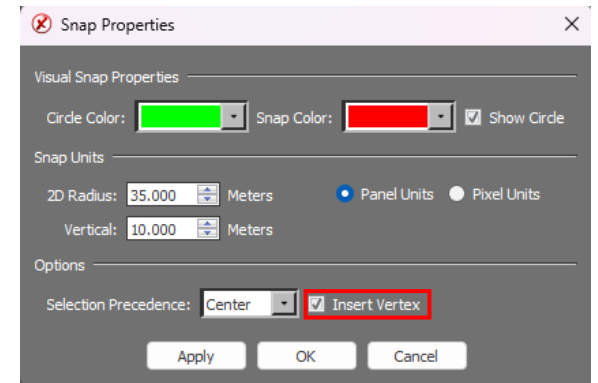
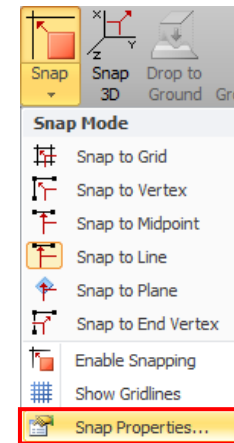
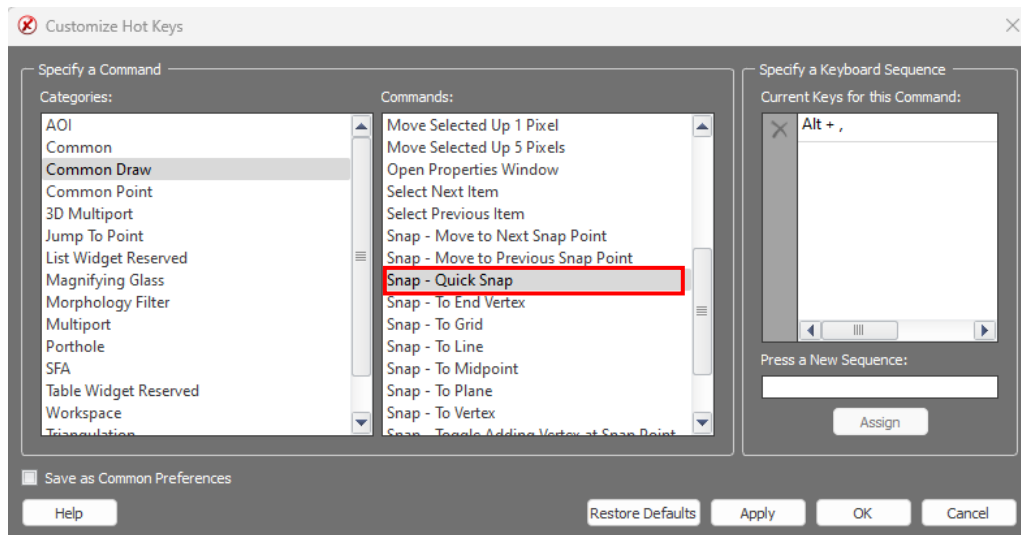
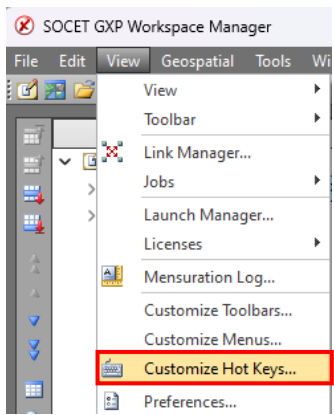
- Allows users to select how they want their imagery streamed into SOCET GXP from their GXP Xplorer® Platform server.

Streaming protocol preference



Quick Snap Hotkey

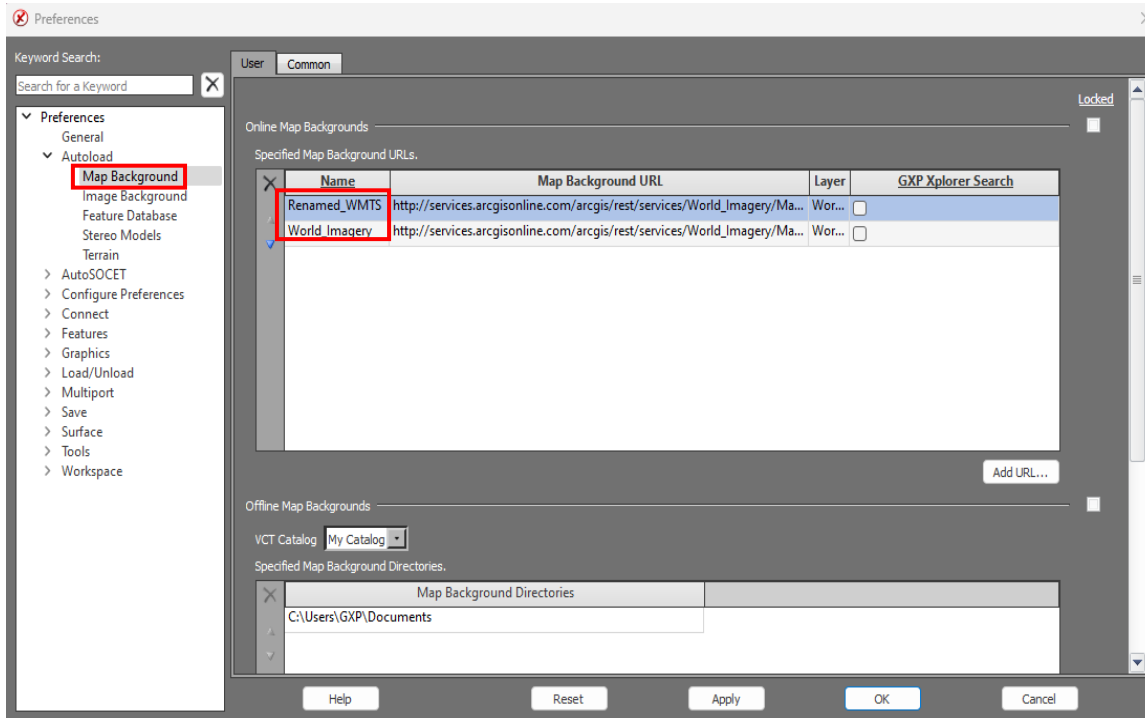
- Allows users to quickly snap to a point using a hotkey.
- Insert Vertex must be enabled.



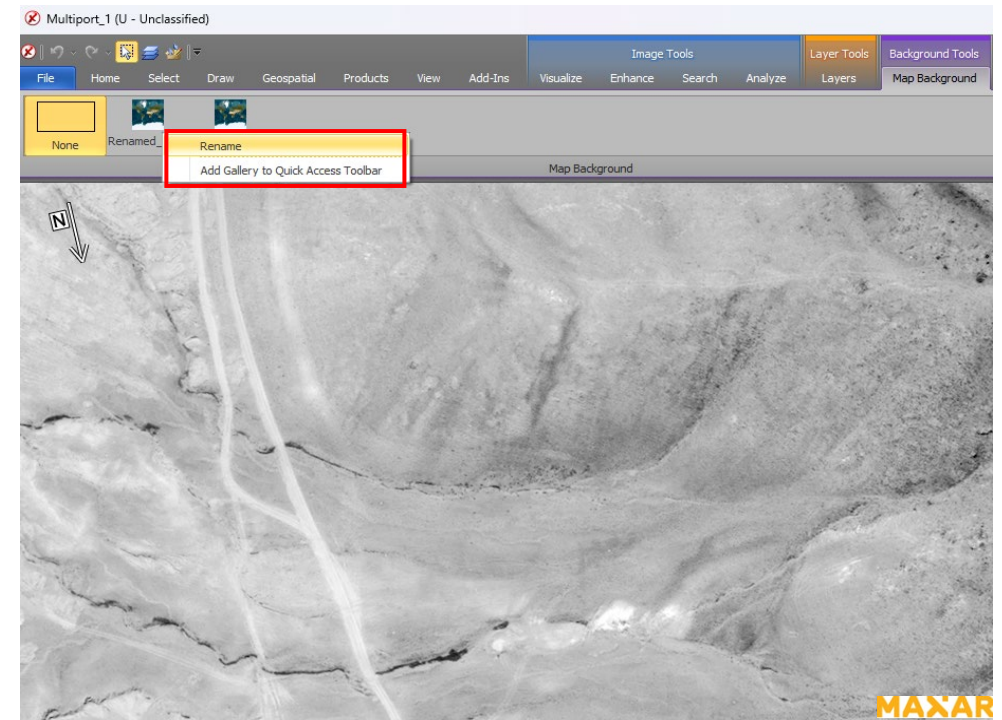
Map Background functionality

- Users can rename Map Backgrounds in Preferences and in the Multiport.

Map Background Preference



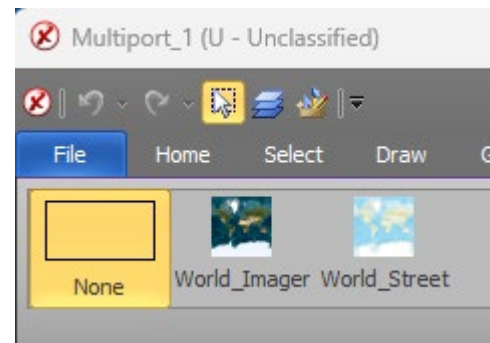
Map Background Rename from Multiport



Map Background thumbnails

- Map Backgrounds are now easily identified by their thumbnails in the Multiport.

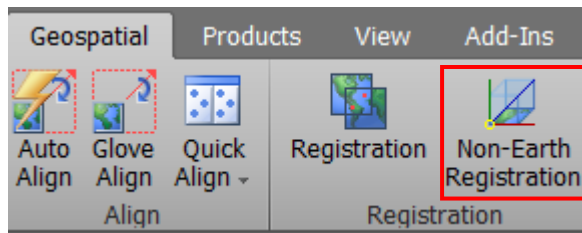
Map Background Thumbnails



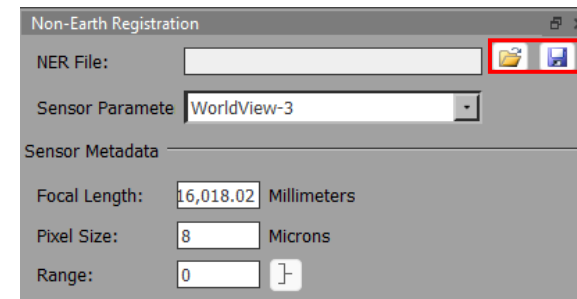
Non-Earth Registration (NER) load/save

- Allows users to load previously saved NER work.
- Enables users to save work prior to workflow completion.

NER button location



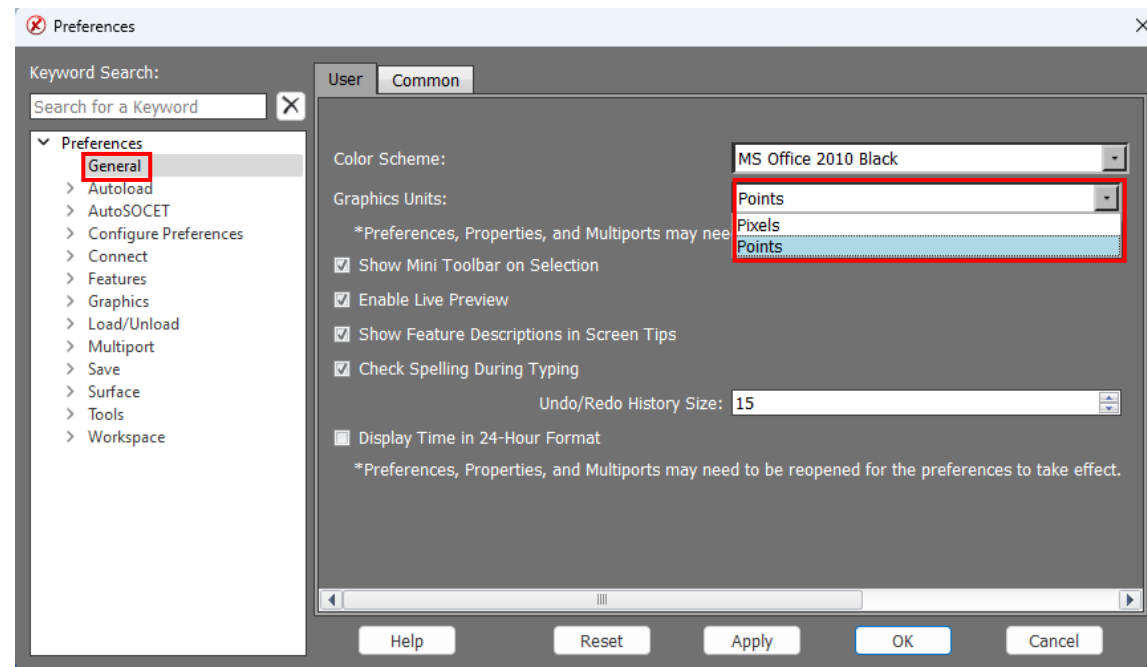
NER Open/Save button



Point graphics units preference

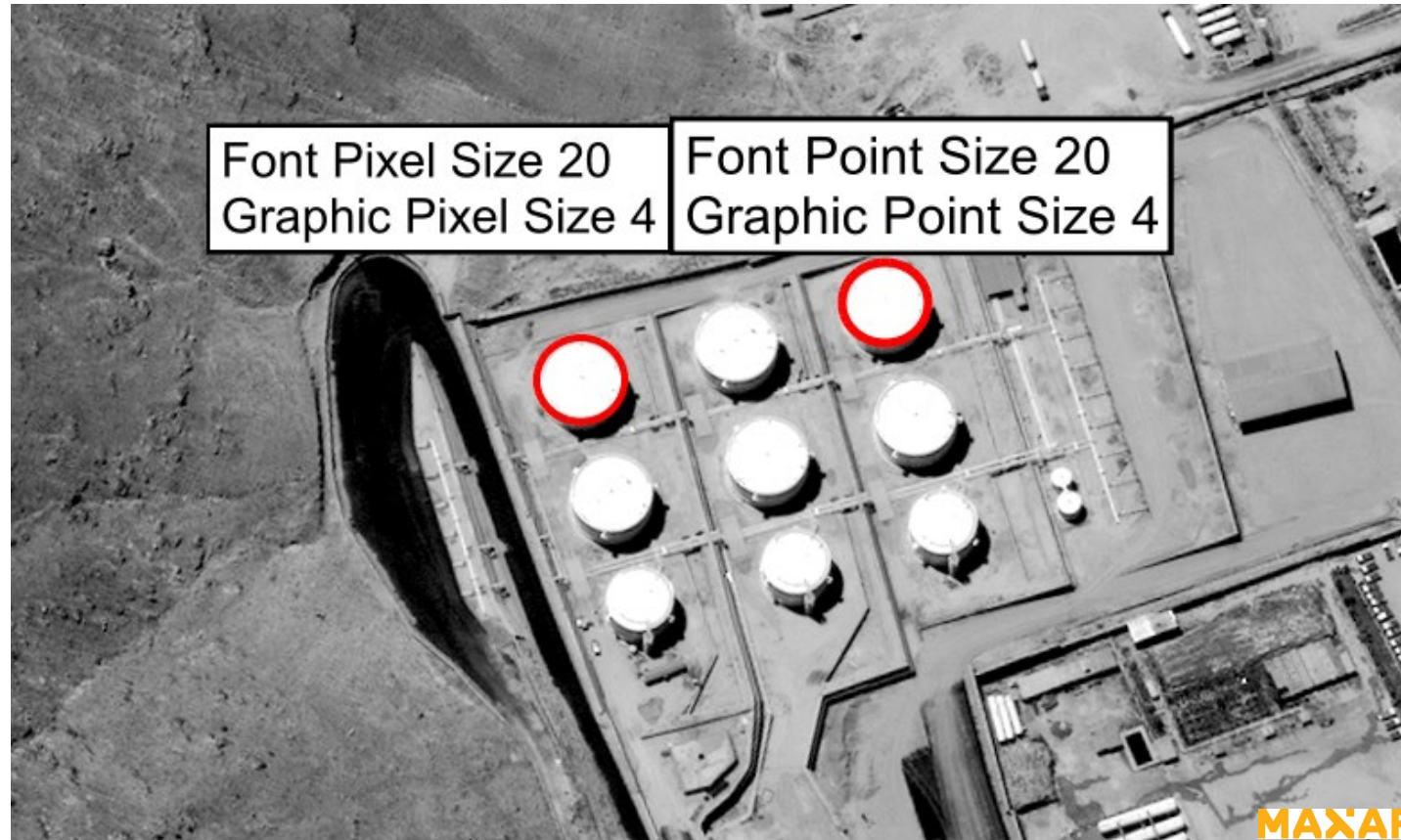
- Users can now use point size instead of pixels.
- Maintains graphic size across different screen resolutions.
- Can be updated on the fly.

Graphics Units Preference



New point graphics units preference

- Example:



Additional new features

- Now clean up all files after an MIE4NITF file is unloaded.
- GXP Automatic Tools for Object Recognition (GATOR):
 - Added the ability to support AOI's from Ortho map and imagery.
 - SOCET GXP now gets its source classification for GATOR detections from GXP Xplorer Platform.
- Users can now populate SNSPSB records with eCIB creation.
- Optimized triangulation and terrain convert jobs to look for errant points and remove them.
- Added the ability to Skip gaps in MTI data playback.
 - If the data has a gap in coverage, it will automatically be skipped when animated.
- Added messaging to inform the user if their InSAR data isn't compatible for CCD (Coherent Change Detection) generation.

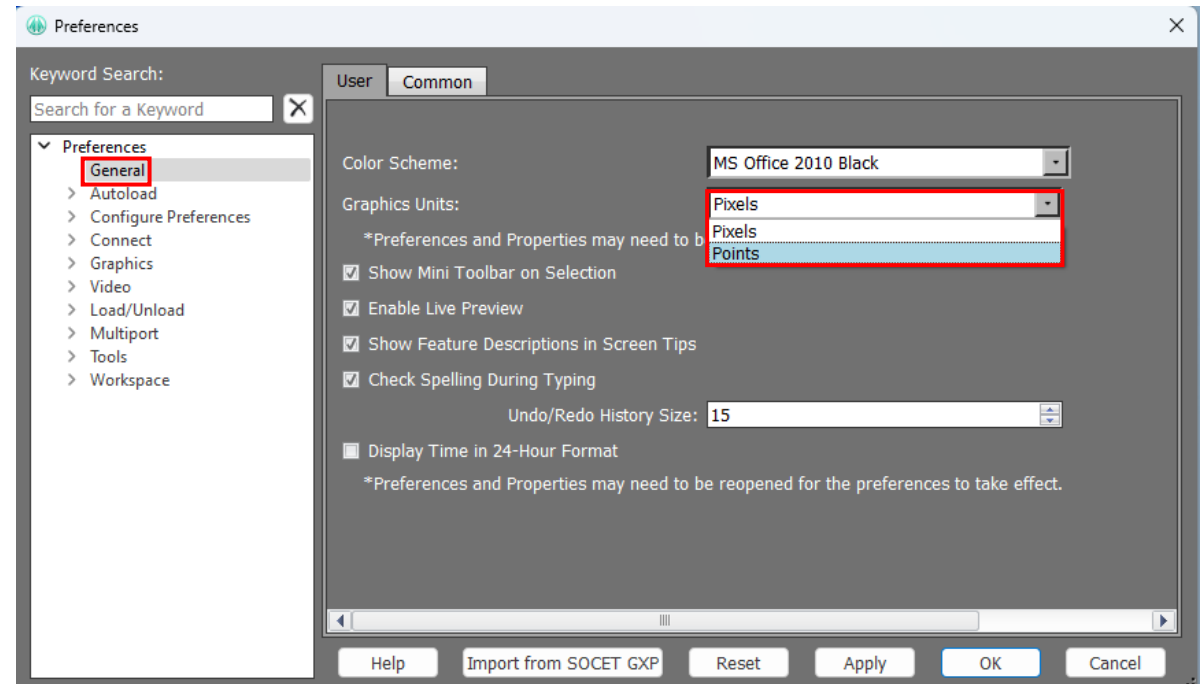
GXP InMotion v4.6.0.0 release enhancements



Point graphics units preference

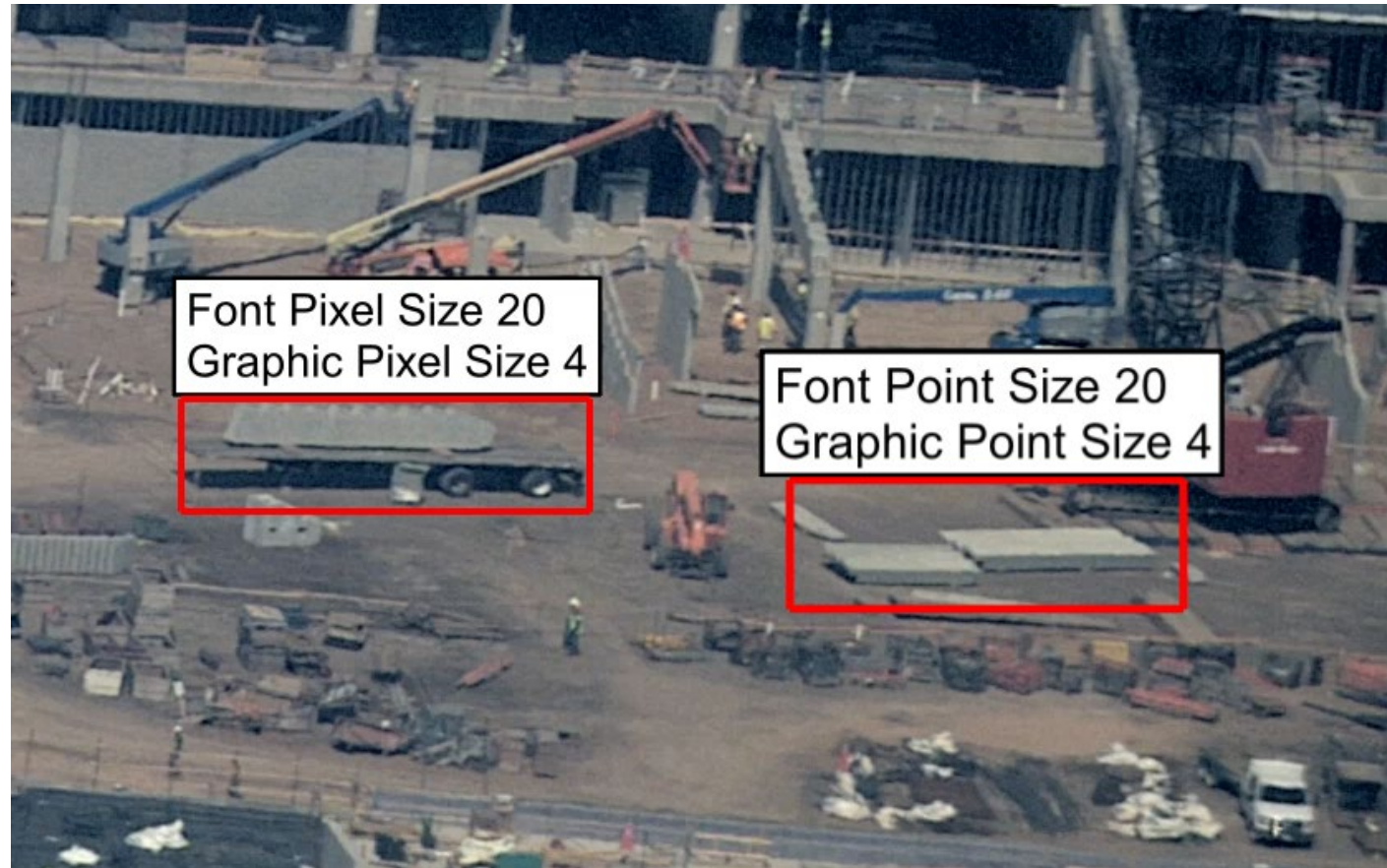
- Users can now use point size instead of pixels.
- Maintains graphic size across different screen resolutions.
- Can be updated on the fly.

Graphics Units Preference



New point graphics units preference

- Example:



Imagery of MX-15 videos over Ft. Collins, CO; Courtesy of L-3 Communications, EO/IR Inc.

GXP Desktop v4.6.0.1 release enhancements

- This presentation contains the enhancements included in SOCET GXP and GXP InMotion released March 27th, 2025.
- GXP Desktop software releases are full installations.

SOCET GXP v4.6.0.1 release enhancements



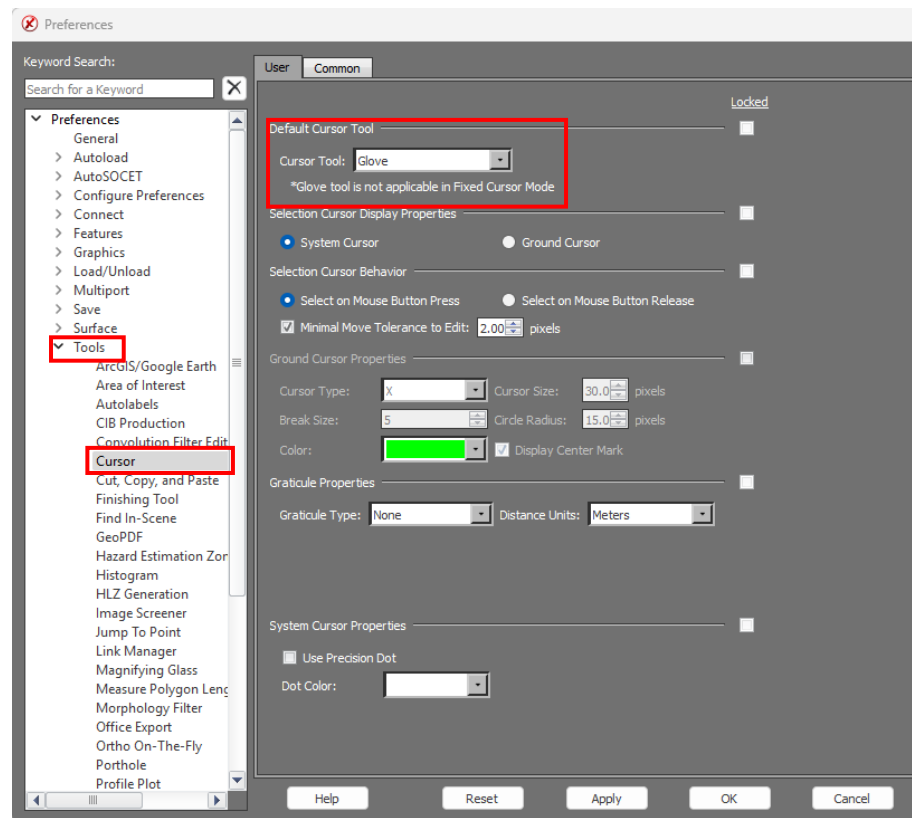
Infrastructure updates

- Updated to Java® 11.
- Updated PostgreSQL.
- Updated OpenSSL.
- Added support for .NET 8.
- Integrated OAuth2.0 authentication.
- Updated UnicodeDateTime.

Added preference for Default Cursor Tool

- Allows cursor to default to Glove tool.

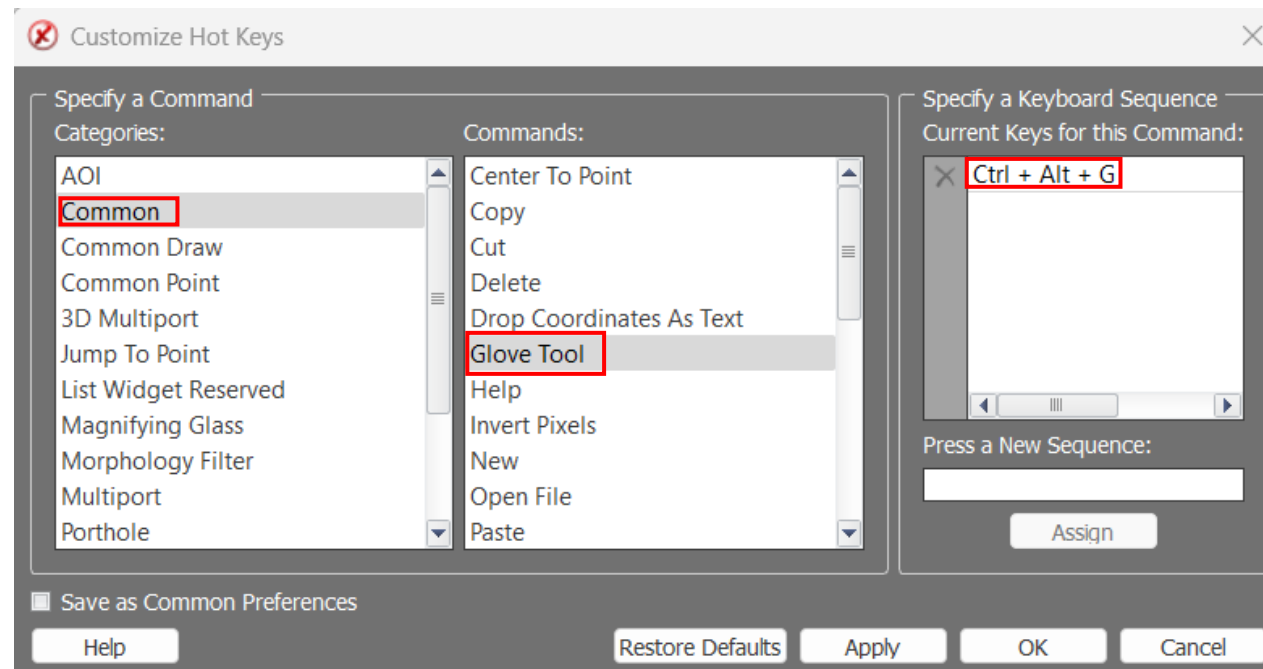
Default Cursor Tool preference



Added Hotkey for Glove tool

- Allows cursor to quickly change to Glove tool.

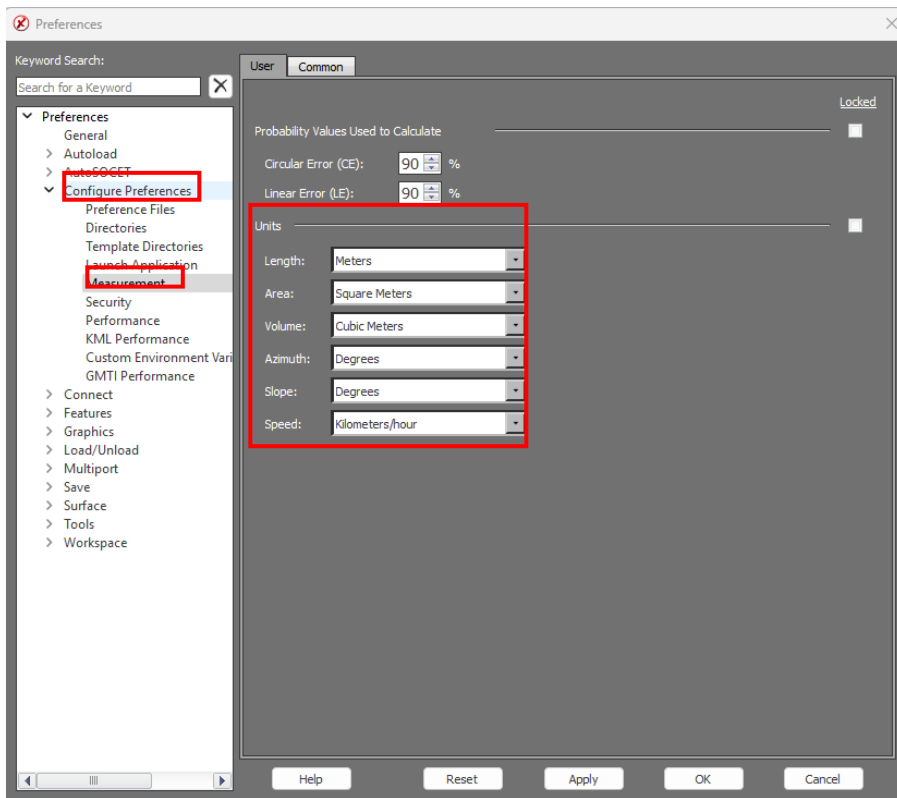
Glove tool Hot Key location



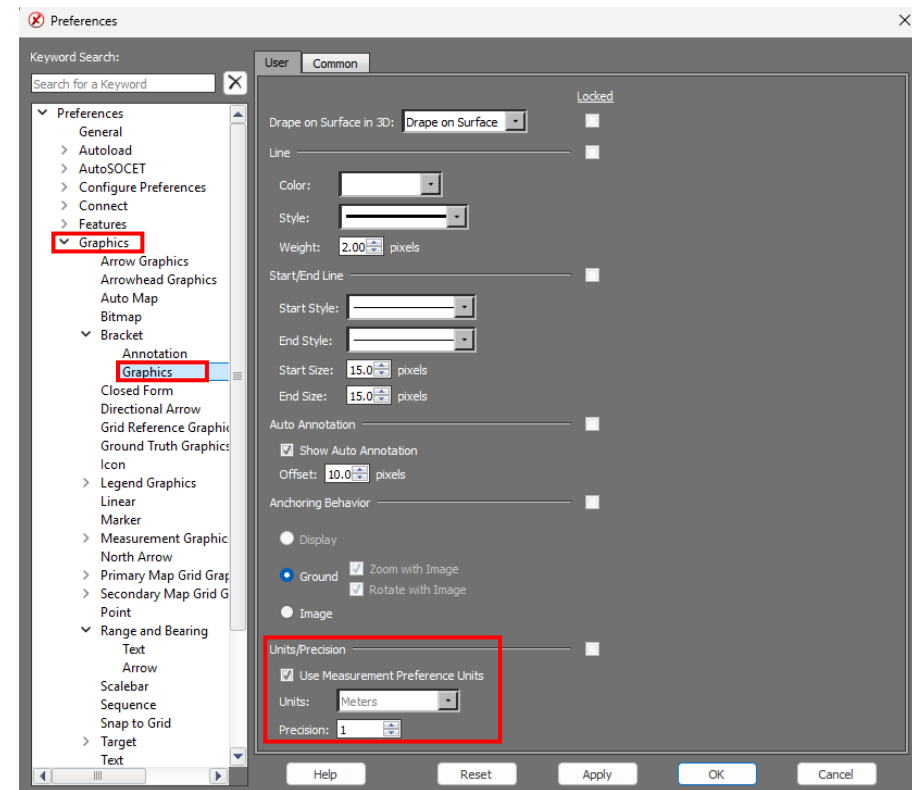
Added Measurement Override to Preferences

- Measurement overrides were added to Bracket & Range and Bearing graphics preferences.

Measurement preference location



Override Measurement preference location

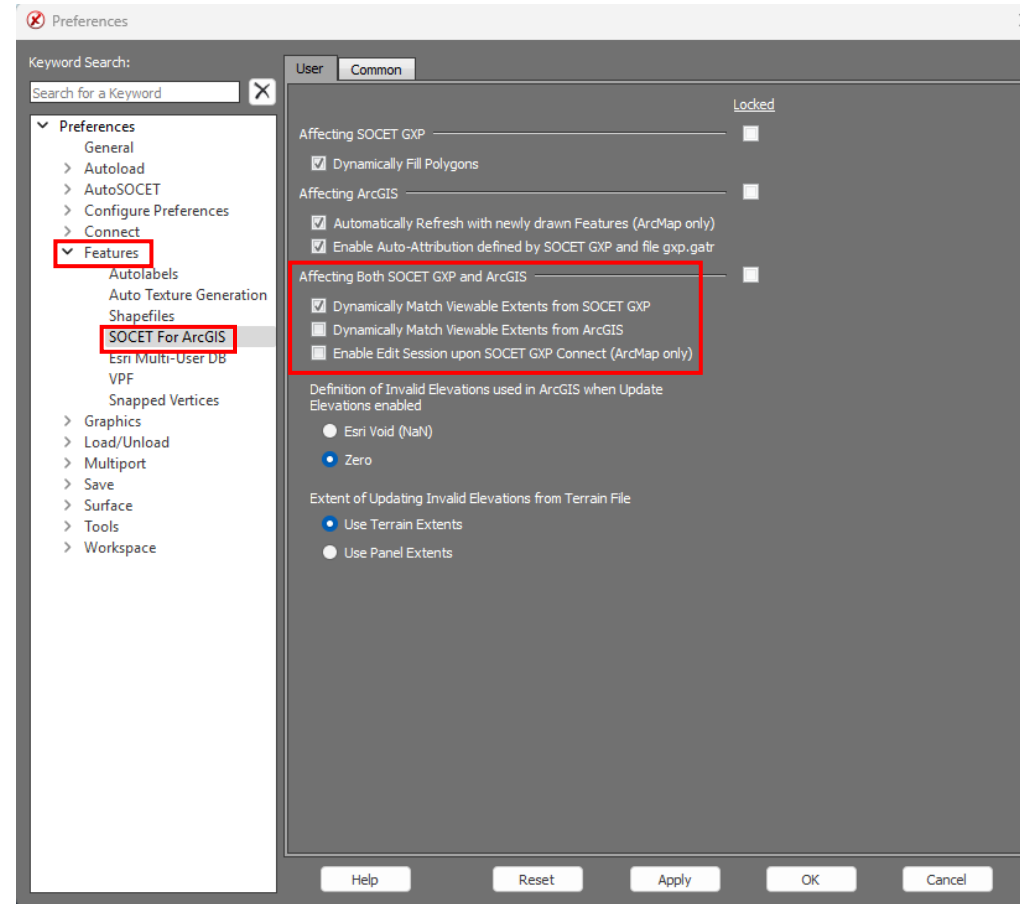


Sync Cursor

- Allows users to sync cursors between SOCET GXP and ArcGIS® Pro
 - Improves QC time
 - Viewing extents automatically update
 - Cursors sync in the following modes:
 - Fixed Image
 - Fixed Cursor
 - Stereo
 - Split Screen Stereo
 - Hotkey is “Alt + Shift + S”

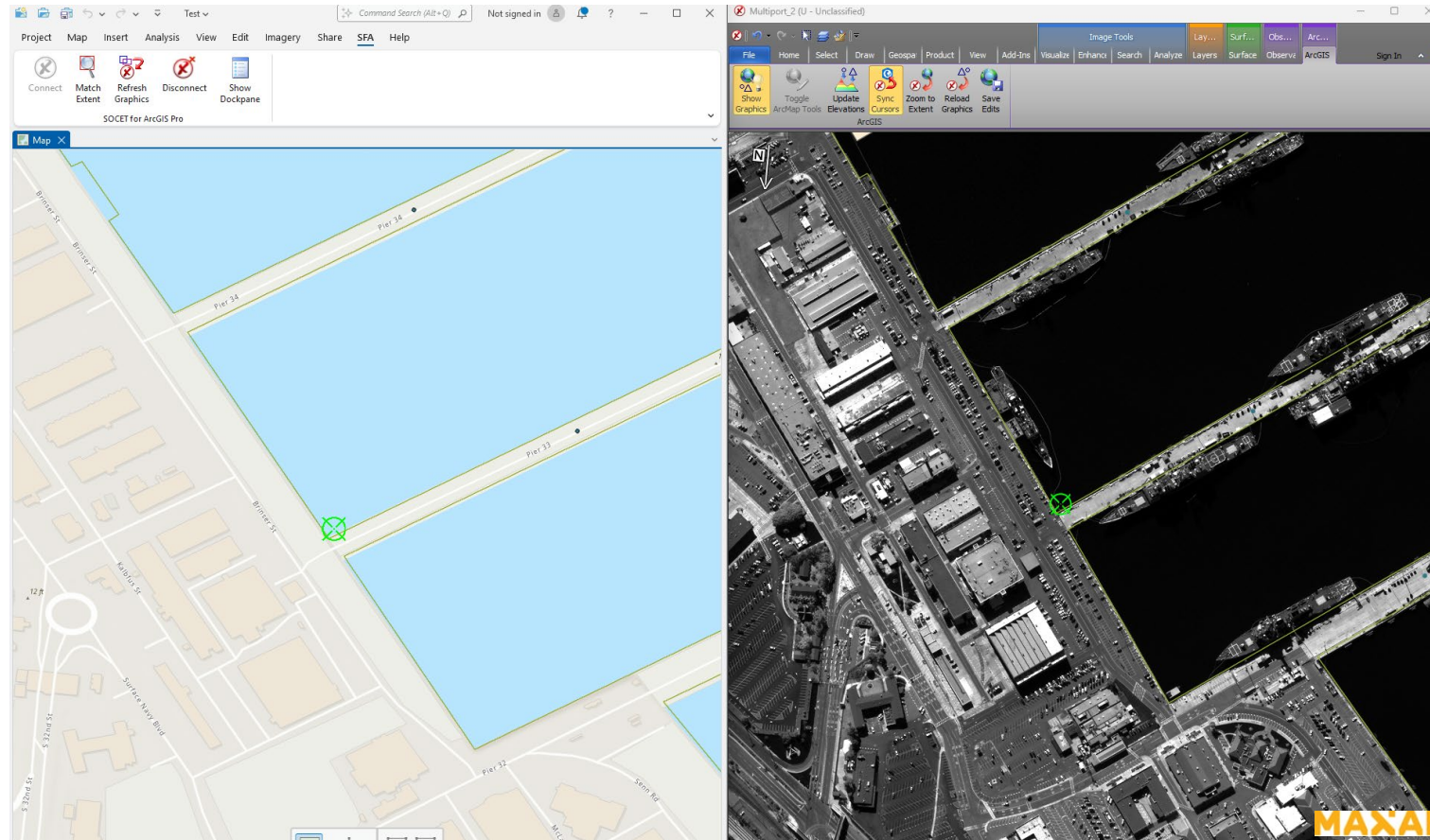
Sync Cursor ...2

Sync Cursor Preference location



Sync Cursor ...3

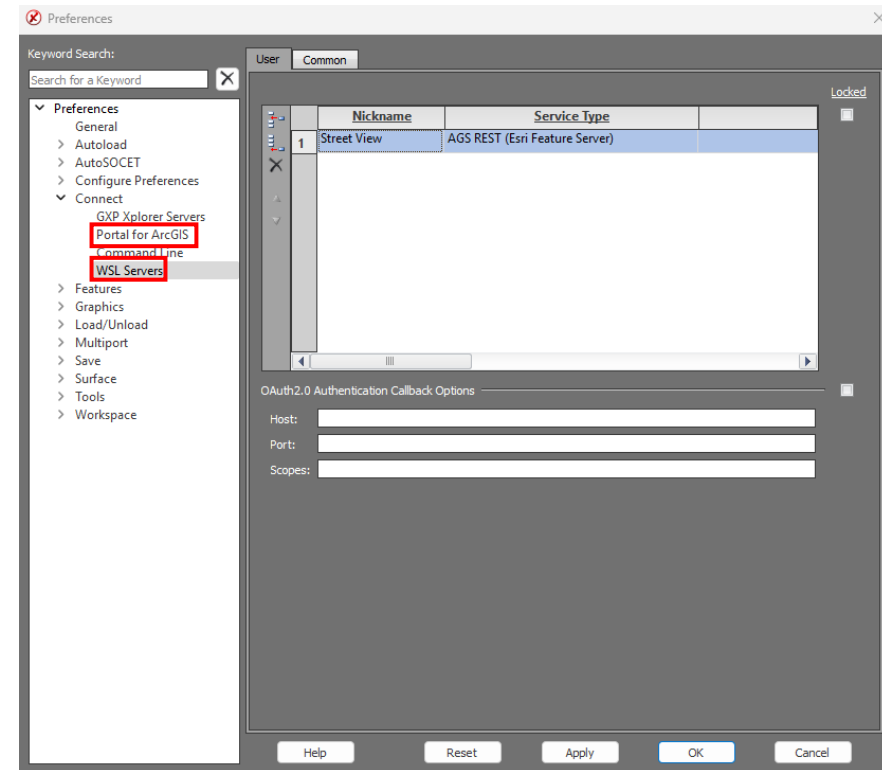
Sync Cursor UI



Web Service Layer

- Added a preference for Web Service Layers.
- Allows for easier configuration and management.
- Added OAuth2.0 authentication support.

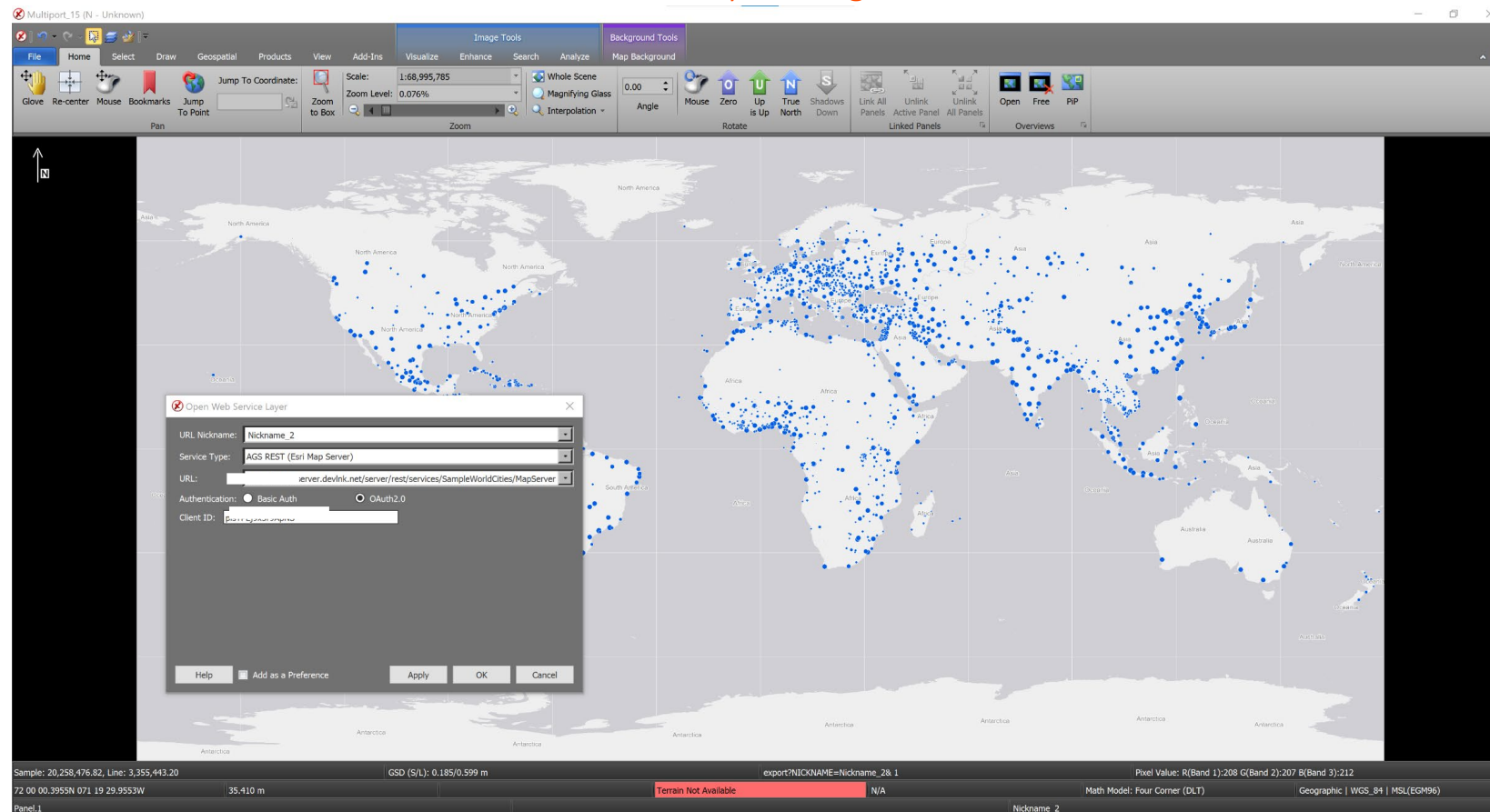
Web Service Layer Preference



Web Service Layer ...2

- Added additional Esri® Authentication using OAuth2.0.

Web Service Layer using OAuth2.0



Added Layer Name to Esri results

- When an Esri Feature Service is selected from the GXP Xplorer Connector we return the service URL and Layer Name.
- Enables users to quickly select and display layers of interest.

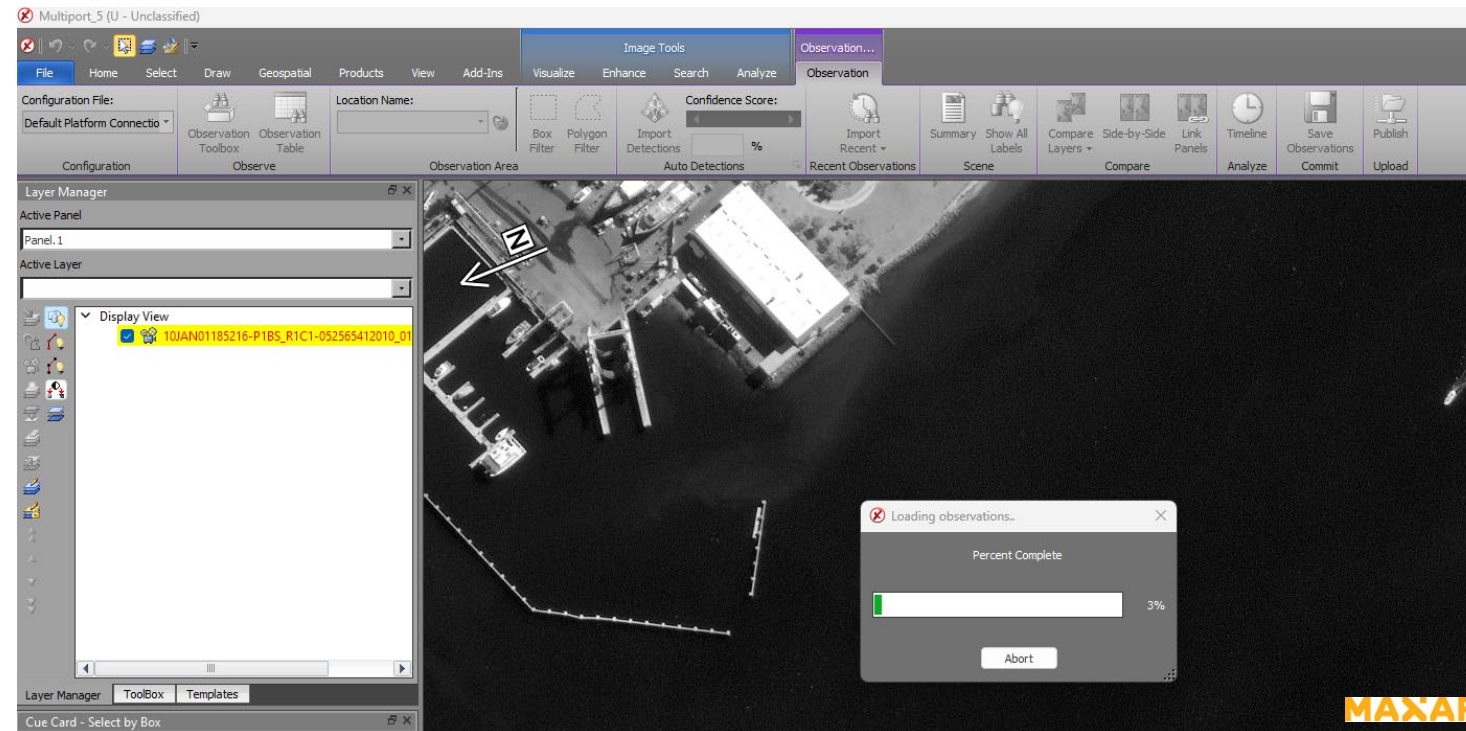
Feature Service Layer

The screenshot shows the GXP Xplorer Connector interface. The main map area displays a world map with a yellow grid overlay. The search results table at the bottom lists various Esri Feature Services. The first row is highlighted in red, indicating the selected service.

Date Collected	Filename	Tags (Tags)	Sensor Name (Derived)	Size	Related Files/Number of Files	Downloadable/Status
No filter selected	No filter selected	No filter selected	No filter selected	No filter selected	No	No
	https://sampleserver1.arcgisonline.com/arcgis/rest/services/Phenomena/FeatureServer - Dispatch		SERVICE_ESRI_FEATURESERVER	0 bytes	No	No
	https://sampleserver1.arcgisonline.com/arcgis/rest/services/veinsandemergencyvehicles/FeatureServer - ambulances		SERVICE_ESRI_FEATURESERVER	0 bytes	No	Unknown
	https://sampleserver1.arcgisonline.com/arcgis/rest/services/RedlandsEmergencyVehicles/FeatureServer - Police		SERVICE_ESRI_FEATURESERVER	0 bytes	No	Unknown
	https://sampleserver1.arcgisonline.com/arcgis/rest/services/RedlandsEmergencyVehicles/FeatureServer - Fire		SERVICE_ESRI_FEATURESERVER	0 bytes	No	Unknown
	https://sampleserver1.arcgisonline.com/arcgis/rest/services/ServiceRequests/FeatureServer - Service Requests		SERVICE_ESRI_FEATURESERVER	0 bytes	No	Unknown
	https://sampleserver1.arcgisonline.com/arcgis/rest/services/NetworkLine/FeatureServer - Extract_Linestring_Feature30D		SERVICE_ESRI_FEATURESERVER	0 bytes	No	Unknown
	https://sampleserver1.arcgisonline.com/arcgis/rest/services/NapervilleShelters/FeatureServer - Shelters		SERVICE_ESRI_FEATURESERVER	0 bytes	No	Unknown
	https://sampleserver1.arcgisonline.com/arcgis/rest/services/OilandProjectBoundaries/FeatureServer - OIProjectPoints2015		SERVICE_ESRI_FEATURESERVER	0 bytes	No	Unknown
	https://sampleserver1.arcgisonline.com/arcgis/rest/services/Water_Network/FeatureServer - Water Hydrant Valves		SERVICE_ESRI_FEATURESERVER	0 bytes	No	Unknown
	https://sampleserver1.arcgisonline.com/arcgis/rest/services/Water_Network/FeatureServer - Water Curb Stop Valves		SERVICE_ESRI_FEATURESERVER	0 bytes	No	Unknown
	https://sampleserver1.arcgisonline.com/arcgis/rest/services/Water_Network/FeatureServer - Water Firefights		SERVICE_ESRI_FEATURESERVER	0 bytes	No	Unknown
	https://sampleserver1.arcgisonline.com/arcgis/rest/services/Water_Network/FeatureServer - Water System Valves		SERVICE_ESRI_FEATURESERVER	0 bytes	No	Unknown
	https://sampleserver1.arcgisonline.com/arcgis/rest/services/Water_Network/FeatureServer - Water Mains		SERVICE_ESRI_FEATURESERVER	0 bytes	No	Unknown
	https://sampleserver1.arcgisonline.com/arcgis/rest/services/Water_Network/FeatureServer - Water Lateral Lines		SERVICE_ESRI_FEATURESERVER	0 bytes	No	Unknown
	https://sampleserver1.arcgisonline.com/arcgis/rest/services/Water_Network/FeatureServer - Water Casings		SERVICE_ESRI_FEATURESERVER	0 bytes	No	Unknown
	https://sampleserver1.arcgisonline.com/arcgis/rest/services/Water_Network/FeatureServer - Water Network Structures - City View		SERVICE_ESRI_FEATURESERVER	0 bytes	No	Unknown
	https://sampleserver1.arcgisonline.com/arcgis/rest/services/Water_Network/FeatureServer - Water System Valves - Block View		SERVICE_ESRI_FEATURESERVER	0 bytes	No	Unknown
	https://sampleserver1.arcgisonline.com/arcgis/rest/services/Energy/Geology/FeatureServer - Field (Line)		SERVICE_ESRI_FEATURESERVER	0 bytes	No	Unknown
	https://sampleserver1.arcgisonline.com/arcgis/rest/services/Energy/Geology/FeatureServer - Contacts (Line)		SERVICE_ESRI_FEATURESERVER	0 bytes	No	Unknown

Loading Observations Status

- Users can now get feedback when loading Observations into a SO CET GXP Multiport.

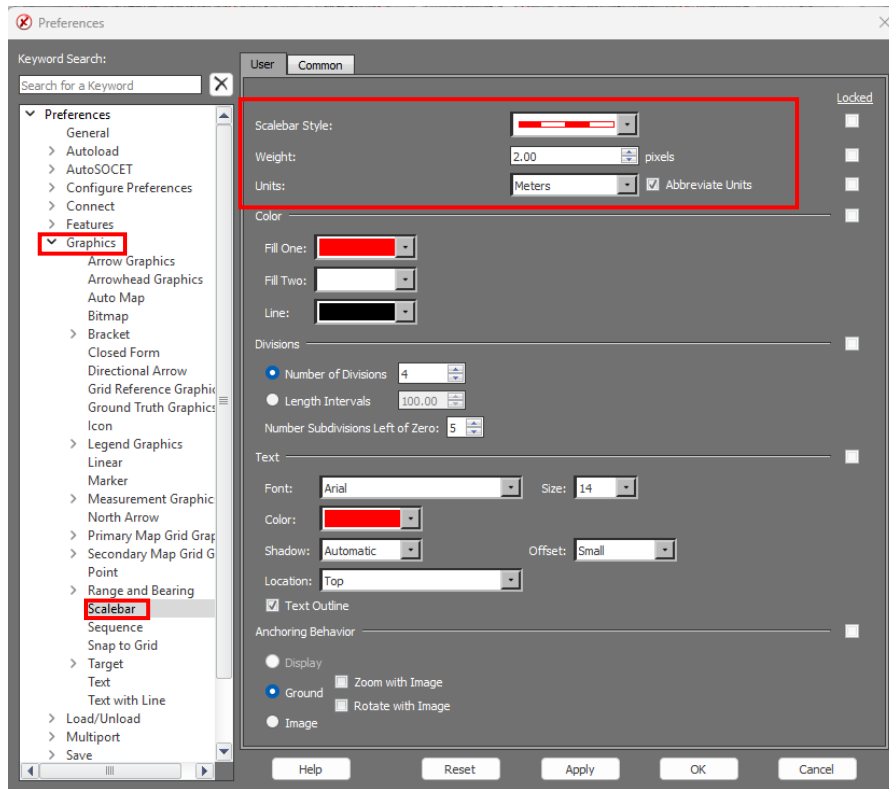


Scalebar improvements

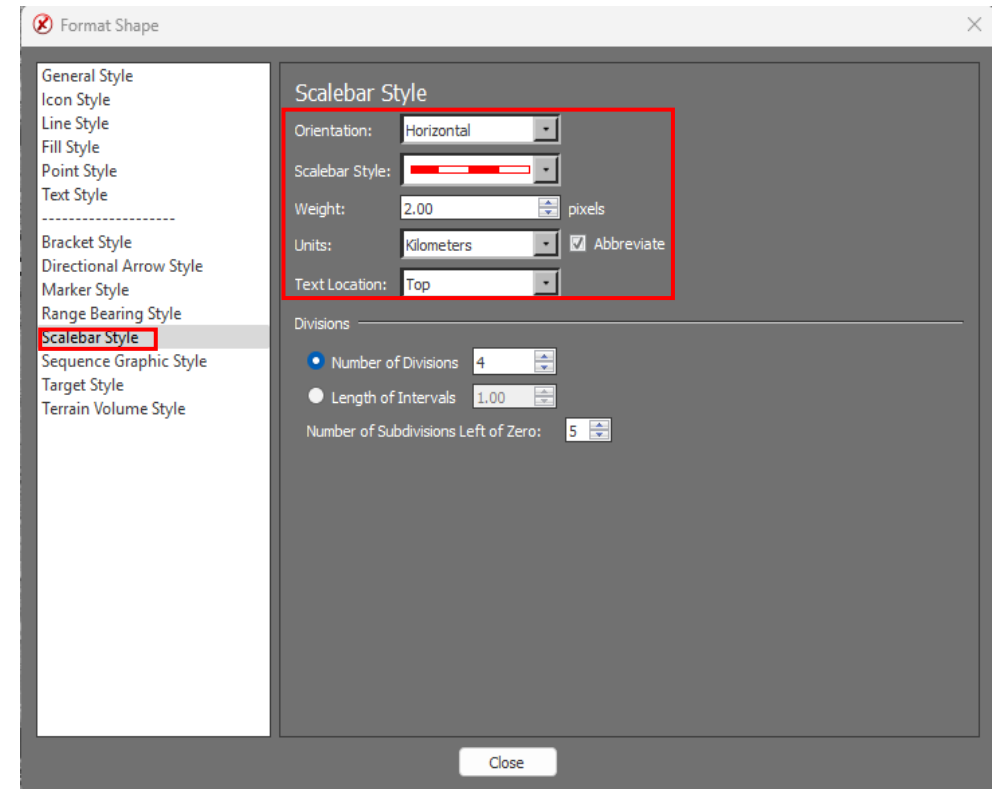
- Abbreviated units of measurement.
 - m = Meters.
 - km = Kilometers.
- Dynamically update via preferences.
- Enables users to save work prior to workflow completion.
- Convert orientation of scalebar.
 - Vertical/Horizontal.

Scalebar improvements ...2

Scalebar Preference

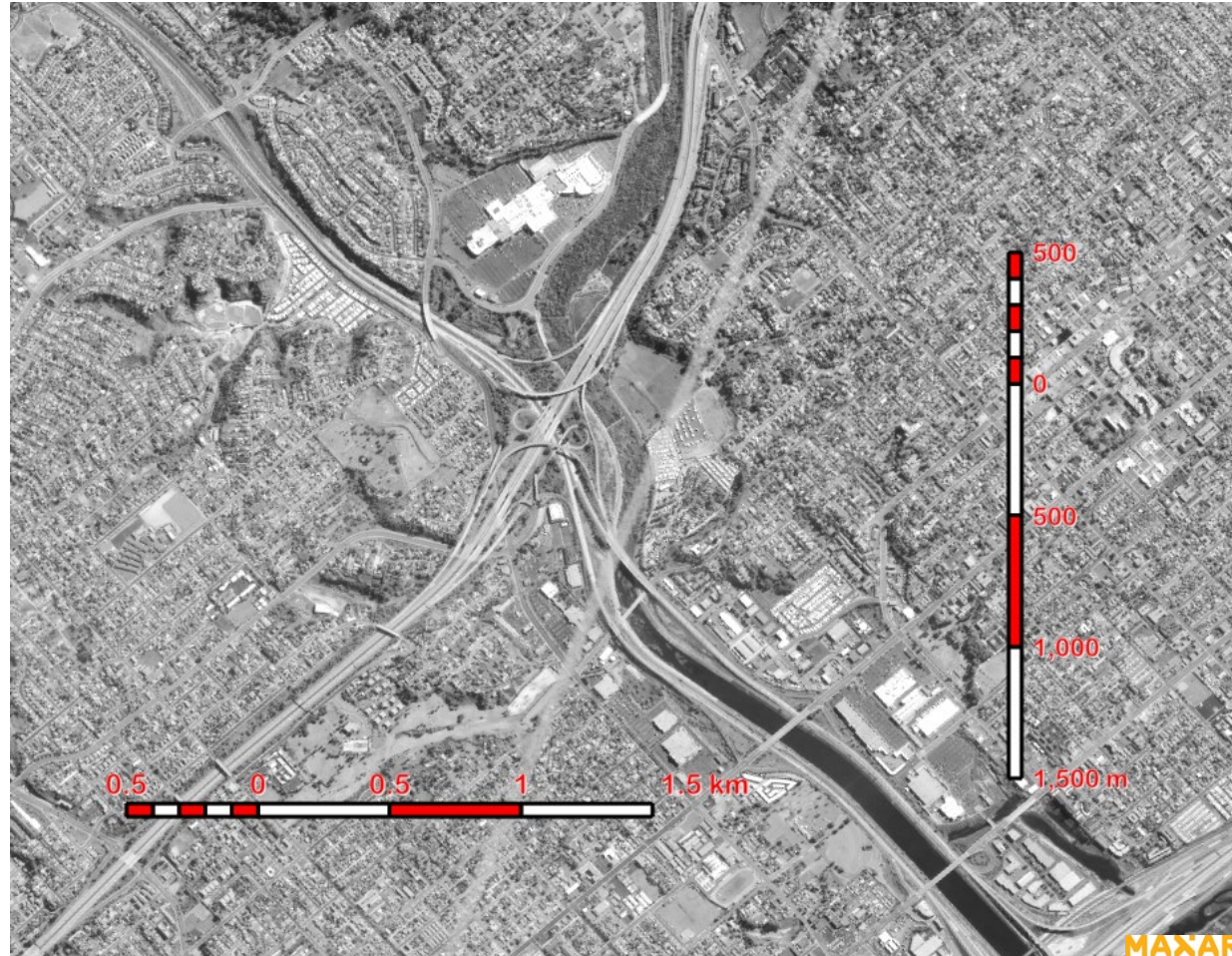


Scalebar Properties



Scalebar improvements ...3

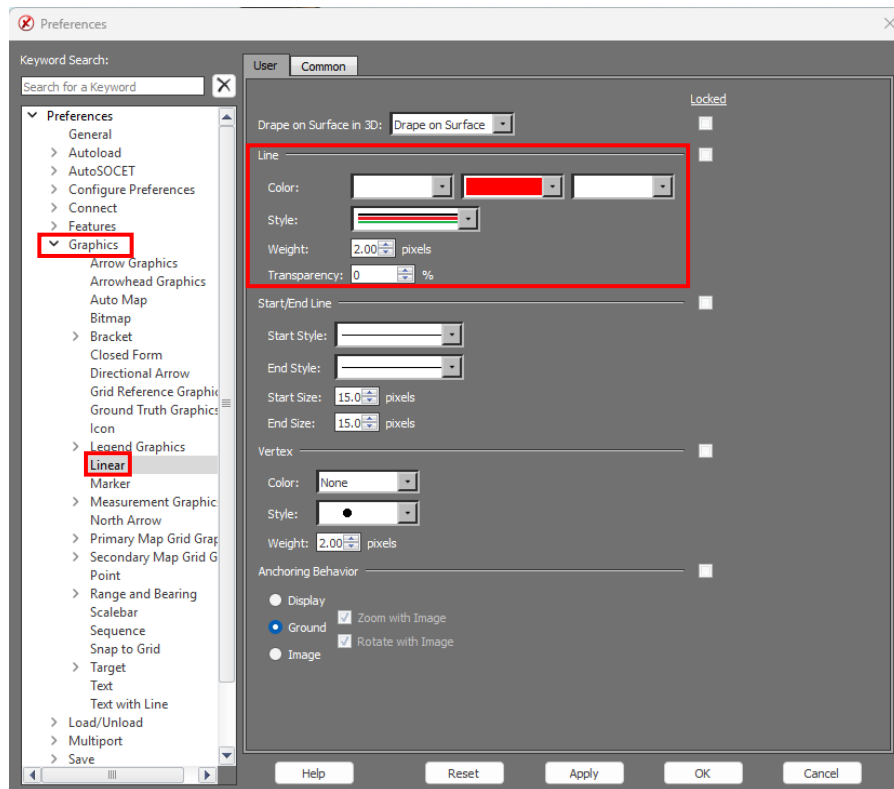
Scalebar Visualization



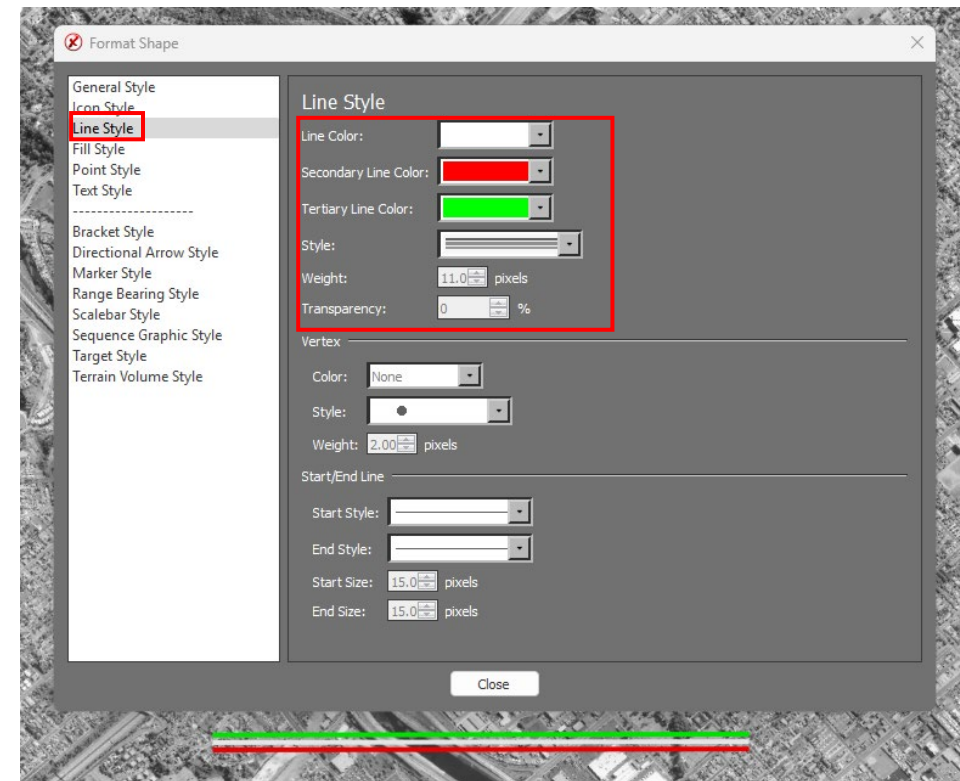
Multi-line style improvements

- Line style weights are now the entirety of the line style.

Linear Graphics Preference



Linear Graphics Properties



© 2025 Maxar Technologies.

Additional new features

- Cleaned up Debug log.
- Added GATOR GPU support.
 - UI change in GXP Xplorer Platform.
 - Environment variable change in SOCET GXP.
 - GPU is enabled when environment variable is set to: GXP_GATOR_USE_CUDA=TRUE.
 - Default is set for GPU optimization.
- Improved Epipolar rectification for oblique viewing.
 - A new sensor model was created for viewing extremely distorted imagery in stereo.

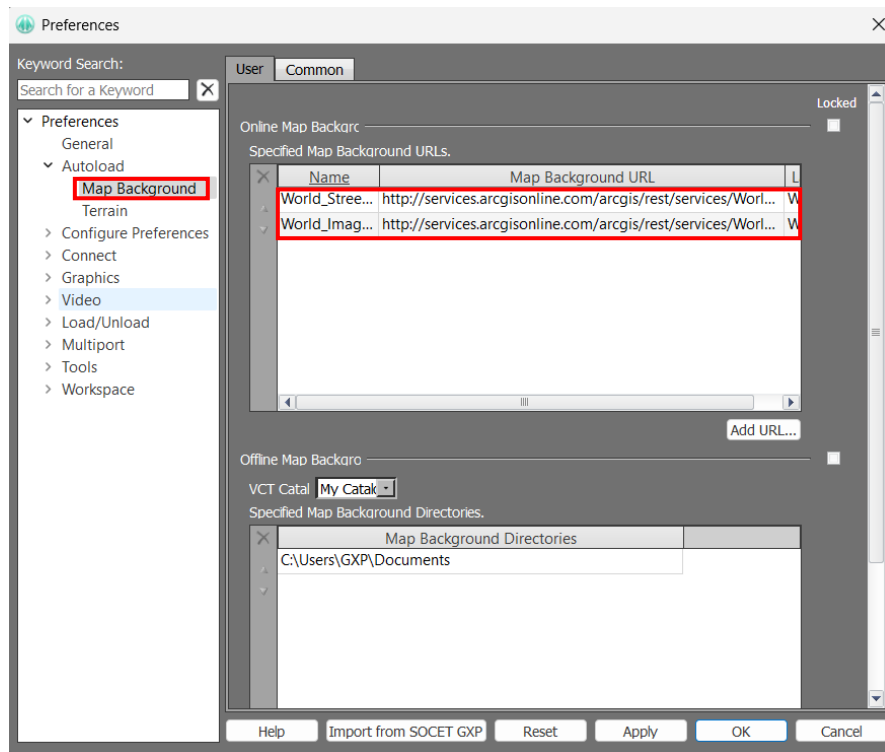
GXP InMotion v4.6.0.1 release enhancements



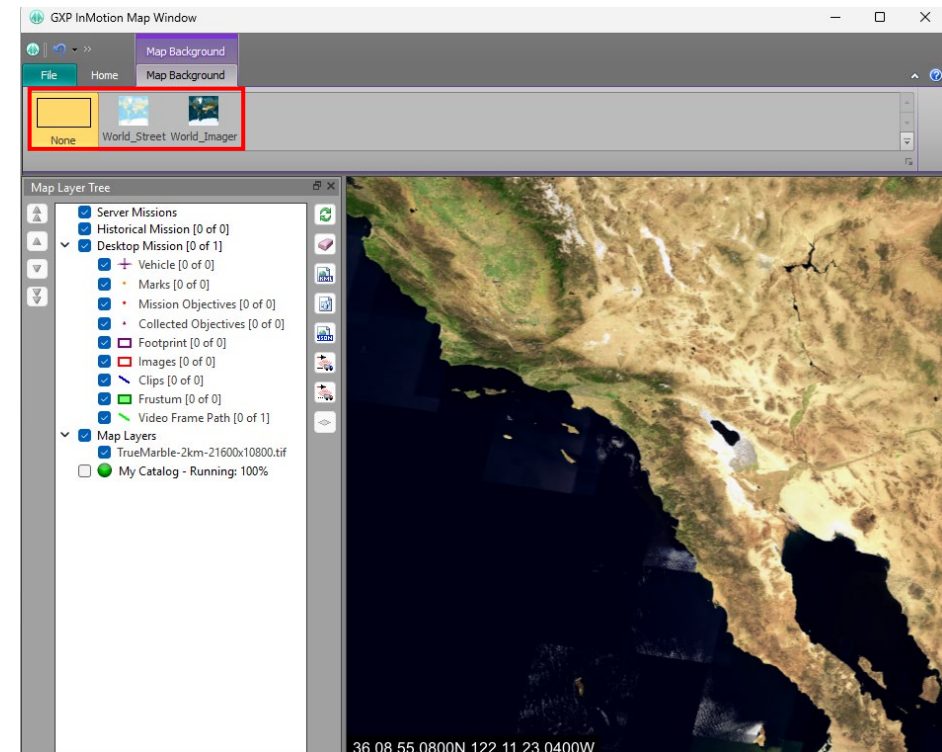
Map Background functionality

- Users can rename Map Backgrounds in Preferences and in the Multiport.

Map Background Preference



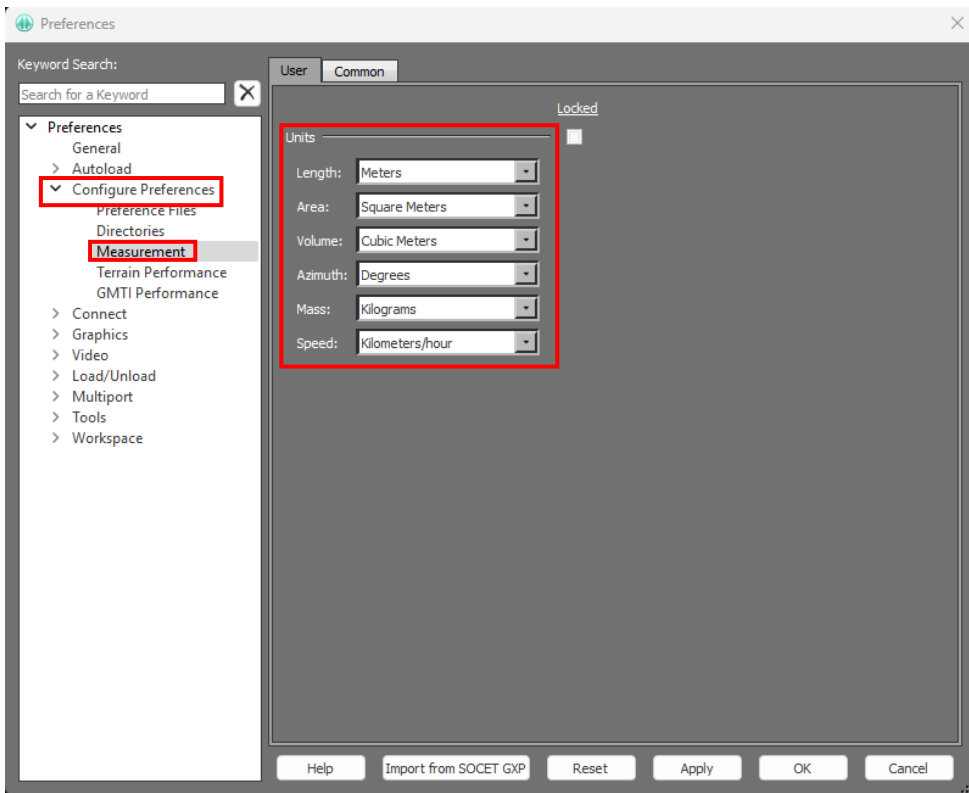
Map Background View and Rename from Map Window



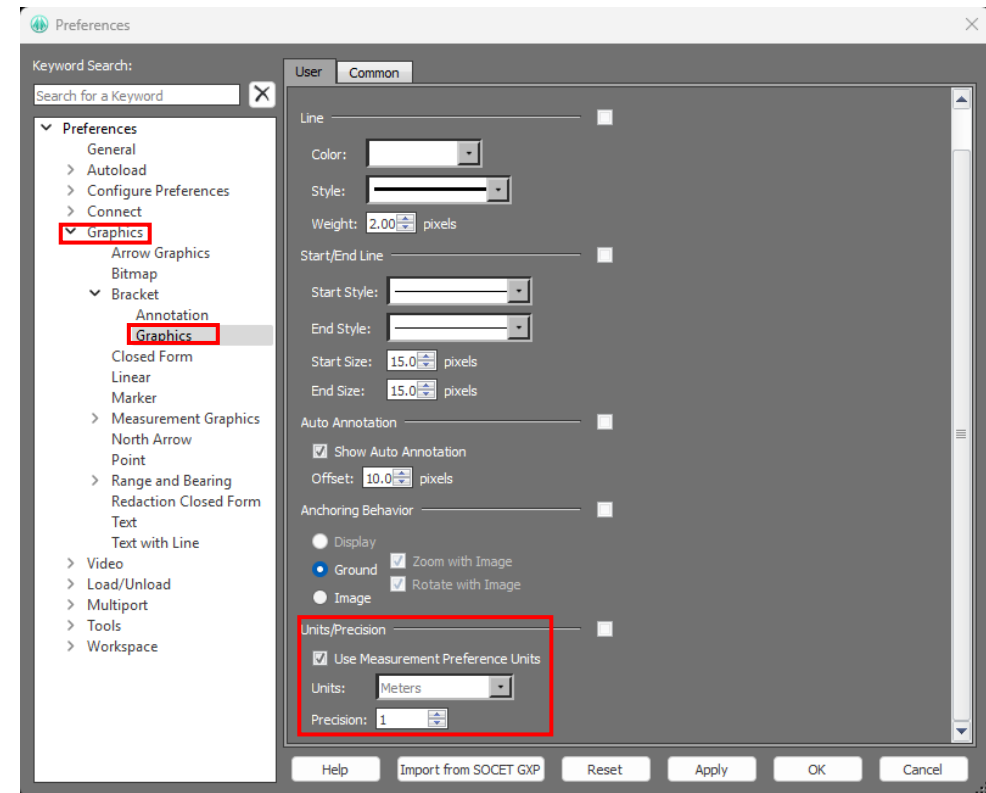
Added Measurement Override to Preferences

- Measurement overrides were added to Bracket & Range and Bearing graphics preferences.

Measurement preference location



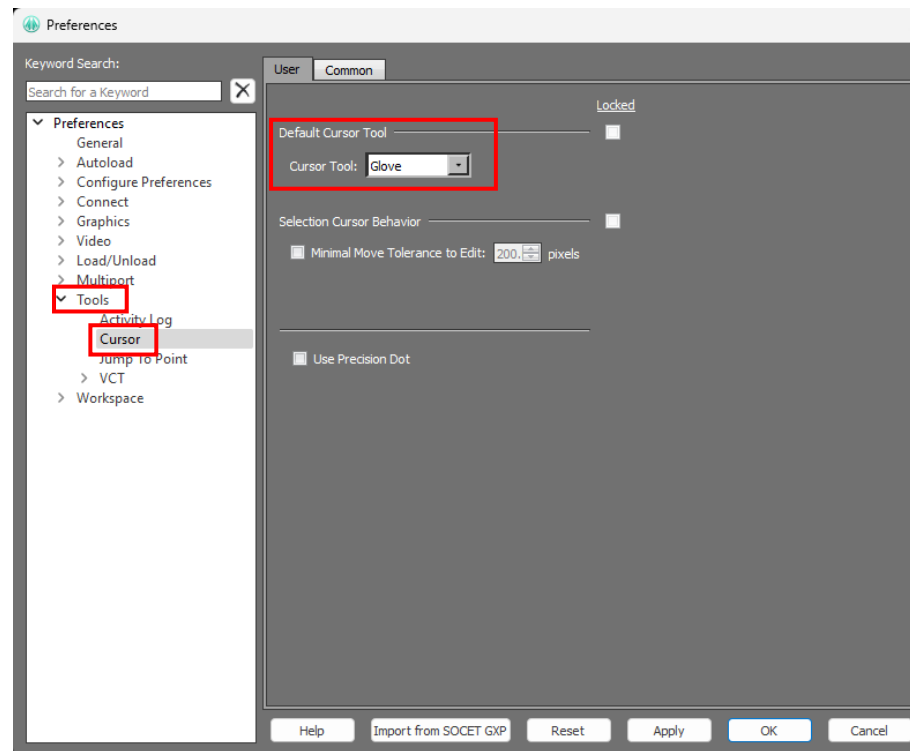
Override Measurement preference location



Added preference for Default Cursor Tool

- Allows cursor to default to Glove tool.

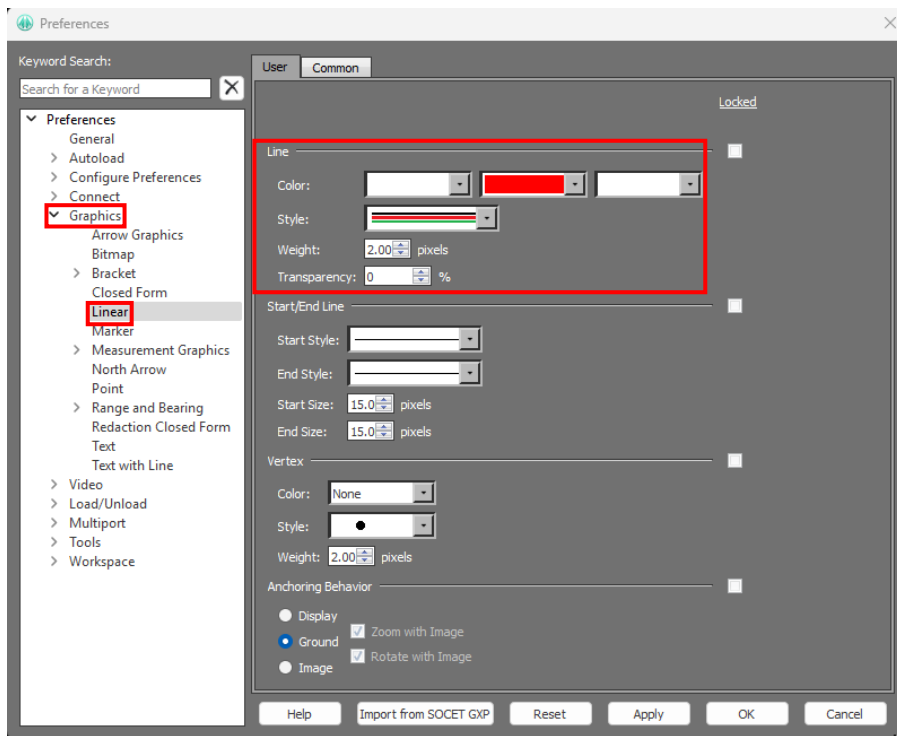
Default Cursor Tool preference



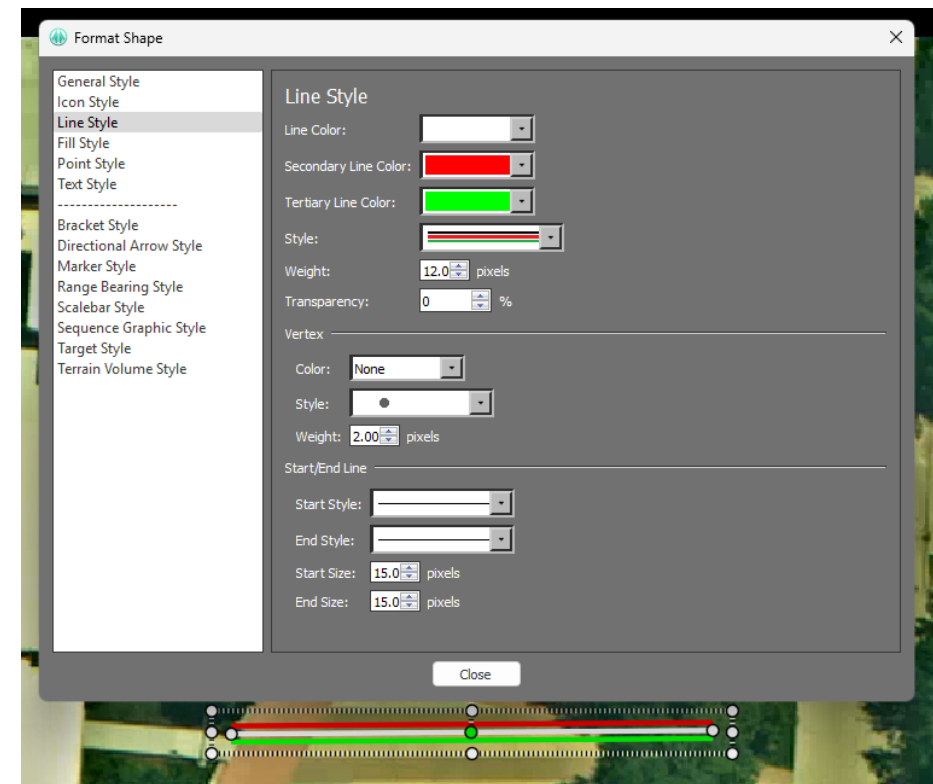
Multi-line style improvements

- Line style weights are now the entirety of the line style.

Linear Graphics Preference



Linear Graphics Properties



Imagery of MX-15 videos over Ft. Collins; Courtesy of L-3 Communications, EO/IR Inc.

Thank you

Evan Miller

GXP Product Development

571-643-5070

evan.miller2@baesystems.us