

# GXP Xplorer® Platform v2.6.4 Release enhancements

Presented by GXP® Product Development



## General information

- New licenses are required when upgrading from GXP Xplorer® Platform v2.5 or earlier.
- Upgrade is supported from GXP Xplorer v2.5.9+.
- Federation is supported for GXP Xplorer v2.5.9+.
- Synchronization is supported for GXP Xplorer v2.5.9+ (see Release Notes for additional information).
- Data models from the GXP Xplorer Platform v2.5.5+ can be imported, all data model objects will be represented.
- Support for Windows® Server 2022, 2019.
- Support for Windows 11.

## Infrastructure updates

- Integrated MSP v3.1.
- Upgraded Apache® Tika to v3.2.2.
- Updated OpenJDK® to v11.0.27.6.
- Data Model editor performance improvements.
- Removed reliance on Podman based virtual machine for GXP® Metrics and the GXP Fusion® Network Graph.
- Windows Management Instrumentation Command-line no longer required (capability has been deprecated in Windows).
- Upgraded to ReGraph v5.8.
- Upgraded to Kronograph v3.8.

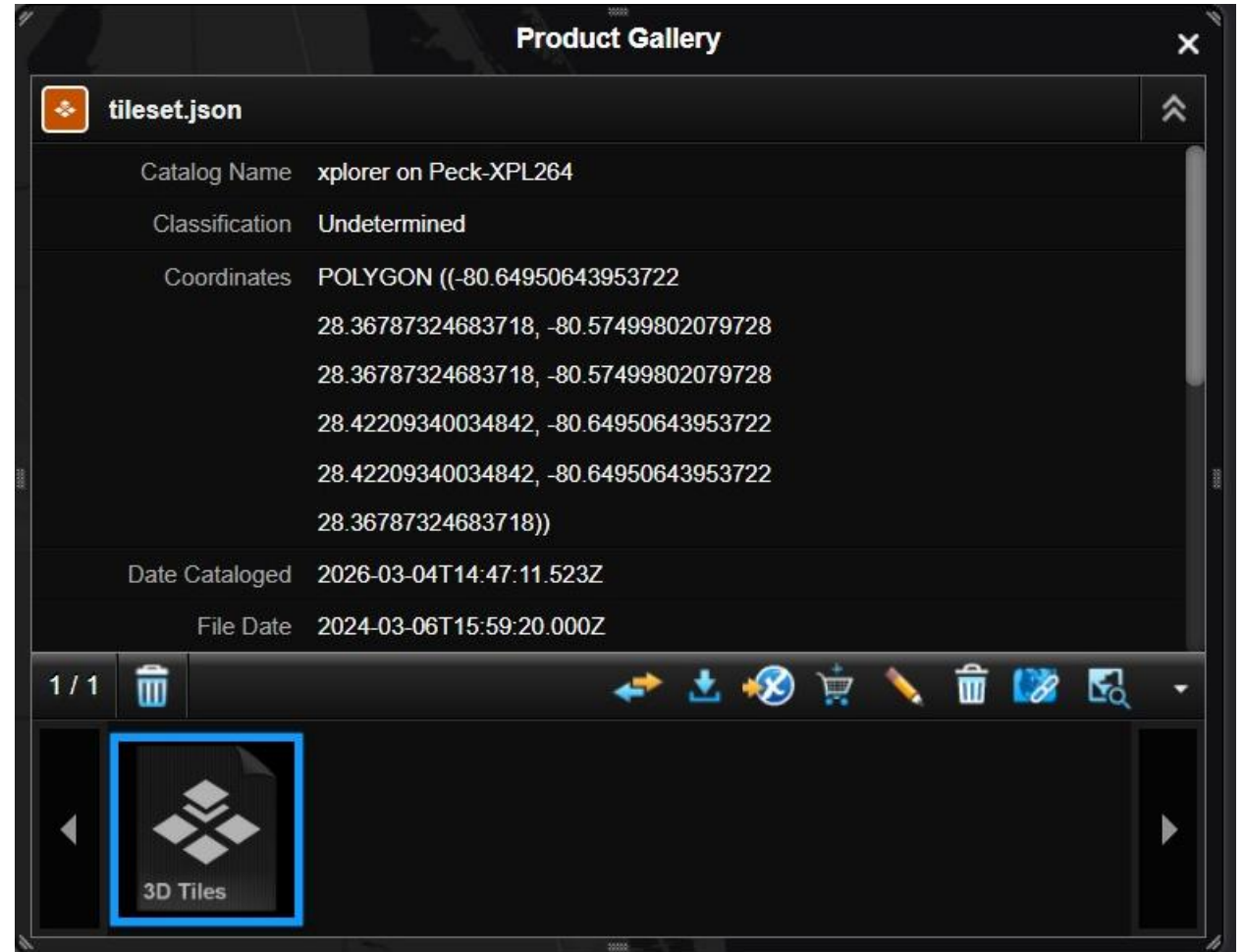
# GXP Xplorer v2.6.4 updates



## Improved 3DTiles support

3DTiles datasets cataloged by GXP Xplorer can be opened in external clients.

- Open in SO CET GXP® via:
  - Direct File Open.
  - Network Stream.
- OGC Compliant Stream.
  - GXP Xplorer will provide a URL to the stream.



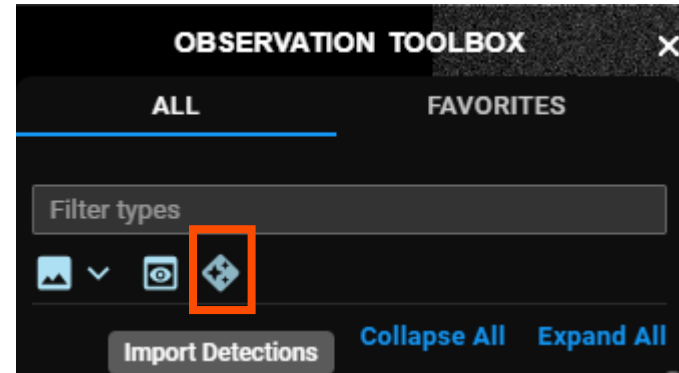
# GXP WebView® v2.6.4 updates



# View Detections and Commit as Observations

Users can load detections directly into GXP WebView for review.

- Users select a detection set to load into GXP WebView from the Observation Toolbox.
- Once loaded, the detections can be reviewed and then committed as Observations.



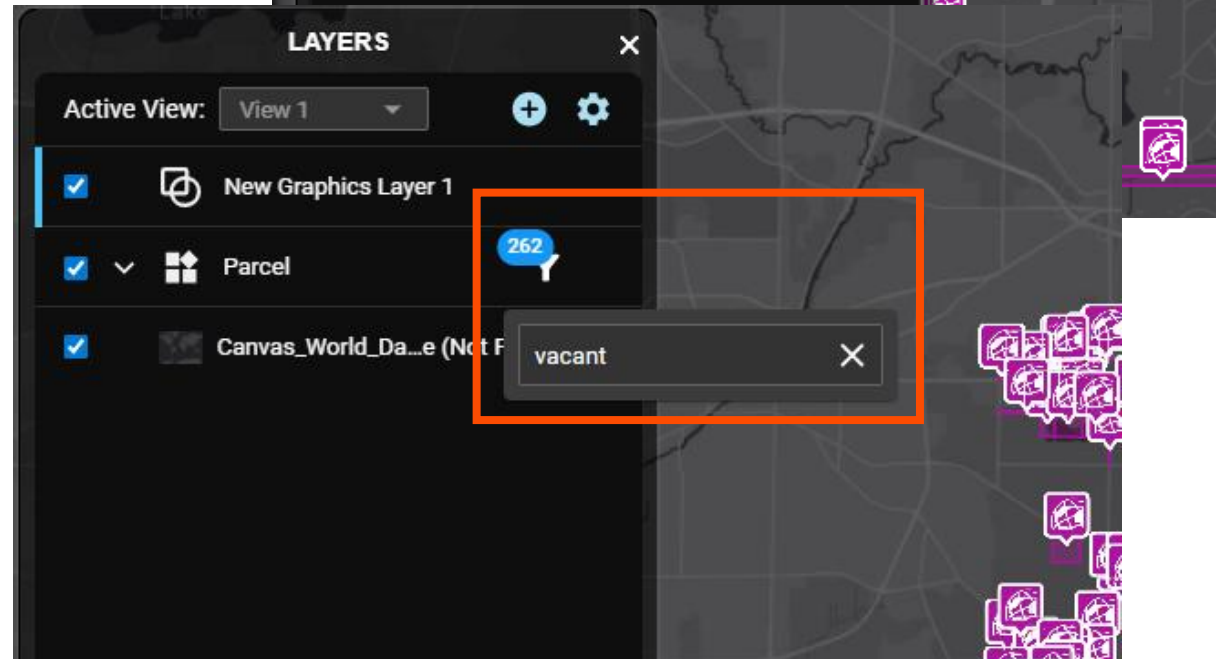
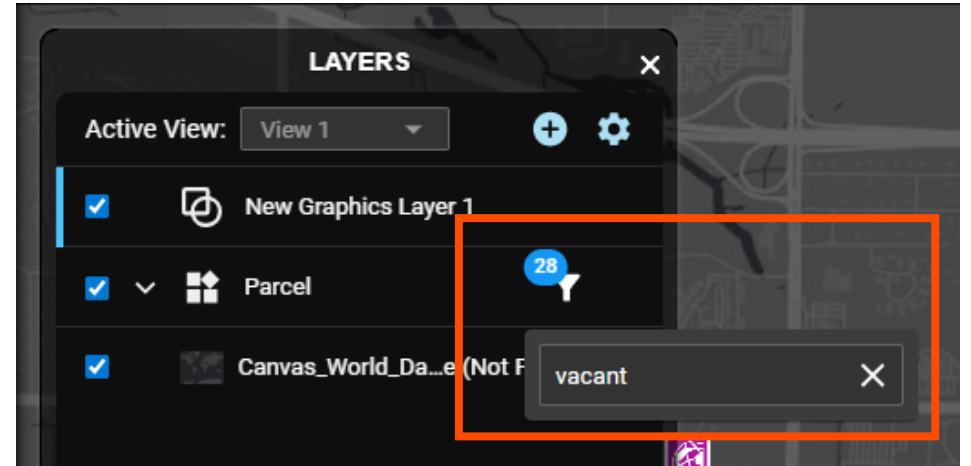
3 Observations		You have pending changes to publish				
<input type="checkbox"/>	Type	Activity	Source	Date Collected	Reviewed	Status
08FEB09183209-P1BS_R5C1-052565744010_01_P001.NTF						
<input type="checkbox"/>	b777	Select...	08FEB09183209-P1BS_R5C1-0525657440...	03/09/2026 05:48:35 PM	✓	Unpublished
<input type="checkbox"/>	b777	Select...	08FEB09183209-P1BS_R5C1-0525657440...	03/09/2026 05:48:35 PM	✓	Published
<input type="checkbox"/>	b777	Select...	08FEB09183209-P1BS_R5C1-0525657440...	03/09/2026 05:48:35 PM	✓	Published

Zoomed closely in

## Filtering on ArcGIS® Feature Services

Filter on attributes from an ArcGIS® Feature Service.

- Text based filtering on any attribute indexed by the ArcGIS Feature Service.
- Features will filter based on current view space.
- Attributes not indexed by the ArcGIS Feature Service.



Zoomed out

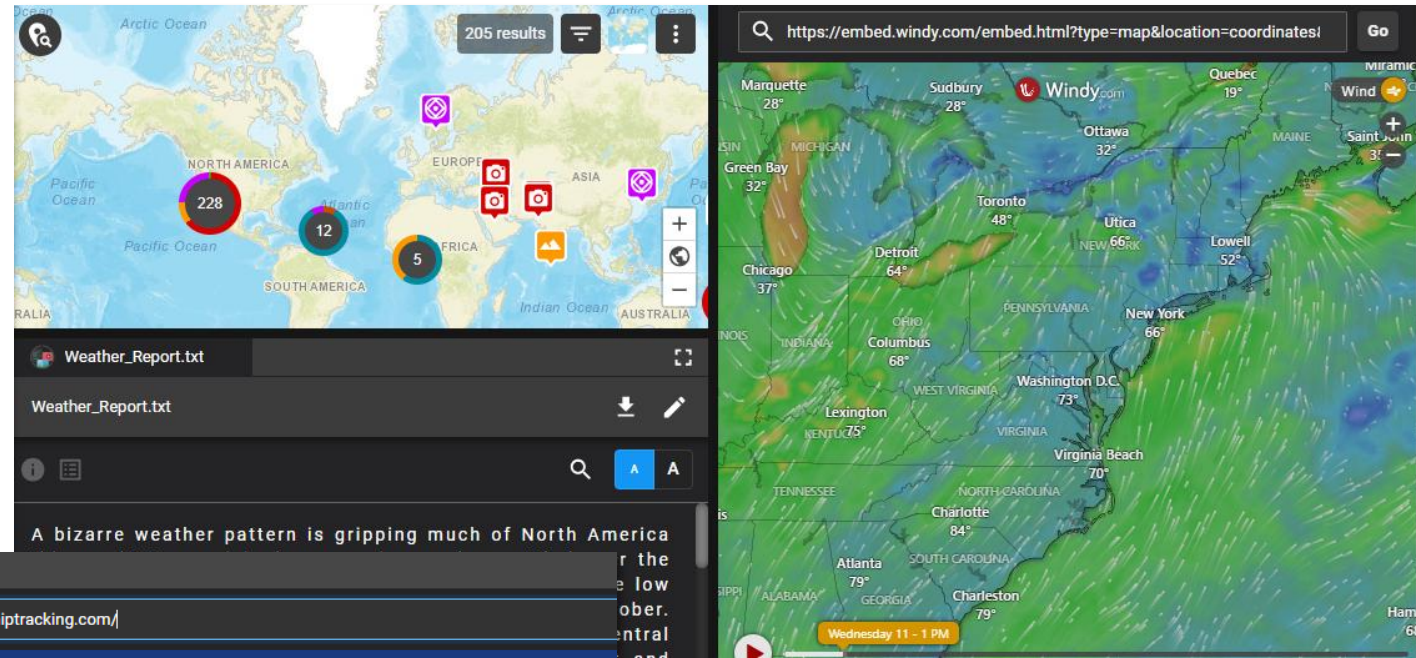
# GXP Fusion v2.6.4 updates



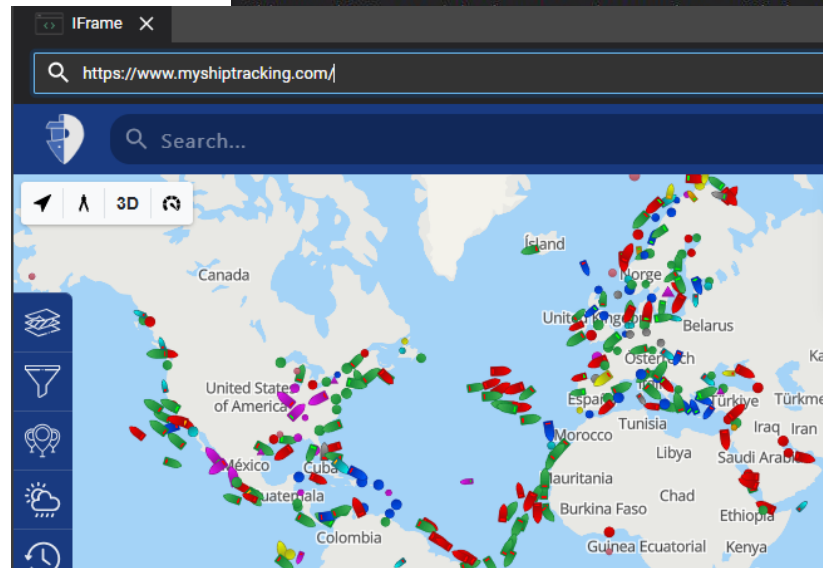
## iFrame widget

The iFrame widget provides GXP Fusion users with the ability to add web-based content to their dashboards. Examples of what could be added include:

- RFI management.
- Video feeds.
- Training content.
- Data ordering services.
- Weather info.
- AI tools.



basemap courtesy of ESRI

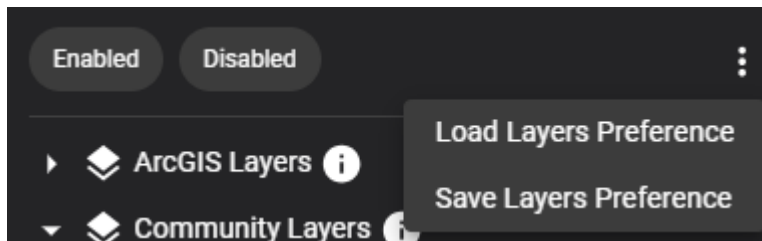


basemap courtesy of ESRI

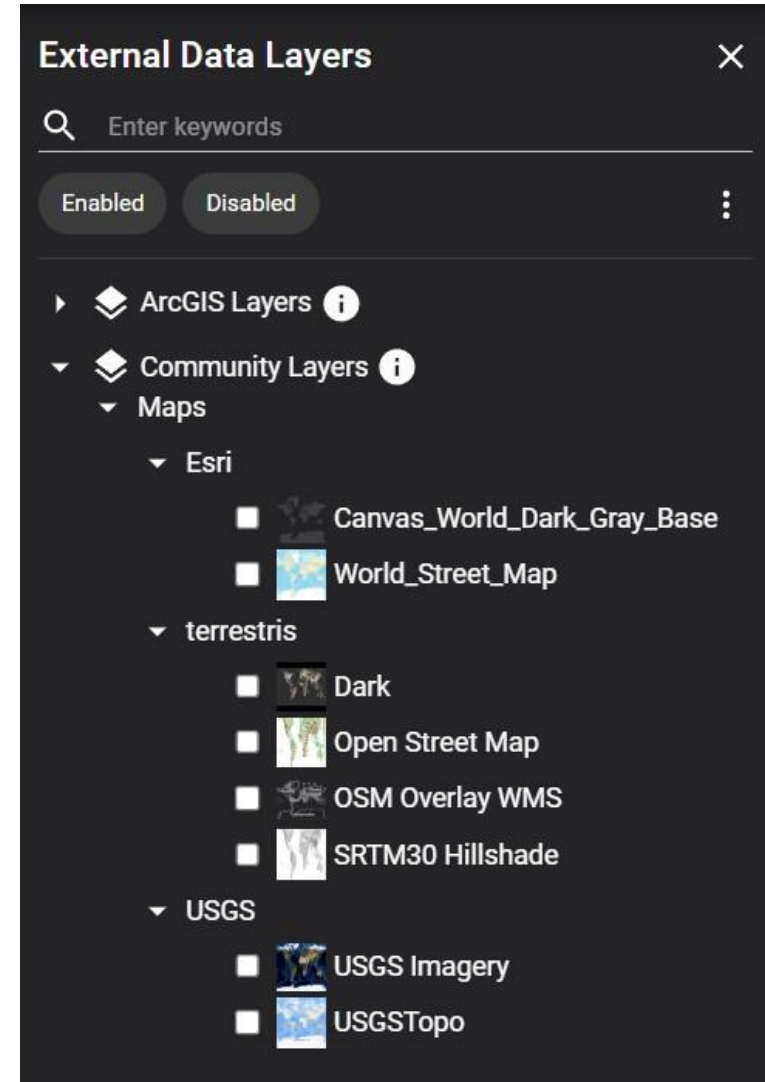
# Updated Layer Manager

The improved Layer Manager allows GXP Fusion provides several new features:

- WMS and WMTS layers added to Community Layers are now available.
- Users can save out their favorite layers as a preference for auto-loading.
- Filtering works across ArcGIS Layers and Community Layers.



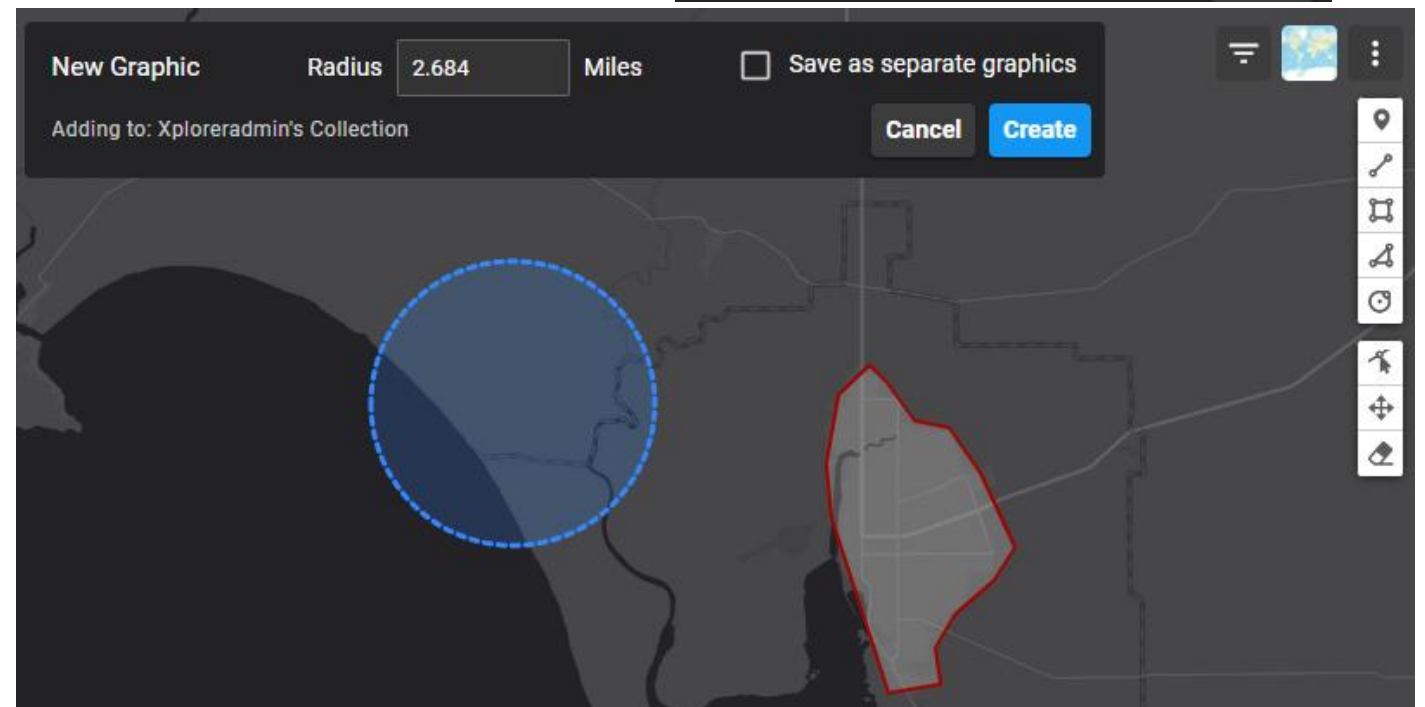
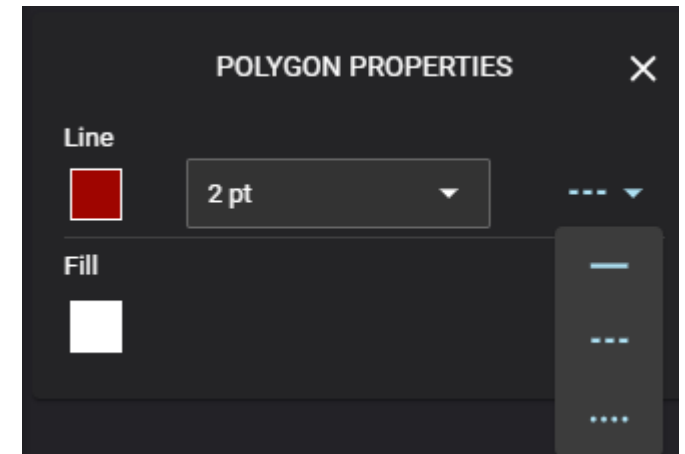
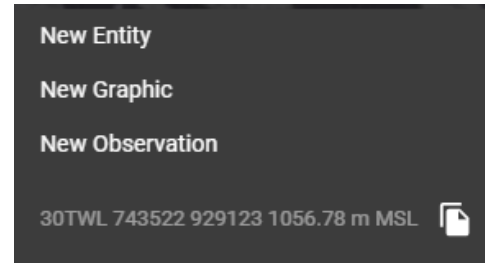
Saving preferences



## Graphics

Create graphics directly on GXP Fusion's Data Feed Map.

- New Graphic option available in the right mouse menu.
- Users can generate graphics as points, lines, rectangles, polygons, and circles (with defined radius).
- Drawn graphics can have Line and Fill edited.

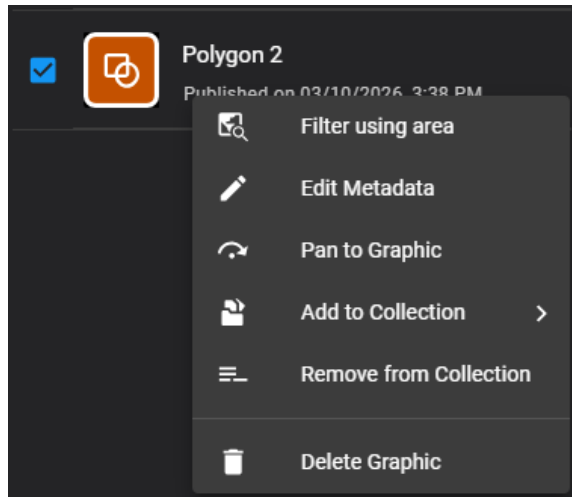


basemap courtesy of ESRI

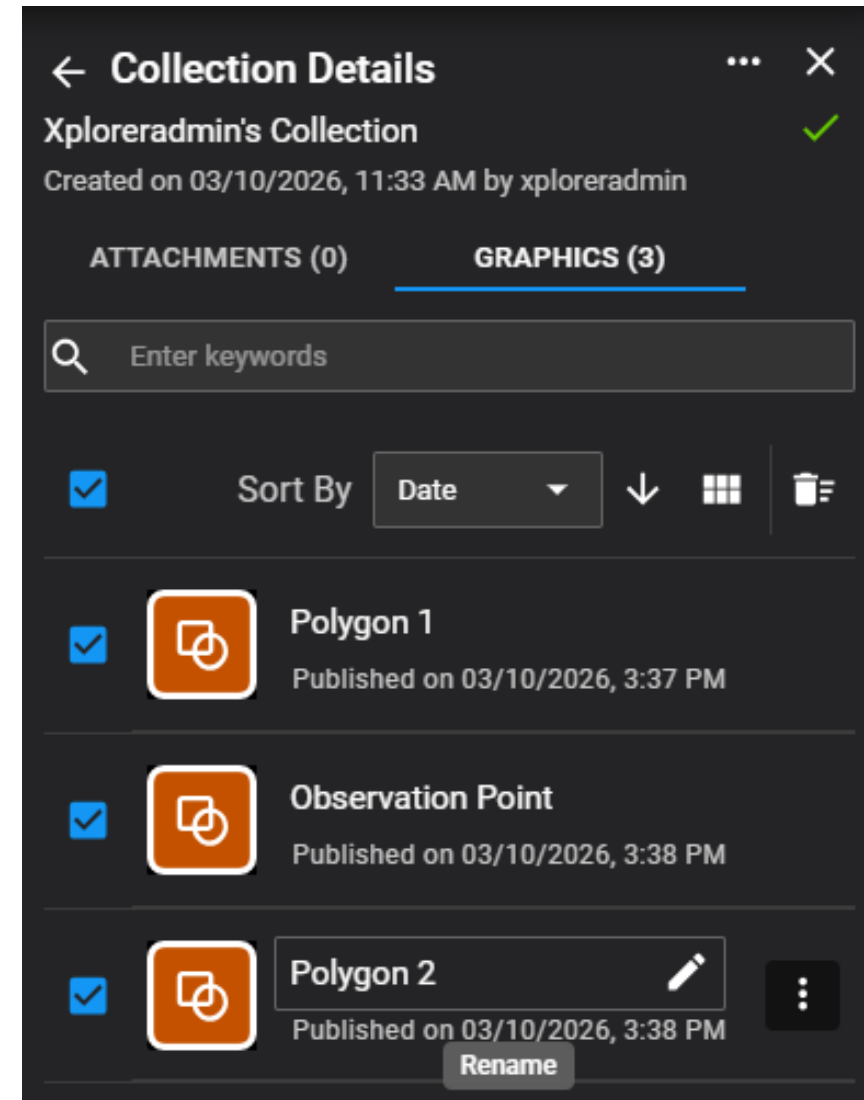
## Graphics... 2

Graphics are stored in Collections.

- Graphics layers can be renamed.
- Users can take actions on each graphic.



Graphic Collections Actions



Thank you